



ROAM - STARTER GUIDE

INTRODUCTION

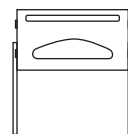
Take this Black Earth product anywhere and set it up in seconds!

With 200 square inches of cooking surface it's large enough for the family. The Black Earth porcelain coated cast iron grill gives you a high quality cooking experience. Optionally, you can swap it out with our cast iron griddle plate for pancakes, bacon, eggs or smash burgers.

The ROAM grill packs down to 21" x 12" x 3" size and weighs 16 lbs. It is built out of powder-coated aluminum.

SAFETY

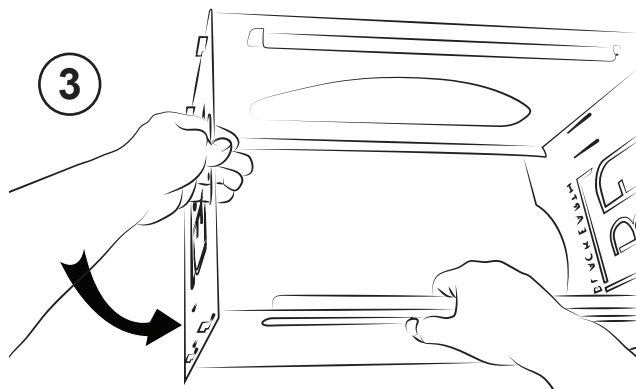
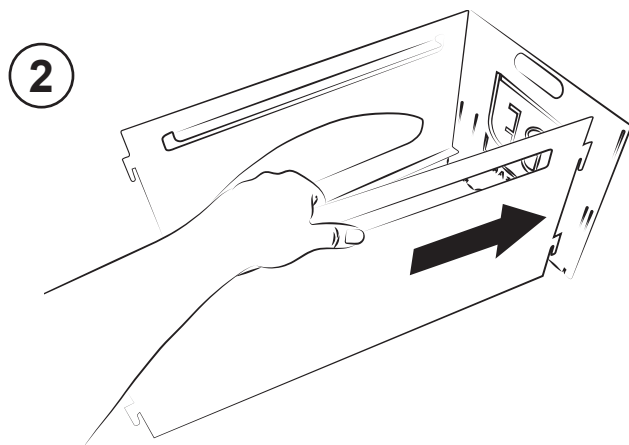
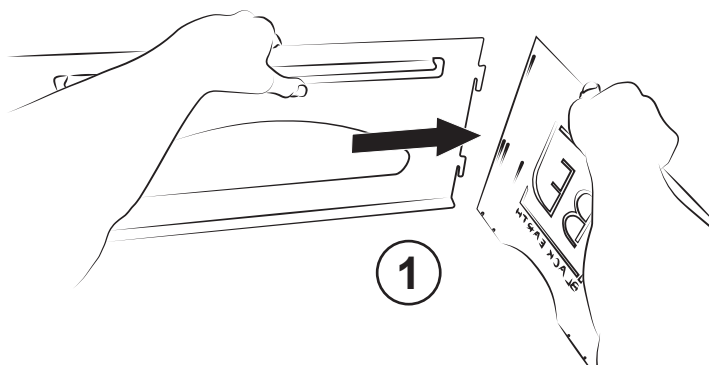
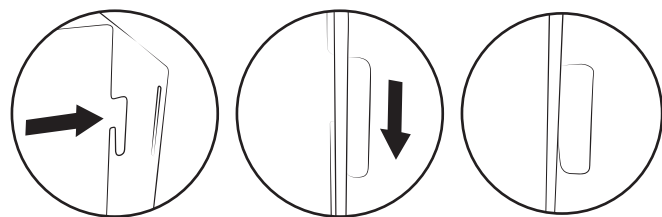
- The appliance must be located away from combustible structures by at least 1m / 3ft from each side while in use.
- This appliance is for **OUTDOOR USE ONLY**, DO NOT operate in garage, shed, balcony or other such enclosed areas.
- Keep the area surrounding the appliance free of combustible materials, gasoline, and all flammable liquids and vapors.
- Never use gasoline, kerosene, charcoal lighter fluid, or similar liquids to start or 'freshen up' a fire in this appliance.
- Do not burn painted, treated or coated wood
- Do not operate this appliance under any overhead roof construction or foliage
- Special care must be taken to keep small children away from heated surfaces
- Never leave a fire unattended



MIN 3ft (1m)

MINIMUM CLEARANCE OF UNIT TO
COMBUSTIBLE CONSTRUCTION

ASSEMBLY

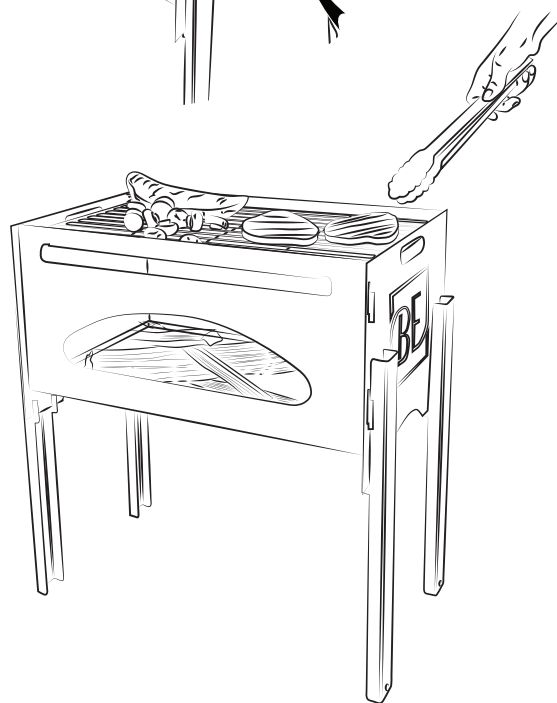
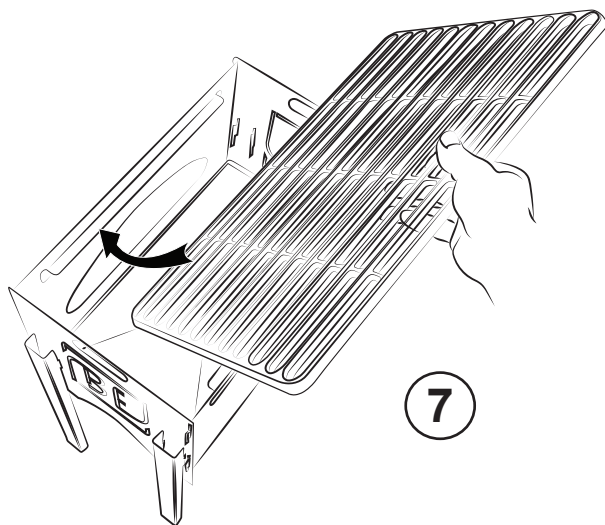
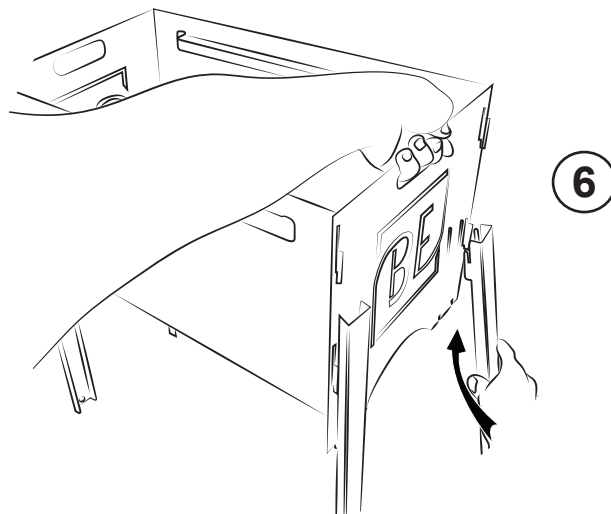
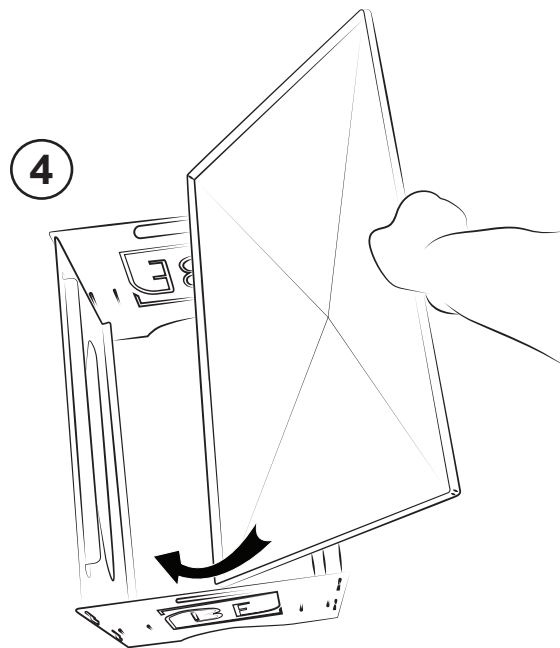
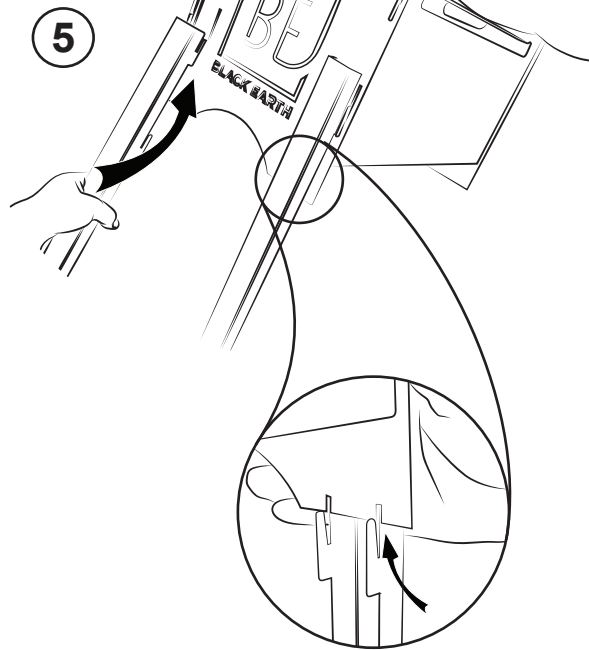


Made in Canada
PATENT US9,814,354B2

For more information contact:

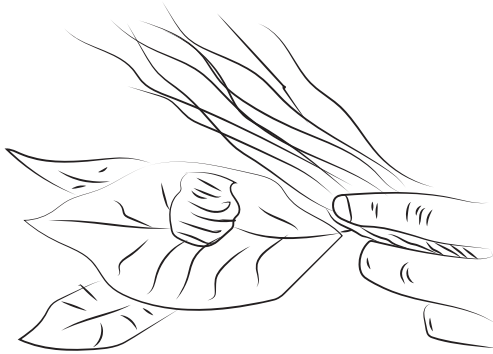
BLACK EARTH SUPPORT / 1.855.234.1373/ www.blackearthgrills.com

MANUFACTURED BY CRYSTAL SPRING HOG EQUIPMENT, STE.AGATHE, MB, CANADA



HOW TO BUILD A FIREPIT FIRE

1



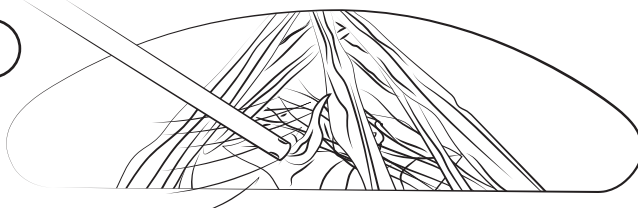
Gather tinder (e.g. dry leaves, pine needles, crumpled paper balls)

2



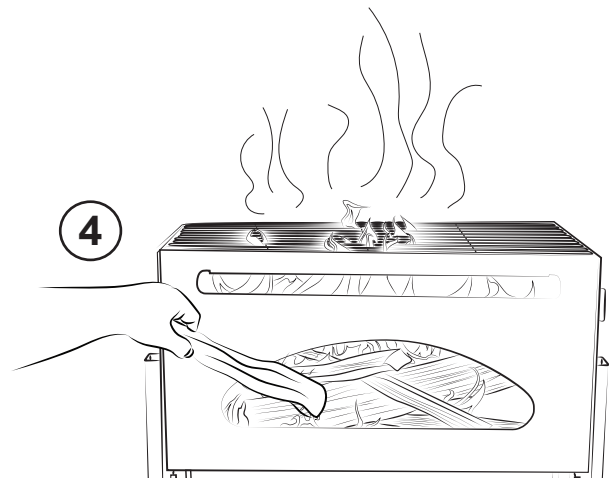
Stack some kindling (twigs, sticks, small branches) on top of the tinder in the firepit leaving gaps for air

3



Use a grill lighter or a long stick match to light the tinder from and gently blow air

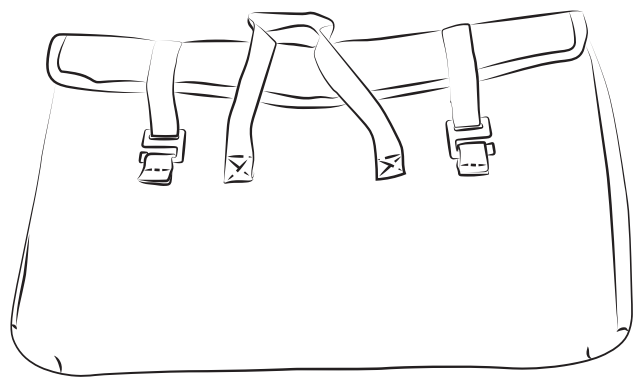
4



As the fire grows, feed it branches and eventually firewood (thinner pieces of wood are recommended for this unit)

Extinguish the fire by letting most of the wood burn out then spread the ashes to let the ashes cool down. Once the ashes have cooled, slowly pour some water to put out any remaining embers. Allow the grill to fully cool before disassembling.

Use the provided tool to lift the grill out of the Roam when the grill is hot or otherwise needed



A carrying bag for this grill can be purchased directly online at www.blackearthgrills.com or from your grill dealer



CAUTION!
WALLS HOT WHILE
IN OPERATION