



# CAPELLA 26

DIRECT VENT GAS FIREPLACE INSERT

**Unit Illustrated:** IDV26NE2 Direct Vent Insert – Natural Gas, MQLOGF26 Fiber Split Oak Log Set, I26CV1BL Clean View Front – Black, I26S1BL Surround Black, IDV26RL Refractory Brick Liner.

 **marquis**  
COLLECTION



## CAPELLA 26

Model	Fuel	Gas Control	Input Max.	Input Min.	FE (P.4.1-15)
IDV26N	Natural	Millivolt	30,000 BTU	21,000 BTU	65.25%
IDV26NE2/NE	Propane	IPI	30,000 BTU	21,000 BTU	67.37%
IDV26LP	Natural	Millivolt	30,000 BTU	25,000 BTU	66.30%
IDV26LPE2/LPE	Propane	IPI	30,000 BTU	25,000 BTU	68.30%

### ACCESSORY OPTIONS

LOG SET OR ROCK SUPPORT PLATFORM OR GLASS MEDIA REQUIRED FOR EACH UNIT

#### MEDIA OPTIONS (GLASS TRAY REQUIRED)



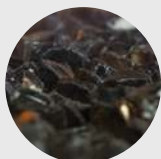
MQG5ZG  
Zircon Glacier  
Ice Glass



MQG5A  
Cobalt  
Ember Glass



MQG5B  
Black  
Ember Glass



MQEMBER  
Ember  
Chunks



MQG5C  
Bronze  
Ember Glass



MQG5W  
White  
Ember Glass



MQSTONE  
Decorative  
Stones



MQROCK2  
Natural  
Rock Set



MQROCK3  
Multi-Colored  
Rock Set

#### LOG SETS



MQLOGF26  
Fibre Split Oak



LOGF27  
Fibre Split Oak

#### LINERS



IDV26RL  
Traditional  
Brick Liner



IDV26PRL  
Porcelain  
Reflective Liner

#### TRIM OPTION

Black

Transform your existing **wood burning** fireplace into an updated focal point with the **Capella insert**. Beautifully crafted, the Capella features the expansive Clean View and adapts easily to your style.

Visit [marquisfireplaces.net](http://marquisfireplaces.net) to see the latest evolution in fireplaces.





## STANDARD FEATURES

- Dual Burner with glowing embers and decorative ash bed
- Millivolt or IPI PF1 valve system allows adjustable flame control and operation during power failures
- Matchless Piezo Ignition
- Heat radiating Ceramic Glass
- On/Off Rocker switch
- Heat activated blower with variable speed control
- Proflame II Models include Remote Control – Features flame, fan, thermostat, smart thermostat (WIFI Compatibility\*): IDV26NE2, IDV26LPE2 Models only  
\* Amazon Alexa, Google Home, Smartphone
- Safety Screen Barrier

## OPTIONAL FEATURES

**Clean View Kit:** Black

**Picture Frame Clean View:** Black

**Surrounds:** Black

**Surrounds Picture Frame:** Black

**Media (Glass or Rock Support Platform Required):**  
Contemporary Rocks, Driftwood Set, Decorative Stones, Decorative Ember Glass (Glacier Ice, Cobalt Blue, Black, Bronze, White), or Ember Chunks

**Log Sets:** MQLOGF26 Fibre Split Oak or LOGF27 Fibre Split Oak

**Liners:** Porcelain Reflective Liner or Brick Refractory Liner (Traditional)

**Wall Mount Thermostat (MV/IPI PF1):**  
Standard On/Off or Programmable

**Remote Control (MV/IPI PF1):** On/Off, Thermostat, Modulating Thermostat



## MINIMUM FIREPLACE OPENING

MODEL	WIDTH	HEIGHT	DEPTH
<b>IDV26</b>	33 7/8"	21 3/8"	14 3/8"

\*Components In (CV1) 33", Components Out (CV2) 28"

## MINIMUM UNIT COVERAGE

<b>IDV26</b>	WIDTH	HEIGHT
I26CV1 (Clean View – CV1)*	34 1/2"	22"
I26CV2 (Clean View – CV2)*	41 1/2"	25 1/2"
I26CV3 (Clean View – CV3)*	34"	22"

\*Back Frame Dimension of Clean View Kit

## CLEAN VIEW AND SURROUND SIZES

<b>IDV26</b> (Clean View Three Sided)	WIDTH	HEIGHT	DEPTH
I26CV1	35 5/8"	22 3/4"	1 3/4"
I26CV2	44 5/8"	26 5/8"	1 3/4"
I26CV3	35 5/8"	22 3/4"	3 1/2"

(Clean View Picture Frame)	WIDTH	HEIGHT
I26CVPF1	35 5/8"	25 7/8"
I26CVPF2	44 7/8"	33 1/2"

(Surrounds – Three Sided)	WIDTH	HEIGHT
I26S1	42"	27 1/2"
I26SU*	47 1/2"	28 5/8"

(Surrounds – Picture Frame)	WIDTH	HEIGHT
I26SPF1	39 3/8"	29 3/4"
I26SU*	47 1/2"	35 5/8"

\*Universal Surround can be cut to size for custom application.

1. IDV26NE2 Direct Vent Insert – Natural Gas, MQLOGF26 Log Set, I26CVPF2BL Clean View Picture Frame – Black, IDV26RL Refractory Brick Liner.
2. IDV26NE2 Direct Vent Insert – Natural Gas, MQLOGF26 Log Set, I26CV3BL Clean View – Black, and IDV26RL Brick Liner.
3. IDV26NE2 Direct Vent Insert – Natural Gas, I26CV1BL Clean View – Black, MQLOGF26 Log Set, I26S1BL Surround – Black, IDV26RL Refractory Brick Liner.





**Unit Illustrated:** IDV26NE2 Direct Vent Insert – Natural Gas, I26CV1BL Clean View – Black, MQRSP8 Glass Support Platform, MQG5A Decorative Ember Glass – Cobalt Blue, IDV26PRL Porcelain Reflective Liner.



Marquis Fireplaces maintains a program of continuous testing, refinement and improvements of all its products. Some aspect of units shown here may be changed at any time without notice or obligation.

Certification: Units are certified for Canada/USA as a Vented Gas Fireplace Heater ANSI Z21.88-2014, CSA 2.33-2014, CGA 2.17-M91 (R2009).

Note: Components may have to be ordered separately to create a complete unit. Discuss with your local Marquis Dealer for clarification.



**FOR CALIFORNIA RESIDENTS ONLY:**

**WARNING!** This product can expose you to chemicals including Carbon Monoxide, that is an externally vented by-product of fuel consumption, which is [are] known to the State of California to cause birth defects or other reproductive harm. For more information, visit [www.P65Warnings.ca.gov](http://www.P65Warnings.ca.gov).

Crafted entirely in Canada, each Marquis fireplace is built to the highest standards and made to last.



**LIMITED LIFETIME WARRANTY**

2340 Logan Avenue  
Winnipeg, Manitoba, CAN  
R2R 2V3  
Phone: 204.632.1962  
Fax: 204.632.1960  
[marquisfireplaces.net](http://marquisfireplaces.net)

Printed in Canada  
B075 – 09/20

Canada

**ENERGUIDE**

Look for the **EnerGuide**  
Gas Fireplace Energy  
Efficiency Rating in this brochure

Based on CSA P.4.1-15

