



EXTRAORDINARY STYLE IS NOW WITHIN SIGHT

FIREPLACES

BENTLEY 39/42	1.1
BENTLEY 48	1.7
COVE	1.13
SERENE	1.17
SKYLINE	1.25
SOLACE	1.29
SOLARA II	1.33

FREE STANDING STOVES

VANTAGE	2.1
SENTINEL	2.5
TITAN	2.7

INSERTS

CAPELLA 26	3.1
CAPRI 34/44	3.5

MULTI-SIDED FIREPLACES

GEMINI	4.1
INFINITE	4.5
ATRIUM	4.9
BENTLEY ST	4.13
ENCLAVE	4.19

OUTDOOR LIVING

AURORA	5.1
BOLA	5.5

Make a welcoming statement in your home with the warmth and evolutionary style of the Marquis Collection. From classic and clean to modern and sleek, you'll love the endless possibilities you can create!

Crafted entirely in Canada, each Marquis fireplace is built to the highest standards and made to last.

COVER IMAGE: Unit Illustrated: ZCVRB60N Zero Clearance Direct Vent Gas Fireplace (Natural Gas), MQSTONE Decorative Stones, ZCVRB60PL Porcelain Liners. (Shown with Vented Chase Option – VL60EG Front Enclose Grill)

RIGHT: FDV200SN Free Standing Stove (Natural Gas), LOGC200 Log Set (Cast Split Oak with glowing embers), FDV200RL Refractory Brick Liner.



MARQUIS COLLECTION





FIREPLACES



BENTLEY 39/42

ZERO CLEARANCE DIRECT VENT GAS FIREPLACE



Unit Illustrated: Model ZCV39NH Zero Clearance Direct Vent Gas Fireplace Natural Gas, MOLOGF9 Log Set (10 Piece), ZCV39RLH Refractory Brick Liner (3 Piece, Herringbone Brick), MQ39DD2BL Designer Door (Series 2) Black c/w Safety Screen.

BRING THE BIG VIEW INDOORS.

With an expansive glass viewing area and clever designer options for customizing the look to suit your personal style, the **BENTLEY** is generating some serious attention.

Available in a range of sizes and styles, you can choose from our mid efficient rated fireplace for ambiance and taking the chill out of the room, or higher efficient version for additional warmth.

With so much style and attention to detail, it's no wonder people are focused on the view indoors!

STANDARD FEATURES

- Dedicated Clean View appliance
- Millivolt or IPI valve system allows operation during a power failure with Hi/Low heat and flame adjustment
- Pan burner with Realistic Flame Pattern
- Safety Screen Barrier
- Proflame II (PF2) Models[†] include Remote Control: features flame, fan, thermostat, smart thermostat



OPTIONAL FEATURES

Fan Kit:

Heat activated with variable speed control

Designer Doors:

Arch, Straight Black (2 options)

Surrounds:

Hearth Mount, Picture Frame, Slim Line Picture Frame

Liners:

Porcelain Reflective, Fluted, or Bricks

Media Options:

Contemporary Rocks (2 options), Driftwood Set (2 options), Decorative Stones, Decorative Ember Glass (Glacier Ice, Cobalt Blue, Black, Bronze, White), Ember Chunks or Multi-Colored Cannonballs.

Log Sets:

Choose between Oak log sets, or driftwood log set.

Accent Lighting:

for use with the Glass Tray
(Dealer Installed Item)

Remotes Controls (Millivolt or IPI PF1):

Thermostat on/off, Thermostat on/off modulating, Thermostat on/off modulating and fan control

Thermostats:

Wall Mount or Programmable



BENTLEY 39 PRODUCT SPECIFICATIONS

MODEL	ZCV39N	ZCV39LP	ZCV39NH	ZCV39LPH
	ZCV39NE	ZCV39LPE	ZCV39NHE	ZCV39LPHE
	ZCV39NE2 [†]	ZCV39LPE2 [†]	ZCV39NHE2 [†]	ZCV39LPHE2 [†]
Fuel	Natural Gas	Propane	Natural Gas	Propane
Gas Control	Millivolt / IPI	Millivolt / IPI	Millivolt / IPI	Millivolt / IPI
Input Max.	25,000 BTU	25,000 BTU	28,000 BTU	29,000 BTU
Input Min.	16,750 BTU	20,000 BTU	19,000 BTU	23,000 BTU
FE (P.4.1-15)	52.35% / 52.24%	52.35% / 54.24%	63.81% / 66.17%	66.82% / 68.65%
Glass Size	33"W x 28 5/8"H	33"W x 28 5/8"H	33"W x 28 5/8"H	33"W x 28 5/8"H
Venting	4"/7" Flex or 4" x 6 5/8" Hard Pipe* or Power Vent	4"/7" Flex or 4" x 6 5/8" Hard Pipe* or Power Vent	4"/7" Flex or 4" x 6 5/8" Hard Pipe* or Power Vent	4"/7" Flex or 4" x 6 5/8" Hard Pipe* or Power Vent

**Approved with Kingsman Flex Vent, MG DuraVent-Direct Vent Pro Direct Vent System, Amerivent Direct Vent Pipe System, Selkirk Direct-Temp Venting, ICC Excel Direct Vent, BDM Pro-Form Direct Vent and Metal Fab Sure-Seal DV Pipe System. This appliance is approved with Kingsman (PVH58) Horizontal Power Vent Termination.*



ZCV39N, MLOGF9 Log Set (10 Piece), ZCV39RLS Refractory Fiber Brick Liner (Stacked Brick), MQ39DD2BL Designer Door (Series 2, Black).



ZCV39N, MLOGF9 Log Set (10 Piece), ZCV39RLT Refractory Fiber Brick Liner (Traditional Brick), MQ39DD3BL Designer Door (Series 3, Black)



ZCV39N, LOGF3 Log Set (5 Piece), ZCV39RLH Refractory Fiber Brick Liner (Herringbone Brick), MQ39DD1BL Designer Door (Series 1, Black).



ZCV39N, ZCV39GT Glass Tray, MQSTONE Decorative Stones, ZCV39PL Porcelain Reflective Panel Liner.



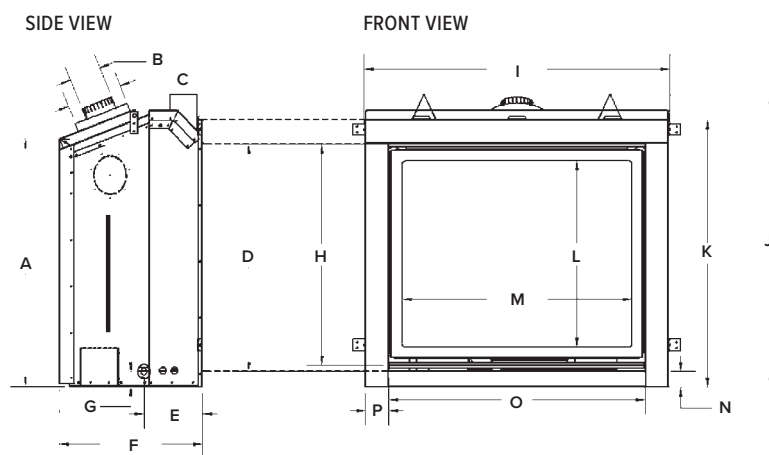
ZCV39N, MLOGF9 Log Set (10 Piece), ZCV39PL Porcelain Reflective Liner.



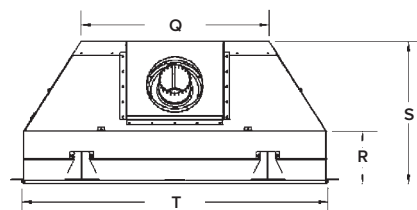
ZCV39N, ZCV39GT Glass Tray, MQROCK3 Contemporary Rock Collection (Multi-Colored), ZCV39PL Porcelain Reflective Panel Liner.

Unit Illustrated: Model ZCV39NH Zero Clearance Direct Vent Gas Fireplace Natural Gas, ZCV39GT Glass Tray, MQG5ZG Glass Media (ZIRCON Glacier Ice, 5 lbs. x3 Bags), ULK2 Universal Light Kit (2 Lamps), ZCV39PL Porcelain Reflective Panel Liner, ZCV39S2PFBL Surround (Picture Frame 1-5/8" Wide).

BENTLEY 39/42 PRODUCT DIMENSIONS



	ZCV39	ZCV42
A	32"	35 1/8"
B	4"	4"
C	7"	7"
D	29 3/8"	32 1/2"
E	7 1/2"	7 9/16"
F	18 3/8"	18 7/16"
G	1 15/16"	1 15/16"
H	28 9/16"	31 11/16"
I	39 3/8"	42 7/16"
J	37 11/16"	40 13/16"
K	34 1/2"	37 5/8"
L	24 1/16"	27 3/16"
M	29 5/8"	33 11/16"
N	2"	2"
O	33"	37 1/16"
P	3"	2 1/2"
Q	24 1/4"	27 7/8"
R	18 7/16"	18 7/16"
S	6 7/8"	6 7/8"
T	39 3/8"	42 7/16"



TOP VIEW

FRAMING DIMENSIONS

	ZCV39	ZCV42
HEIGHT		
Actual	37 3/4"	40 7/8"
Framing	37 7/8"	41"
FRONT WIDTH		
Actual	39 3/8"	42 3/8"
Framing	39 1/2"	42 1/2"
DEPTH		
Actual	18 3/8"	18 3/8"
Framing	18 1/2"***	18 1/2"***

***Dependent of finishing material used

SURROUNDS

	HEARTH MOUNT (4" WIDE)	PICTURE FRAME (4" WIDE)	PICTURE FRAME (1 5/8" WIDE)
ZCV39	40 5/8"W x 35"H	40 5/8"W x 37"H	36 1/8"W x 32 1/2"H
ZCV42	44 5/8"W x 38 1/8"H	44 5/8"W x 40 1/8"H	40 1/8"W x 35 5/8"H

BENTLEY 42 PRODUCT SPECIFICATIONS

MODEL	ZCV42N ZCV42NE ZCV42NE2†	ZCV42LP ZCV42LPE ZCV42LPE2†	ZCV42NH ZCV42NHE ZCV42NHE2†	ZCV42LPH ZCV42LPHE ZCV42LPHE2†
Fuel	Natural Gas	Propane	Natural Gas	Propane
Gas Control	Millivolt / IPI	Millivolt / IPI	Millivolt / IPI	Millivolt / IPI
Input Max.	25,000 BTU	25,000 BTU	29,500 BTU	29,000 BTU
Input Min.	16,500 BTU	19,500 BTU	20,000 BTU	23,000 BTU
FE (P.4.1-15)	52.86% / 54.95%	52.86% / 54.95%	64.53% / 66.48%	66.65% / 68.77%
Glass Size	37 1/8"W x 31 3/4"H	37 1/8"W x 31 3/4"H	37 1/8"W x 31 3/4"H	37 1/8"W x 31 3/4"H
Venting	4"/7" Flex or 4" x 6 5/8" Hard Pipe* or Power Vent	4"/7" Flex or 4" x 6 5/8" Hard Pipe* or Power Vent	4"/7" Flex or 4" x 6 5/8" Hard Pipe* or Power Vent	4"/7" Flex or 4" x 6 5/8" Hard Pipe* or Power Vent

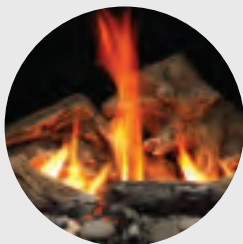
*Approved with Kingsman Flex Vent, MG DuraVent-Direct Vent Pro Direct Vent System, Amerivent Direct Vent Pipe System, Selkirk Direct-Temp Venting, ICC Excel Direct Vent, BDM Pro-Form Direct Vent and Metal Fab Sure-Seal DV Pipe System. This appliance is approved with Kingsman (PVH58) Horizontal Power Vent Termination.

ZCV42N, MQ42D Driftwood Log Set, ZCV42GT Glass Tray, ZCV42PL Porcelain Reflective Panel Liner, ZCV42S1BL Surround (Hearth Mount 4" Wide).

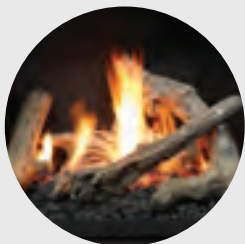


BENTLEY 39/42 ACCESSORIES

LOG SETS



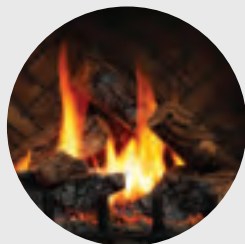
MQ39D
(4-Piece)
Driftwood Log Set
(Glass Tray Required)



MQ42D
(6-Piece)
Driftwood Log Set
(Glass Tray Required)



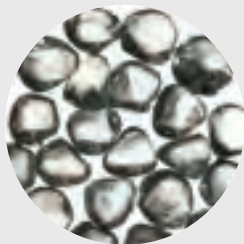
MQLOGF9
(10-Piece)
Split Oak Log Set



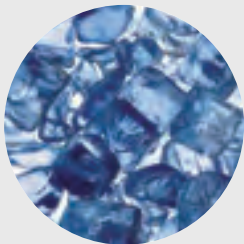
LOGF3
(5-Piece)
Split Oak Log Set

MEDIA OPTIONS

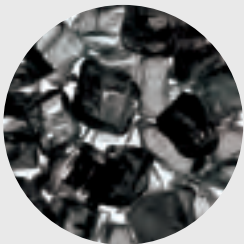
GLASS TRAY REQUIRED



MQG5ZG
Zircon Glacier
Ice Glass



MQG5A
Cobalt
Ember Glass



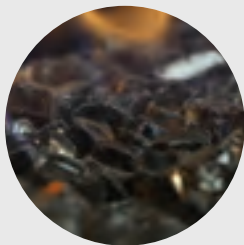
MQG5B
Black
Ember Glass



MQG5C
Bronze
Ember Glass



MQG5W
White
Ember Glass



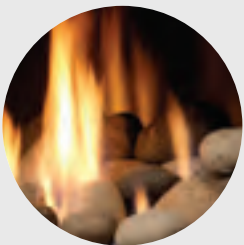
MQEMBER
Ember
Chunks



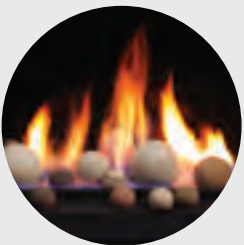
MQSTONE
Decorative
Stones



MQROCK2
Natural
Rock Set

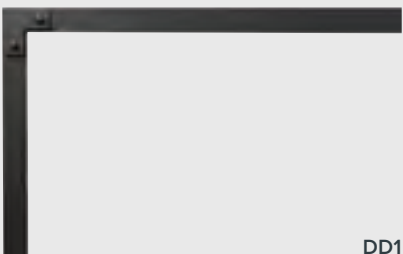


MQROCK3
Multi-Colored
Rock Set



RBCB1
Multi-Colored
Cannonballs

DESIGNER DOORS



DD1

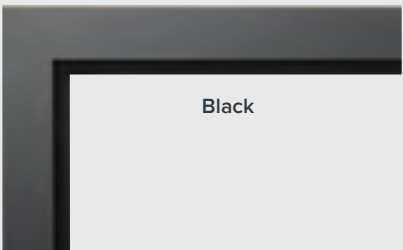


DD2



DD3

WALL SURROUND



Black

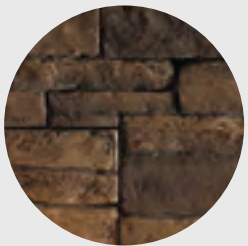
LINERS



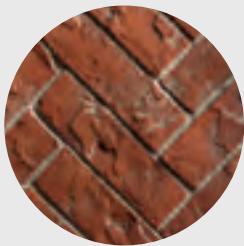
Traditional
Brick



Herringbone
Brick



Stacked
Brick Liner



Red
Herringbone
Brick Liner



Fluted



Porcelain
Reflective



Unit Illustrated: Model ZCV39NH Zero Clearance Direct Vent Gas Fireplace Natural Gas, ZCV39GT Glass Tray, MQ39D Driftwood Log Set (4 Piece), MQSTONE Decorative Stones, VLBIT6 Log Bits (Small, 6 Piece Kit), ZCV39PL Porcelain Reflective Panel Liner, ZCV39S1PFBL Surround (Picture Frame 4" Wide).

BENTLEY 48

ZERO CLEARANCE DIRECT VENT GAS FIREPLACE



Unit Illustrated: MQZCV48NE2 Zero Clearance Direct Vent Natural Gas Fireplace, MQLOGF48B Burnt Oak Log Set, ZCV48RLH Herringbone Brick Liner.

GO BIG.

When the view is this big, it must be the **BENTLEY 48**. This big brother of the popular Bentley is getting some serious attention and lots of second looks from home owners wanting to enjoy a statement fireplace.

An expansive glass viewing area and beautiful designer options allow you to customize the look to your own style. Take the chill out of the room with this heater-rated fireplace, and bask in some serious warmth.

Wow – we made you look, didn't we?

STANDARD FEATURES

- Dedicated Clean View appliance
- Millivolt or IPI valve system allows operation during a power failure with Hi/Low heat and flame adjustment
- Pan burner with Realistic Flame Pattern
- Safety Screen Barrier
- Proflame II (PF2) Models[†] include Remote Control: features flame, fan, thermostat, smart thermostat. Bentley 48 (P2) models include accent lighting.



OPTIONAL FEATURES

Fan Kit:

Heat activated with variable speed control

Designer Doors:

Arch, Straight Black (2 options)

Surrounds:

Hearth Mount, Picture Frame, Slim Line Picture Frame

Liners:

Porcelain Reflective, Fluted, or Bricks

Media Options:

Contemporary Rocks (2 options), Driftwood Set (2 options), Decorative Stones, Decorative Ember Glass (Glacier Ice, Cobalt Blue, Black, Bronze, White), Ember Chunks or Multi-Colored Cannonballs.

Log Sets:

Choose between two Oak Log Sets, or Driftwood Log Set.

Accent Lighting:

for Millivolt or IPI PF1 Models
(Dealer Installed Item)

Remotes Controls (Millivolt or IPI PF1):

Thermostat on/off, Thermostat on/off modulating, Thermostat on/off modulating and fan control

Thermostats:

Wall Mount or Programmable

Unit Illustrated: MQZCV48NE2 Zero Clearance Direct Vent Natural Gas Fireplace, MQLOGF48D Driftwood Log Set, MQZCV48GT Glass Tray, MQSTONE10 Decorative Stone (10 Piece Set), MQZCV48RLF Fluted Brick Liner.

BENTLEY 48 PRODUCT SPECIFICATIONS

MODEL	MQZCV48N	MQZCV48LP	MQZCV48NE MQZCV48NE2	MQZCV48LPE MQZCV48LPE2
Fuel	Natural Gas	Propane	Natural Gas	Propane
Gas Control	Millivolt	Millivolt	IPI	IPI
Input Max.	42,500 BTU	42,250 BTU	42,500 BTU	42,250 BTU
Input Min.	28,500 BTU	34,000 BTU	28,500 BTU	34,000 BTU
FE (P.4.1-15)	52.24%	54.52%	53.37%	55.71%
Glass Size	41 1/2"W x 34 7/16"H	41 1/2"W x 34 7/16"H	41 1/2"W x 34 7/16"H	41 1/2"W x 34 7/16"H
Venting	5/8" Hard Pipe* or Power Vent	5/8" Hard Pipe* or Power Vent	5/8" Hard Pipe* or Power Vent	5/8" Hard Pipe* or Power Vent

**Approved with Kingsman Flex Vent, MG DuraVent-Direct Vent Pro Direct Vent System, Amerivent Direct Vent Pipe System, Selkirk Direct-Temp Venting, ICC Excel Direct Vent, BDM Pro-Form Direct Vent and Metal Fab Sure-Seal DV Pipe System. This appliance is approved with Kingsman (PVH58) Horizontal Power Vent Termination.*



MQZCV48NE2 Zero Clearance Direct Vent Natural Gas Fireplace, MQLOGF48B Burnt Oak Log Set, ZCV48RLH Herringbone Brick Liner, and MQ48DD1BL Designer Door (Series 1).



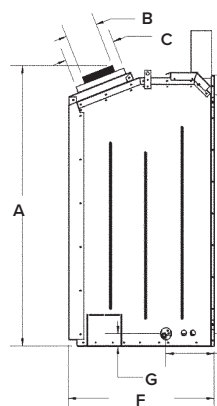
MQZCV48NE2 Zero Clearance Direct Vent Natural Gas Fireplace, MQLOGF48 Oak Log Set, ZCV48RLS Stacked Brick Liner, and MQ48DD3BL Designer Arch Door (Series 3).



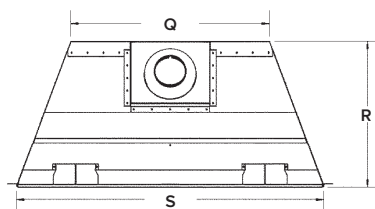
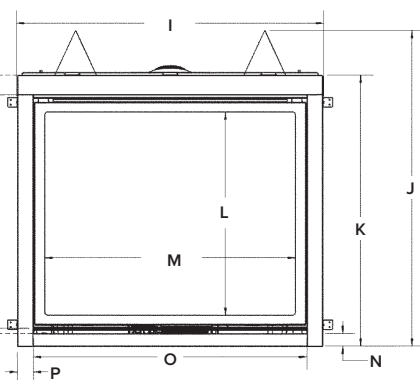
MQZCV48NE2 Zero Clearance Direct Vent Natural Gas Fireplace, MQLOGF48 Oak Log Set, ZCV48RLT Traditional Brick Liner, and MQ48DD2BL Designer Door (Series 2).

BENTLEY 48 PRODUCT DIMENSIONS

SIDE VIEW



FRONT VIEW



TOP VIEW

ZCV48

A	44 1/8"
B	5"
C	8"
D	37 1/16"
E	7 5/8"
F	22 15/16"
G	1 15/16"
H	36 3/4"
I	48 3/8"
J	49 11/16"
K	42 11/16"
L	32"
M	39 7/16"
N	2"
O	43"
P	2 1/2"
Q	31 5/16"
R	23"
S	48 3/8"

FRAMING DIMENSIONS

ZCV48

HEIGHT

Actual	49 11/16"
Framing	49 3/4"

FRONT WIDTH

Actual	48 3/8"
Framing	48 1/2"

DEPTH

Actual	22 15/16"
Framing	24 9/16"***

***Dependent of finishing material used

SURROUNDS

HEARTH MOUNT (4" WIDE)

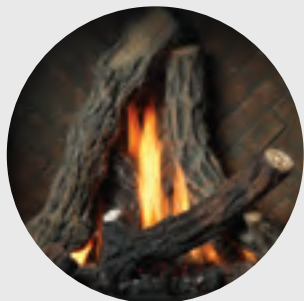
ZCV48	50 9/16"W x 43 3/16"H
--------------	-----------------------

Unit Illustrated:
MQZCV48NE2 Zero Clearance
Direct Vent Natural Gas
Fireplace, MOLOGF48 Oak
Log Set, ZCV48RLT Traditional
Brick Liner, and MQ48DD2BL
Designer Door (Series 2).



BENTLEY 48 ACCESSORIES

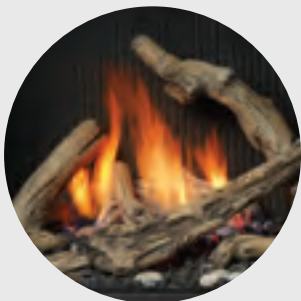
LOG SETS



MQLOGF48
Split Oak Log Set



MQLOGF48B
Burnt Oak Log Set



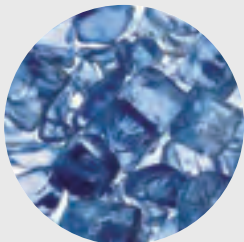
MQLOGF48D
Driftwood Log Set
(Glass Tray Required)

MEDIA OPTIONS

GLASS TRAY REQUIRED



MQG5ZG
Zircon Glacier
Ice Glass



MQG5A
Cobalt
Ember Glass



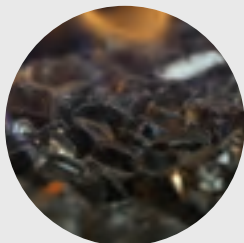
MQG5B
Black
Ember Glass



MQG5C
Bronze
Ember Glass



MQG5W
White
Ember Glass



MQEMBER
Ember
Chunks



MQSTONE
Decorative
Stones



MQROCK2
Natural
Rock Set

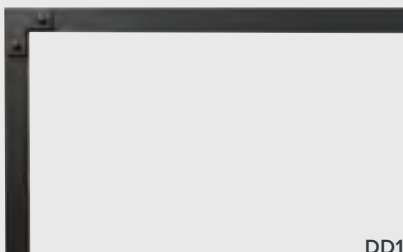


MQROCK3
Multi-Colored
Rock Set



RBCB1
Multi-Colored
Cannonballs

DESIGNER DOORS



DD1

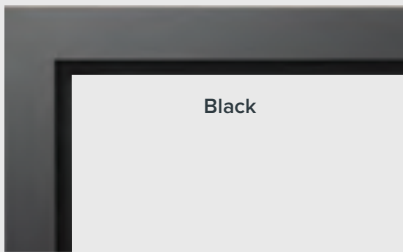


DD2



DD3

WALL SURROUND



Black

LINERS



Traditional
Brick



Herringbone
Brick



Stacked
Brick



Fluted



Porcelain
Reflective

Unit Illustrated: MQZCV48NE2 Zero Clearance Direct Vent
Natural Gas Fireplace, MQLOGF48D Driftwood Log Set,
MQZCV48GT Glass Tray, MQSTONE10 Decorative Stone
(10 Piece Set), MQZCV48RLF Fluted Brick Liner.



COVE

ZERO CLEARANCE DIRECT VENT GAS FIREPLACE



Unit Illustrated: MQZDV4634NE2 Zero Clearance Direct Vent Gas Fireplace (Natural Gas), MQRSP39BL Glass and Rock Tray Support Platform, MQG5A Decorative Ember Glass (Cobalt), MQ46PL Porcelain Reflective Liner, MQG10B Black Glass on the bottom of the fireplace.

GIVE WARMTH A WELCOME.

Grand in style and stature, the **COVE** makes a contemporary statement in any home.



Unit Illustrated: MQZDV3927NE2 Zero Clearance Direct Vent Gas Fireplace (Natural Gas), MQLOGF39 Fiber Split Oak Log Set, MQ39RLT Traditional Brick Liner.

STANDARD FEATURES

- Safety Screen Barrier
- Proflame II (PF2) Models include Remote Control; features flame, fan, thermostat, smart thermostat, accent lighting

OPTIONAL FEATURES

Log Set:

Fiber Split Oak

Glass Tray:

Contemporary Rocks (Natural or Multi-Colored), or Decorative Ember Glass (Glacier Ice, Cobalt Blue, Black, Bronze, White)

Liners:

Porcelain Panels or Brick Liners

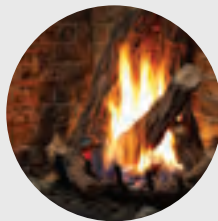


PF2



COVE ACCESSORIES

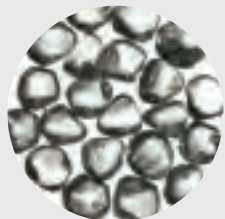
LOG SET



Fiber Split
Oak Log Set

MEDIA OPTIONS

REQUIRES GLASS AND ROCK SUPPORT PLATFORM (MQRSP39BL)



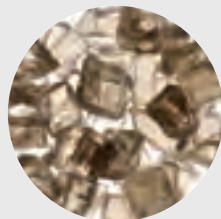
MQG5ZG
Zircon Glacier
Ice Glass



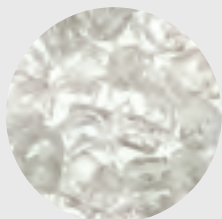
MQG5A
Cobalt
Ember Glass



MQG5B
Black
Ember Glass



MQG5C
Bronze
Ember Glass



MQG5W
White
Ember Glass

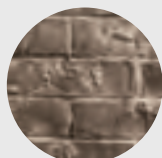


MQROCK2
Natural Rocks

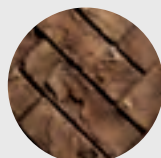


MQROCK3
Multi-Colored

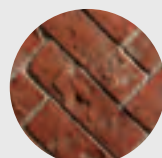
LINERS



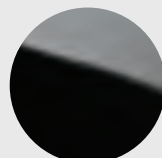
Traditional
Brick Liner



Herringbone
Brick Liner



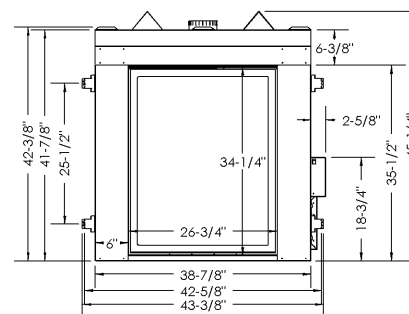
Red Herringbone
Brick Liner



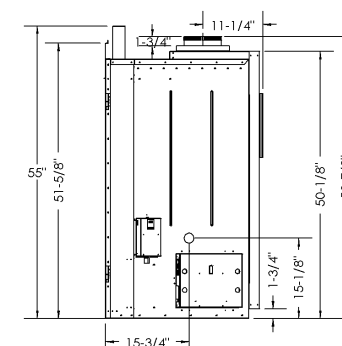
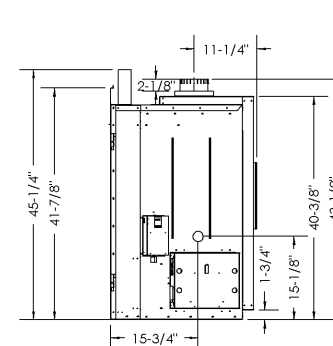
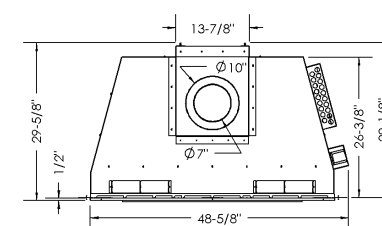
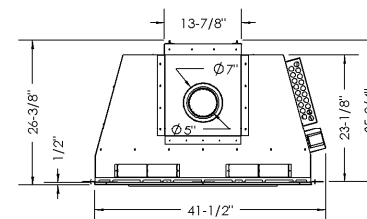
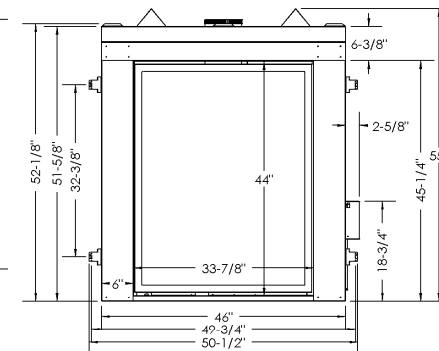
Porcelain
Reflective Liner

COVE PRODUCT DIMENSIONS

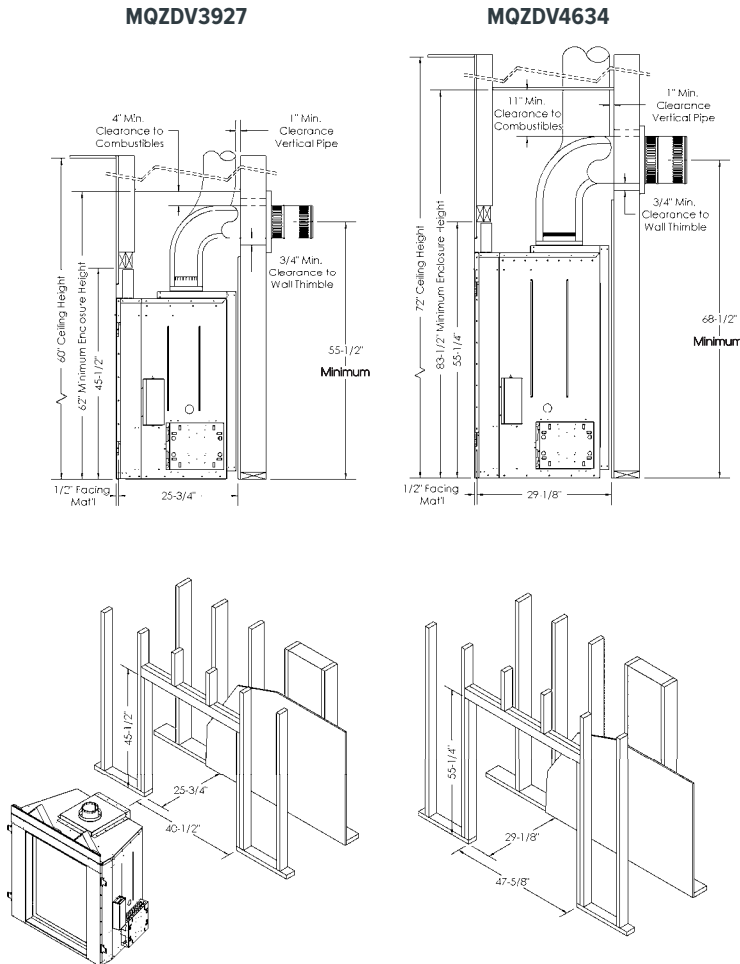
MQZDV3927



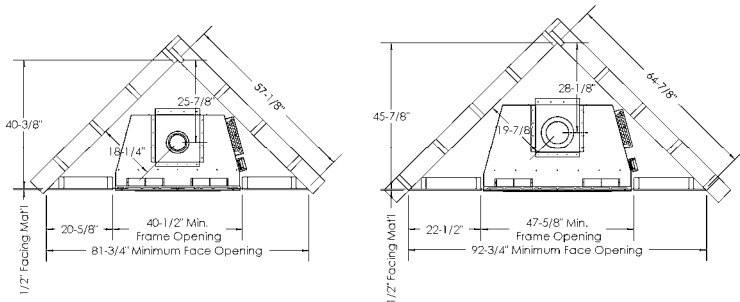
MQZDV4634



COVE FRAMING DIMENSIONS



CORNER FRAME DIMENSIONS



COVE PRODUCT SPECIFICATIONS

MODEL	MQZDV3927NE2	MQZDV3927LPE2	MQZDV4634NE2	MQZDV4634LPE2
Fuel	Natural Gas	Propane	Natural Gas	Propane
Input Max.	42,500 BTU	40,500 BTU	59,000 BTU	55,500 BTU
Input Min.	29,000 BTU	32,000 BTU	40,500 BTU	44,000 BTU
FE (P.4.1-15)	62.45%	55.50%	47.91%	38.47%
Viewing Area	26 3/4" W x 34 1/4"H	26 3/4" W x 34 1/4"H	33 7/8" W x 44"H	33 7/8" W x 44"H
Venting	5"/7" Kingsman Flex or 5"/8" with Adapter	5"/7" Kingsman Flex or 5"/8" with Adapter	7"/10" Kingsman Flex Vent	7"/10" Kingsman Flex Vent

Unit Illustrated: MQZDV4634NE2 Zero Clearance Direct Vent Gas Fireplace (Natural Gas), MQLOGF46 Fiber Split Oak Log Set, and MQ46RLT Traditional Brick Liner.



SERENE

ZERO CLEARANCE DIRECT VENT GAS FIREPLACE



Unit Illustrated: ZCVRB60N Zero Clearance Direct Vent Gas Fireplace (Natural Gas), MQSTONE Decorative Stones, ZCVRB60PL Porcelain Liners.(Shown with Vented Chase Option – VL60EG Front Enclose Grill)

A FEELING OF SERENITY.

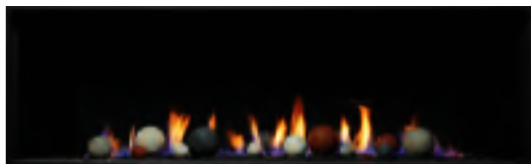
At the end of a busy day, cozy up to the new **SERENE**. With beautiful designer details and the highest quality craftsmanship, **SERENE** combines pure comfort with a wow factor that comes from your choice of rocks and driftwood, decorative stones, cannonballs or ember glass. Relax and unwind the **SERENE** way.



ZCVRB47N Zero Clearance Direct Vent Gas Fireplace (Natural Gas), MQEMBER Ember Chunks, MQZCVRB47RLF Fluted Liners.



ZCVRB60N Zero Clearance Direct Vent Gas Fireplace (Natural Gas), MQG5W Glass Media (White x2), ZCVRB60PL Porcelain Liners.



ZCVRB60N Zero Clearance Direct Vent Gas Fireplace (Natural Gas), RBCB1 Cannonballs, ZCVRB60PL Porcelain Liners.

STANDARD FEATURES

- Hi/Low Millivolt or IPI valve system will operate during power failures
- Bronze Glass
- Mobile Home, Bedroom and Bed Sitting Room approved
- Proflame II⁺ Models include remote control; features flame, fan, thermostat, smart-thermostat and LED lights*
- Safety Screen Barrier

**non-dimmable*

ENCLOSURE GRILL OPENING

SERENE 47 (front)	46 3/4" W x 2 5/8" H
SERENE 47 (sides)	15 1/4" W x 6 5/8" H
SERENE 60 (front)	60 5/8" W x 3 5/8" H
SERENE 60 (sides)	15 1/4" W x 6 5/8" H



OPTIONAL FEATURES

Surround:

Black or Stainless Steel

Fan Kit:

Heat activated with variable speed control

Universal Light Kit:

Two Lamps (accent lighting)

Wall Mount Thermostat:

Standard on/off or Programmable 5 day (weekday) and 2 day (weekend)

Log Sets:

3 Piece Driftwood Set (MQ46D),
4 Piece Driftwood with 4 Rocks (MQRBD1),
3 Piece Driftwood Log Set (MQRBD4),
5 Piece Driftwood Set (MQRBD3),
or 5 Piece Birch Log Set (MQRBRW)

Media Options:

Contemporary Rocks, Decorative Stones, Decorative Ember Glass (Glacier Ice, Cobalt Blue, Black, Bronze, White), Ember Chunks or Multi-Colored Cannonballs

Liners:

Porcelain Reflective, Fluted Brick (Serene 47), or Stacked Stone (Serene 60)

Remote Controls:

Thermostat on/off, Thermostat on/off modulating, Thermostat on/off modulating, fan control and lights

SERENE 47



SERENE 47 PRODUCT SPECIFICATIONS

MODEL	ZCVRB47N/NE MQZCVRB47NE2 [†]	ZCVRB47LP/LPE MQZCVRB47LPE2 [†]
Fuel	Natural Gas	Propane
Gas Control	Millivolt / IPI	Millivolt / IPI
Input Max.	24,500 BTU	24,500 BTU
Input Min.	16,500 BTU	20,500 BTU
FE (P.4.1-15)	55.26% / 57.31%	55.01% / 57.10%
Glass Size	40 5/8" W x 13 7/8" H	40 5/8" W x 13 7/8" H
Venting	4" / 7" Flex or 4" x 6 5/8" Hard Pipe	4" / 7" Flex or 4" x 6 5/8" Hard Pipe

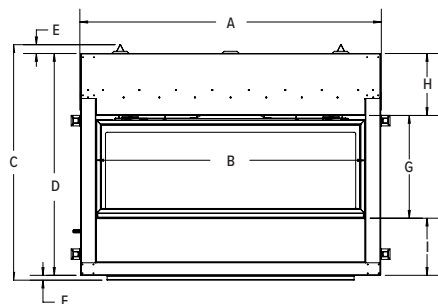
SERENE 47 VENTED CHASE OPTION

WITH OPENINGS (NO GRILLS)	Min. 105 sq/in.
Min. Enclosure Height	70"
Min. Opening Below Ceiling	1-1/4"
WITH GRILLS (MIN. AIR FREE OPENINGS)	105 sq/in.
Min. Enclosure Height	70"
Grill Opening (Max. distance from top of enclosure)	2"

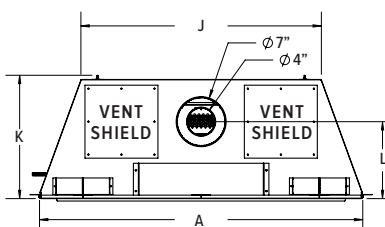
Unit Illustrated: ZCVRB47N Zero Clearance Direct Vent Gas Fireplace (Natural Gas), ZCVRB47S1SS Surround Stainless Steel, MQBRW Birch Log Set, ZCVRB47PL Porcelain Liners, and MQSTONE10 Decorative Stones.

SERENE 47 PRODUCT DIMENSIONS

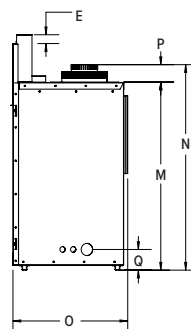
FRONT VIEW



TOP VIEW



SIDE VIEW



FIREPLACE DIMENSIONS

Width	Height	Depth
46 5/8"	38 5/8"	17 3/4"

FRAMING DIMENSIONS

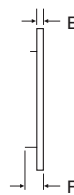
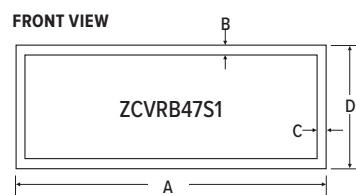
Width	Height	Depth
47"	38 3/4"	18 1/4"

*dependent of finishing material used.

A	46 5/8"
B	41 5/8"
C	38 5/8"
D	35 1/16"
E	2 1/4"
F	3/4"
G	15 7/8"
H	11"
I	8 13/16"
J	34 5/8"
K	17 3/4"
L	11 1/16"
M	29 1/16"
N	31 11/16"
O	17 3/4"
P	2 1/16"
Q	3 3/16"

OPTIONAL WALL SURROUND

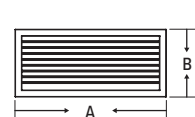
FRONT VIEW



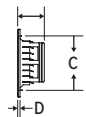
A	44 5/8"
B	1 1/2"
C	1 1/2"
D	17 3/4"
E	1"
F	1 3/4"

OPTIONAL SIDE GRILL - VL60EGS

FRONT VIEW



SIDE VIEW



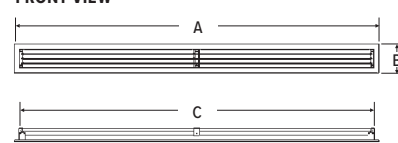
TOP VIEW



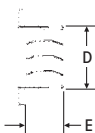
A	16 3/16"
B	7 7/8"
C	6 7/16"
D	1/4"
E	15 7/16"
F	2 9/16"

OPTIONAL FRONT ENCLOSURE GRILL - V46EG

FRONT VIEW



SIDE VIEW



A	47 13/16"
B	3 13/16"
C	46 9/16"
D	2 1/2"
E	1 1/16"



Unit Illustrated: ZCVRB47N Zero Clearance Direct Vent Gas Fireplace (Natural Gas), MQZCVRB47RLF Fluted Liner. (Shown as a Vented Chase - top of chase is open.)

SERENE 60



SERENE 60 PRODUCT SPECIFICATIONS

MODEL	ZCVRB60N ZCVRB60NE MQZCVRB60NE2	ZCVRB60LP ZCVRB60LPE MQZCVRB60LPE2
Fuel	Natural Gas	Propane
Gas Control	Millivolt / IPI	Millivolt / IPI
Input Max.	35,000 BTU	35,000 BTU
Input Min.	23,000 BTU	28,000 BTU
FE (P.4.1-15)	55.27%/56.66%	55.27%/56.66%
Glass Size	60"W x 17 7/8"H	60"W x 17 7/8"H
Venting	5"/8"	5"/8"

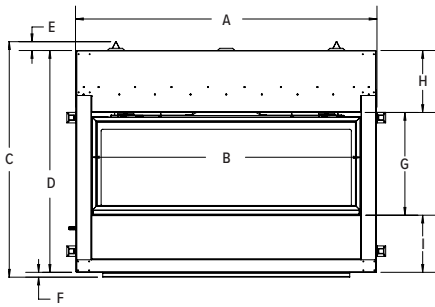
SERENE 60 VENTED CHASE OPTION

WITH OPENINGS (NO GRILLS)	Min. 200 sq/in.
Min. Enclosure Height	76"
Min. Opening Below Ceiling	1-7/8"
WITH GRILLS (MIN. AIR FREE OPENINGS)	220 sq/in.
Min. Enclosure Height	76"
Grill Opening (Max. distance from top of enclosure)	3/4"

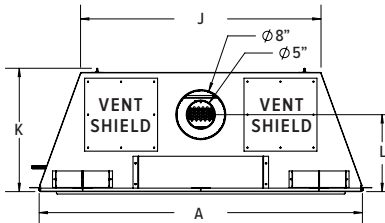
Unit Illustrated: MQZCVRB60NE2 Zero Clearance Direct Vent Gas Fireplace (Natural Gas), ZCVRB60S1BL Surround (Black), MQ46D Driftwood Log Set, MQSTONE10 Decorative Stones, MQVL60RSLB Liner (Stacked Brick). (Shown as a Vented Chase – top of chase is open.)

SERENE 60 PRODUCT DIMENSIONS

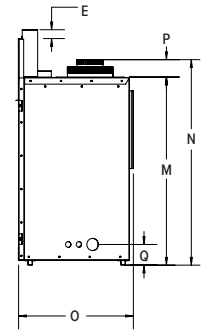
FRONT VIEW



TOP VIEW



SIDE VIEW



- A 66 $\frac{3}{16}$ "
- B 61 $\frac{1}{8}$ "
- C 39 $\frac{9}{16}$ "
- D 38 $\frac{5}{16}$ "
- E $\frac{1}{2}$ "
- F $\frac{3}{4}$ "
- G 19 $\frac{15}{16}$ "
- H 9 $\frac{9}{16}$ "
- I 8 $\frac{13}{16}$ "
- J 53 $\frac{3}{8}$ "
- K 19 $\frac{3}{8}$ "
- L 11 $\frac{9}{16}$ "
- M 33 $\frac{1}{16}$ "
- N 35 $\frac{3}{4}$ "
- O 18 $\frac{3}{4}$ "
- P 2 $\frac{11}{16}$ "
- Q 3 $\frac{3}{16}$ "

FIREPLACE DIMENSIONS

Width	Height	Depth
66 $\frac{3}{16}$ "	39 $\frac{9}{16}$ "	19 $\frac{3}{8}$ "

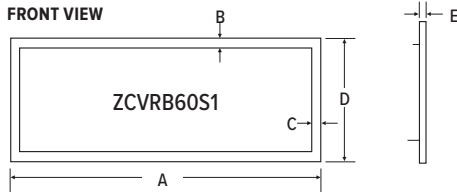
FRAMING DIMENSIONS

Width	Height	Depth
67"	39 $\frac{3}{4}$ "	19 $\frac{1}{4}$ "*

*dependent of finishing material used.

OPTIONAL WALL SURROUND

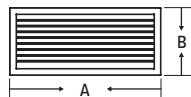
FRONT VIEW



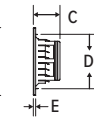
- A 64"
- B 1 $\frac{1}{2}$ "
- C 1 $\frac{1}{2}$ "
- D 23"
- E $\frac{3}{4}$ "

OPTIONAL SIDE GRILL - VL60EGS

FRONT VIEW



SIDE VIEW



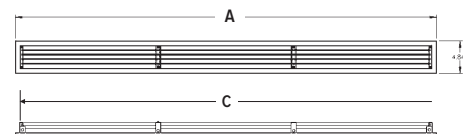
TOP VIEW



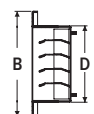
- A 16 $\frac{3}{16}$ "
- B 7 $\frac{7}{8}$ "
- C 2 $\frac{7}{8}$ "
- D 6 $\frac{7}{16}$ "
- E $\frac{1}{4}$ "
- F 15 $\frac{7}{16}$ "
- G 2 $\frac{9}{16}$ "

OPTIONAL FRONT ENCLOSURE GRILL - VL60EG

FRONT VIEW



SIDE VIEW



- A 61 $\frac{3}{4}$ "
- B 4 $\frac{7}{8}$ "
- C 60 $\frac{1}{2}$ "
- D 3 $\frac{1}{2}$ "

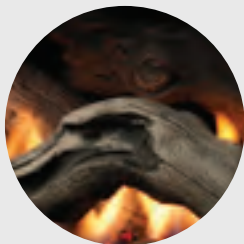


Unit Illustrated:

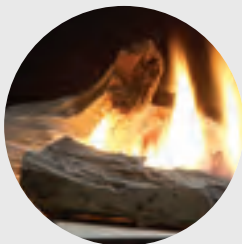
MQZCVRB60NE2 Zero Clearance Direct Vent Linear Gas Fireplace (Natural Gas), MQROCK3 Multi-Colored Rock Set, ZCVRB60PL Porcelain Liners. (Shown as a Vented Chase with Optional VL60EG - Front Enclosure Grill)

SERENE ACCESSORIES

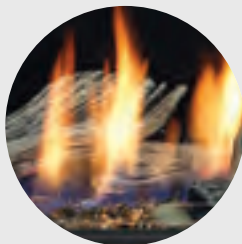
LOG SETS



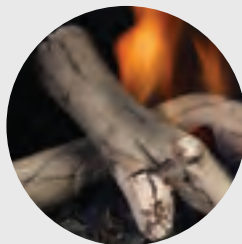
MQ46D
3-Piece
Driftwood Set



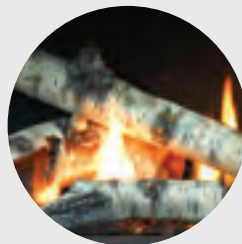
MQRBD1
4-Piece
Driftwood Set
with 4 Rocks



MQRBD2
3-Piece
Driftwood Set

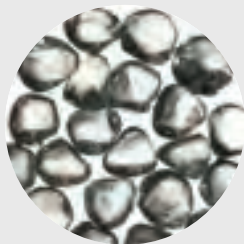


MQRBD4 (3-Piece)
MQRBD3 (5-Piece)
Driftwood Set

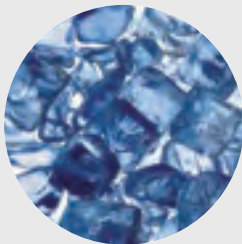


MQRBRW
5-Piece
Birch Log Set

MEDIA OPTIONS



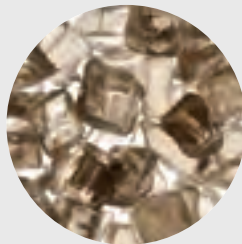
MQG5ZG
Zircon Glacier
Ice Glass



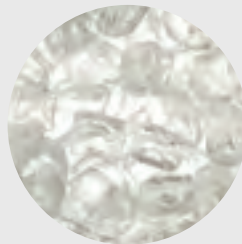
MQG5A
Cobalt
Ember Glass



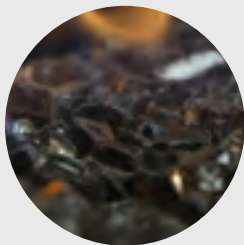
MQG5B
Black
Ember Glass



MQG5C
Bronze
Ember Glass



MQG5W
White
Ember Glass



MQEMBER
Ember
Chunks



MQSTONE
Decorative
Stones



MQROCK2
Natural
Rock Set



MQROCK3
Multi-Colored
Rock Set

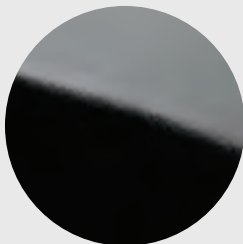


RBCB1
Multi-Colored
Cannonballs

LINERS



Fluted
(ZCVRB47 Only)

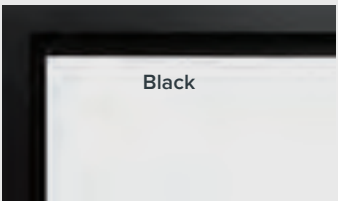


Porcelain
Reflective

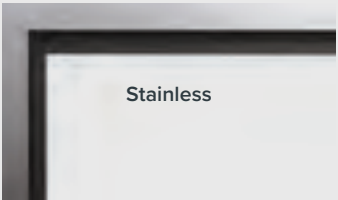


Stacked Brick
(ZCVRB60 Only)

WALL SURROUNDS



Black



Stainless

VENTED CHASE OPTION

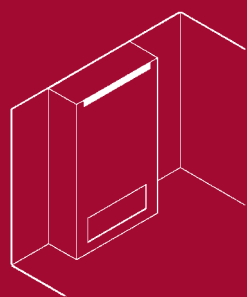
The chase of the appliance may be vented to achieve Cool Touch Walls or reduced Mantel Clearances. The following options are available to vent the chase:

- The top of the chase can be left open.
- A grill can be installed on the front of the chase.
- If the chase bumps out into the room, side grills can be installed on each side of the chase.

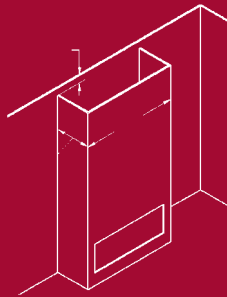
See illustrations and manual for further information.

Minimum enclosure height for a vented chase is measured from bottom of fireplace, ventilation of minimum free air opening is required. Choose between our Enclosure Grills (Front or Sides) or Custom Grill (if custom grills are used the louvers cannot slope) or adequate ventilation opening as stated in the manual. Grill or opening must meet minimum (as specified in the installation manual) of chase top/ceiling.

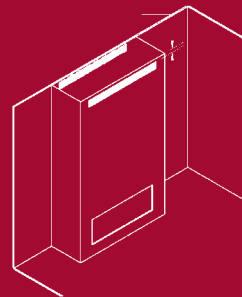
NOTE: To vent the fireplace chase, removal of vent shields from the fireplace is required.



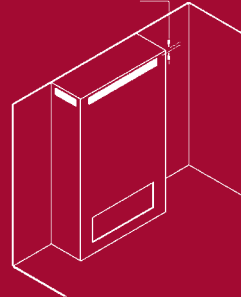
Framing to ceiling with open front



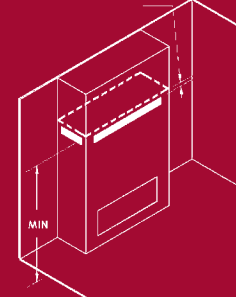
Open chase framing with enclosure min. below ceiling



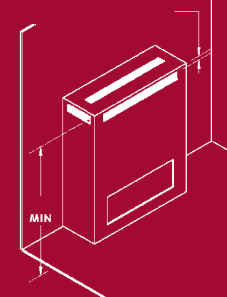
Framing to ceiling with vents at front and back



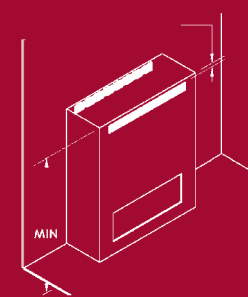
Framing to ceiling with front or side vents



Framing to ceiling, minimum enclosure with front or side vents



Minimum enclosure with front or side vents



Minimum enclosure with front and back vents



Unit Illustrated: ZCVRB60N Zero Clearance Direct Vent Gas Fireplace (Natural Gas), ZCVRB60S1SS Surround Stainless Steel, MOEMBER Ember Chunks, MORBD3 Driftwood Log Set, MQVL60RLSB Liner (Stacked Brick).

SKYLINE

ZERO CLEARANCE DIRECT VENT GAS FIREPLACE



Unit Illustrated: MQRB4236NT Zero Clearance Direct Vent Natural Gas Fireplace, HB42CVCK Designer Clean View Circulating Kit, MQRB42PL Porcelain Reflective Liners, Decorated with White Ember Glass.

ENJOY THE VIEW.

There is nothing subtle about this **SKYLINE**.

Its pure sophistication makes a statement with wide-view appeal and flexibility. Choose from the rocks and driftwood, decorative stones or ember glass in a choice of colors for a sleek contemporary look.



Unit Illustrated: ZCVRB3622N
Zero Clearance Direct Vent
Natural Gas Linear Fireplace,
with Decorative Bronze Glass,
ZCVRB36SSS Surround Edge
(Stainless Steel), Z3622PRL
Porcelain Reflective Liner, and
optional ULK2 Universal Light Kit.



Unit Illustrated: ZCVRB3622N
Zero Clearance Direct Vent
Natural Gas Fireplace, Z3622PRL
Porcelain Reflective Liners,
MQRBD1 Contemporary Rock
and Driftwood Set.

STANDARD FEATURES

- Millivolt or IPI valve system will operate during power failures with Hi/low heat and flame adjustment
- Glass media: Bronze (ZCVRB3622), White (MQRB4236)
- Safety Screen Barrier



OPTIONAL FEATURES

Designer Clean View Circulating Kit:
(MQRB4236 Model Only)
No Louvers Required

Surround – Edge (ZCVRB3622 only)
Black or Stainless Steel (36"W x 22 1/2"H)

Surround – Flatt (ZCVRB3622 only)
Black (45 1/16"W x 34 5/8"H)

Fan Kit:
Heat activated with variable speed control

Universal Light Kit:
Two Lamps (Series II models only)

Porcelain Reflective Liners

Driftwood Log Sets:
Four Pieces Driftwood with Four Rocks (MQRBD1) or Three Piece Driftwood Log Set (MQRBD4)

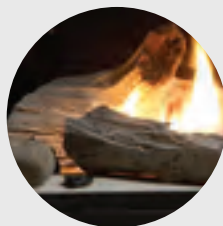
Media Options:
Contemporary Rocks, Decorative Stones, Decorative Ember Glass (Glacier Ice, Cobalt Blue, Black, Bronze, White) or Ember Chunks

Thermostat:
Wall Mount Thermostat or Programmable Thermostat

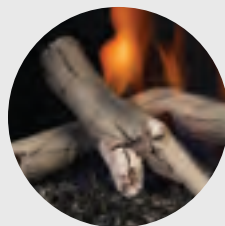
Remote Controls:
On/Off, Thermostat, Thermostat Modulating

SKYLINE ACCESSORIES

LOG SETS

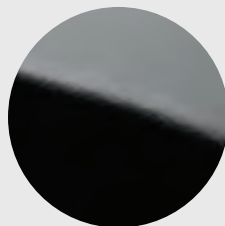


MQRBD1
4 Piece
Driftwood Set
with 4 Rocks



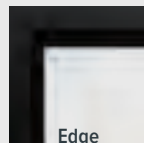
MQRBD4
3 Piece
Driftwood Set

LINER

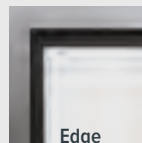


Porcelain
Reflective
Liner

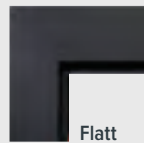
SURROUNDS



Edge
ZCVRB36SBL

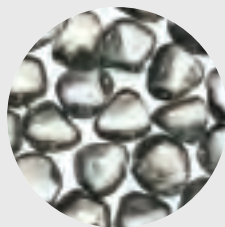


Edge
ZCVRB36SSS



Flatt
ZCVRB36SWFBL

MEDIA OPTIONS



MQG5ZG
Zircon Glacier
Ice Glass



MQG5A
Cobalt
Ember Glass



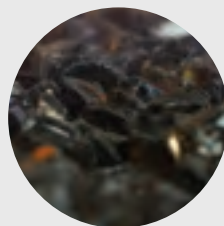
MQG5B
Black
Ember Glass



MQG5C
Bronze
Ember Glass



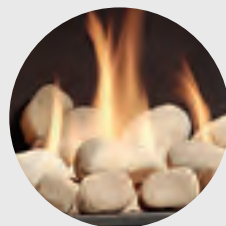
MQG5W
White
Ember Glass



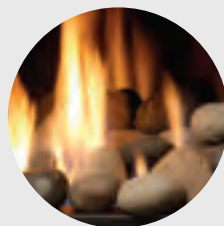
MQEMBER
Ember
Chunks



MQSTONE Decorative
Stones



MQROCK2
Natural
Rock Set



MQROCK3
Multi-Colored
Rock Set

Unit Illustrated: ZCVRB3622N Zero Clearance Direct Vent Natural Gas
Fireplace, ZCVRB36SBL Surround Edge (Black), Z3622PRL Porcelain
Reflective Liners, MQRBD1 Contemporary Rock and Driftwood Set.

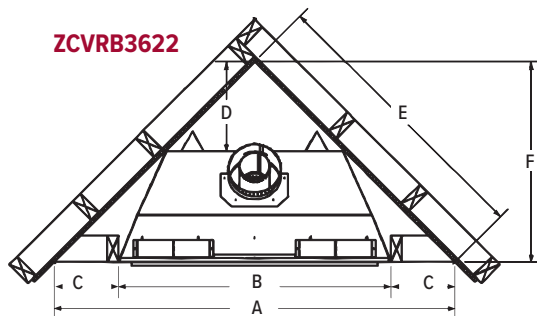


SKYLINE PRODUCT DIMENSIONS

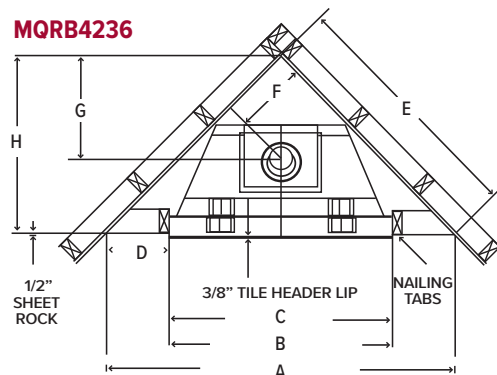
CLEAN VIEW FRAMING

CORNER FRAMING DIMENSIONS (INCHES)

ZCVRB3622



MQRB4236



ZCVRB4236 MQRB4236

A	53 1/2"	A	63 13/16"
B	36 3/8"	B	42 7/16"
C	8 9/16"	C	42 1/16"
D	12"	D	10 11/16"
E	37 7/8"	E	45 1/8"
F	26 3/4"	F	13 3/4"
G	—	G	19 1/2"
H	—	H	31 7/8"

TOP FLUE MODEL VIEWING AREA

	Width	Height
ZCVRB3622	29 3/4"	16 1/8"
MQRB4236	33 3/8"	20 3/8"

TOP FLUE MODEL	Height		Front Width		Depth	
	Actual	Framing	Actual	Framing	Actual	Framing
ZCVRB3622	37 1/8"	37 1/4"	36"	36 3/8"	17 7/16"	17 1/2"
MQRB4236	36 13/16"	43"	42 1/16"	42 7/16"	18 15/16"	19 1/2"

SKYLINE PRODUCT SPECIFICATIONS

Model	ZCVRB3622N	ZCVRB3622LP	MQRB4236NT	MQRB4236LPT
	ZCVRB3622NE	ZCVRB3622LPE	MQRB4236NTE	MQRB4236LPTE
Fuel	Natural Gas	Propane	Natural Gas	Propane
Input Max.	17,500	17,500	24,000	24,000
Input Min.	12,000	14,000	18,000	18,000
FE (P.4.1-15)	61.36% / 65.82%	62.72% / 64.55%	54.84% / 57.05%	57.15% / 59.13%

Unit Illustrated (left): ZCVRB3622N Zero Clearance Direct Vent Natural Gas Linear Fireplace, with Decorative Bronze Glass, ZCVRB36SWFBL Surround (Flatt – Black), Z3622PRL Porcelain Reflective Liner, and optional ULK2 Universal Light Kit.



SOLACE

ZERO CLEARANCE DIRECT VENT GAS FIREPLACE



Unit Illustrated: Solace HBZDV4736N Direct Vent Fireplace, LOGF36 Fiber Split Oak Log Set, VLBIT4 Log Bits, HB47CVCK Designer Clean View Circulating Kit, HB47RRH Red Herringbone Brick Liner.

FIND YOUR SOLACE.

Imagine lively gatherings or times of quiet reflection in front of the beautiful **SOLACE II**. Available in two sizes, the Solace II allows you to transform your fireplace into something truly unique.

With so much style and attention, the Solace II is available in a range of sizes and styles. You can choose from our mid-efficient rated fireplace for ambiance and taking the chill out of the room, or our higher-efficient version for additional warmth.



Unit Illustrated: Solace II HBZDV4224N Direct Vent Fireplace, MQLOGC45 Oak Log Set, HB42GBL Grill Kit – Black, HB42RLT Traditional Brick Liner.

STANDARD FEATURES

- Millivolt or IPI valve system allows operation during a power failure with Hi/Low heat and flame adjustment
- Dual burner with Realistic Flame Pattern
- Safety Screen Barrier



PF1



GFRC



OPTIONAL FEATURES

Designer Clean View Circulating Kit:

No Louvers Required

Louvers:

Grills available in Black

Fan Kit:

Heat activated with variable speed control

Accessories:

Log sets or rock sets required

Liners:

Porcelain Reflective Liner or Brick Liners

SOLACE ACCESSORIES

LOG SETS



LOGF36
Fibre Split Oak
(SOLACE)



MQLOGC45
Burnt Oak
(SOLACE II)

MEDIA OPTIONS

REQUIRES ROCK SUPPORT PLATFORM (MQRSP4)

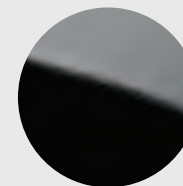


MQROCK2
Natural
Rock Set

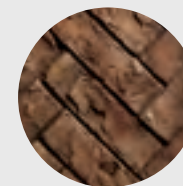


MQROCK3
Multi-Colored
Rock Set

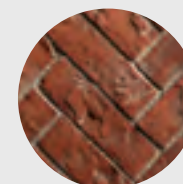
LINERS



Porcelain
Reflective Liner



Herringbone
Brick Liner



Red Herringbone
Brick Liner



Traditional
Brick Liner

SOLACE PRODUCT SPECIFICATIONS

MODEL	MQHBZDV3636N MQHBZDV3636NE	MQHBZDV3636LP MQHBZDV3636LPE	MQHBZDV4236N MQHBZDV4236NE	MQHBZDV4236LP MQHBZDV4236LPE	HBZDV4736N HBZDV4736NE	MQHBZDV4236LP MQHBZDV4236LPE
Fuel	Natural Gas	Propane	Natural Gas	Propane	Natural Gas	Propane
Flue	Top	Top	Top	Top	Top	Top
Input Max.	30,500 BTU	29,000 BTU	30,500 BTU	29,000 BTU	40,000 BTU	36,000 BTU
Input Min.	20,600 BTU	22,200 BTU	20,600 BTU	22,200 BTU	27,000 BTU	30,200 BTU
FE (P.4.1-15)	61.98% / 63.92%	67.63% / 69.25%	61.98% / 63.92%	67.63% / 69.25%	60.39% / 61.88%	53.79% / 54.9%
Log Set	LOGF36	LOGF36	LOGF36	LOGF36	LOGF36	LOGF36

SOLACE II PRODUCT SPECIFICATIONS

MODEL	HBZDV3624N HBZDV3624NE	HBZDV3624LP HBZDV3624LPE	HBZDV4224N HBZDV4224NE	HBZDV4224LP HBZDV4224LPE
Fuel	Natural Gas	Propane	Natural Gas	Propane
Flue	Top	Top	Top	Top
Input Max.	24,000 BTU	22,000 BTU	24,000 BTU	22,000 BTU
Input Min.	14,000 BTU	15,000 BTU	14,000 BTU	15,000 BTU
FE (P.4.1-15)	50.48% / 52.3%	52.59% / 54.24%	55.69% / 57.81%	57.03% / 59.09%
Log Set	MQLOGC45	MQLOGC45	MQLOGC45	MQLOGC45

SOLACE PRODUCT DIMENSIONS

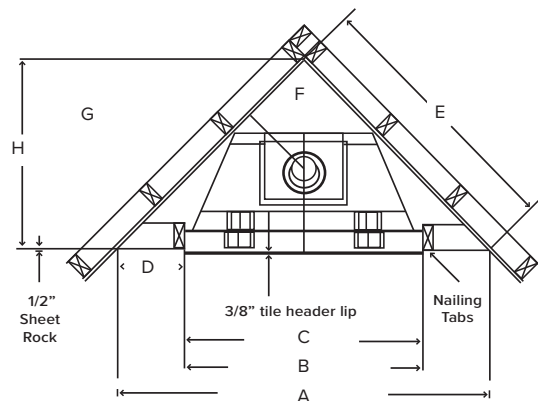
TOP FLUE MODEL	Height		Front Width		Depth	
	Actual	Framing	Actual	Framing	Actual	Framing

LOUVERS

HBZDV36	34 13/16"	35"	36"	36 3/8"	16 7/16"	17"
HBZDV42	37"	37 3/8"	41 7/8"	42 3/8"	16 7/16"	17"
HBZDV47	43 1/16"	43 1/8"	47 1/16"	47 3/8"	19 7/16"	19 1/2"

CLEAN VIEW CIRCULATING KIT

HBZDV36	34 1/16"	41"	38 1/16"	38 7/16"	18 7/8"	19 1/2"
HBZDV42	36 13/16"	43"	42 1/16"	42 7/16"	18 15/16"	19 1/2"
HBZDV47	49"	49 1/8"	48 1/16"	48 3/8"	21 15/16"	22"



CORNER FRAMING DIMENSIONS (INCHES): LOUVERED UNITS

HBZDV36	HBZDV42	HBZDV47
A 54 13/16"	A 58 13/16"	A 65 1/4"
B 36 3/8"	B 42 3/8"	B 47 3/8"
C 36"	C 41 7/8"	C 47 1/16"
D 9 3/16"	D 8 1/4"	D 8 15/16"
E 38 3/4"	E 41 5/8"	E 46 1/8"
F 12 3/8"	F 13 3/4"	F 13 15/16"
G 17 9/16"	G 19 1/2"	G 19 11/16"
H 27 3/8"	H 29 7/16"	H 32 5/8"

CORNER FRAMING DIMENSIONS (INCHES): CLEAN VIEW CIRCULATING KIT (CVK)

HBZDV36	HBZDV42	HBZDV47
A 59 7/8"	A 63 13/16"	A 70 3/16"
B 38 7/16"	B 42 7/16"	B 48 3/8"
C 38 1/8"	C 42 1/16"	C 48 1/16"
D 10 11/16"	D 10 11/16"	D 10 7/8"
E 42 5/16"	E 45 1/8"	E 49 5/8"
F 12 3/8"	F 13 3/4"	F 13 15/16"
G 17 9/16"	G 19 1/2"	G 19 11/16"
H 29 5/16"	H 31 7/8"	H 35 1/16"

TOP FLUE MODEL VIEWING AREA

	Height	Width
HBZDV36	29 3/4"	18 5/8"
HBZDV42	33 3/8"	20 3/8"
HBZDV47	39 1/2"	26 3/8"



Unit Illustrated: Solace MQHBZDV4236N Direct Vent Fireplace, LOGF36 Fiber Split Oak Log Set, HB42GBL Black Grills, HB42RLT Traditional Brick Liner.

SOLARA II

ZERO CLEARANCE DIRECT VENT GAS FIREPLACE



Unit Illustrated:

ZCV3622N Zero Clearance Direct Vent
Fireplace (Natural Gas), ZCV36SWFBL Surround
(Flatt – Black), MQLOGC23 Driftwood Log Set,
ZCV3622PRL Porcelain Reflective Liner.

ADD SOME SIZZLE.

Incredibly versatile, the **SOLARA II** is perfectly at home with a classic mantle or contemporary wall surround. Plus you can also choose a log set or a contemporary rock set.



Unit Illustrated:
MQZDV3318N Zero Clearance
Direct Vent Natural Gas Fireplace,
VI30GBL Grill Kit (Black), MQRSP5
Rock Support Platform, MQRCK2
Rock Set (Natural), Z3318PRL
Porcelain Reflective Liner.



Unit Illustrated:
ZCV3622N Zero Clearance Direct
Vent Gas Fireplace (Natural Gas),
MQLOGC23 Driftwood Log Set,
ZCV3622PRL Porcelain Reflective
Liner, ZCV36S1BL Surround
(Hearth Mount – Black).

STANDARD FEATURES

- Millivolt or IPI valve system allows operation during a power failure with Hi/Low heat and flame adjustment
- Proprietary burner, with realistic burn
- Mobile Home, Bedroom and Bed Sitting Room approved
- Safety Screen Barrier



OPTIONAL FEATURES

Designer Clean View Circulating Kit (MQZDV3318 only):
No Louvers Required

Louvers (MQZDV3318 only):
Grills available in Black

Surround – Hearth Mount (Louvered Units, MQZDV3318 only):
Black (Coverage: 31 3/16" H x 36 5/8" W)

Surround – Hearth Mount (ZCV3622 only):
Black (Coverage: 34 1/8" H x 39" W)

Surround – Flatt (ZCV3622 only):
Black (Coverage: 37 1/4" H x 40 7/8" W)

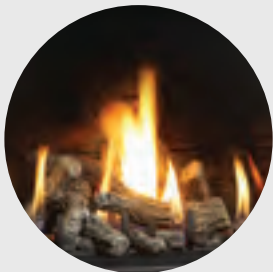
Fan Kit:
Heat activated with variable speed control

Accessories:
Log sets or rock sets required

Liners:
Porcelain Reflective Liner or
Metal Brick Liners

SOLARA II ACCESSORIES

LOG SETS



MQLOGC22
Split Oak Log Set



MQLOGC23
Driftwood Log Set

ROCK SETS



MQROCK2
Natural Rock Set

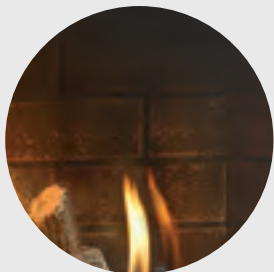


MQROCK3
Multi-Colored Rock Set

LINERS

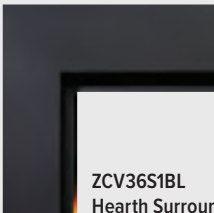


ZCV3622PRL
Porcelain Reflective

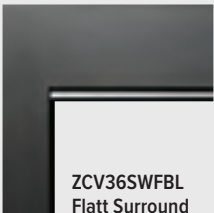


ZCV3622ML
Metal Brick

SURROUNDS



ZCV36S1BL
Hearth Surround

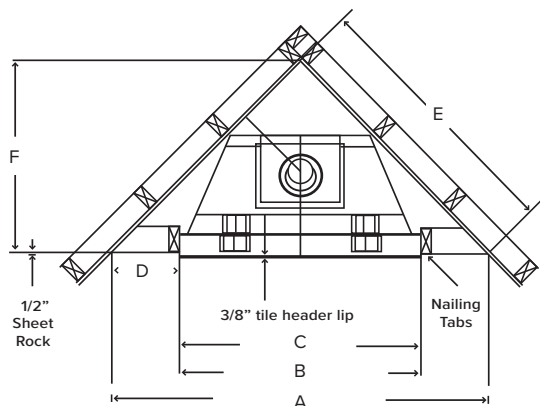


ZCV36SWFBL
Flatt Surround

Unit Illustrated: ZCV3622N Zero Clearance Direct Vent Fireplace (Natural Gas), MQLOGC22 Oak Log Set, ZCV3622ML Metal Brick Liner. (Finishing materials that cover the Fireplace must be non-combustible materials.)



SOLARA II PRODUCT DIMENSIONS



LOUVERED FRAMING DIMENSIONS (INCHES)

MQZDV3318

A 43 3/4"
B 33"
C 32 1/2"
D 5 3/8"
E 31"
F 21 7/8"

CLEAN VIEW FRAMING DIMENSIONS (INCHES)

MQZDV3318 ZCV3622

A 48 7/8" A 53 1/2"
B 33 7/8" B 36"
C 33 9/16" C 36 3/8"
D 7 1/2" D 8 9/16"
E 34 9/16" E 37 7/8"
F 24 7/16" F 26 3/4"

TOP FLUE MODEL VIEWING AREA

MQZDV3318 ZCV3622

	Width	Height
MQZDV3318	25 1/2"	14 5/16"
ZCV3622	29 3/4"	18 5/8"

TOP FLUE MODEL

MODEL	Height		Front Width		Depth	
	Actual	Framing	Actual	Framing	Actual	Framing

LOUVERS

MQZDV3318	30 3/8"	31"	32 3/8"	33"	15 3/4"	15 1/4"
-----------	---------	-----	---------	-----	---------	---------

CLEAN VIEW CIRCULATING KIT (CVCK)

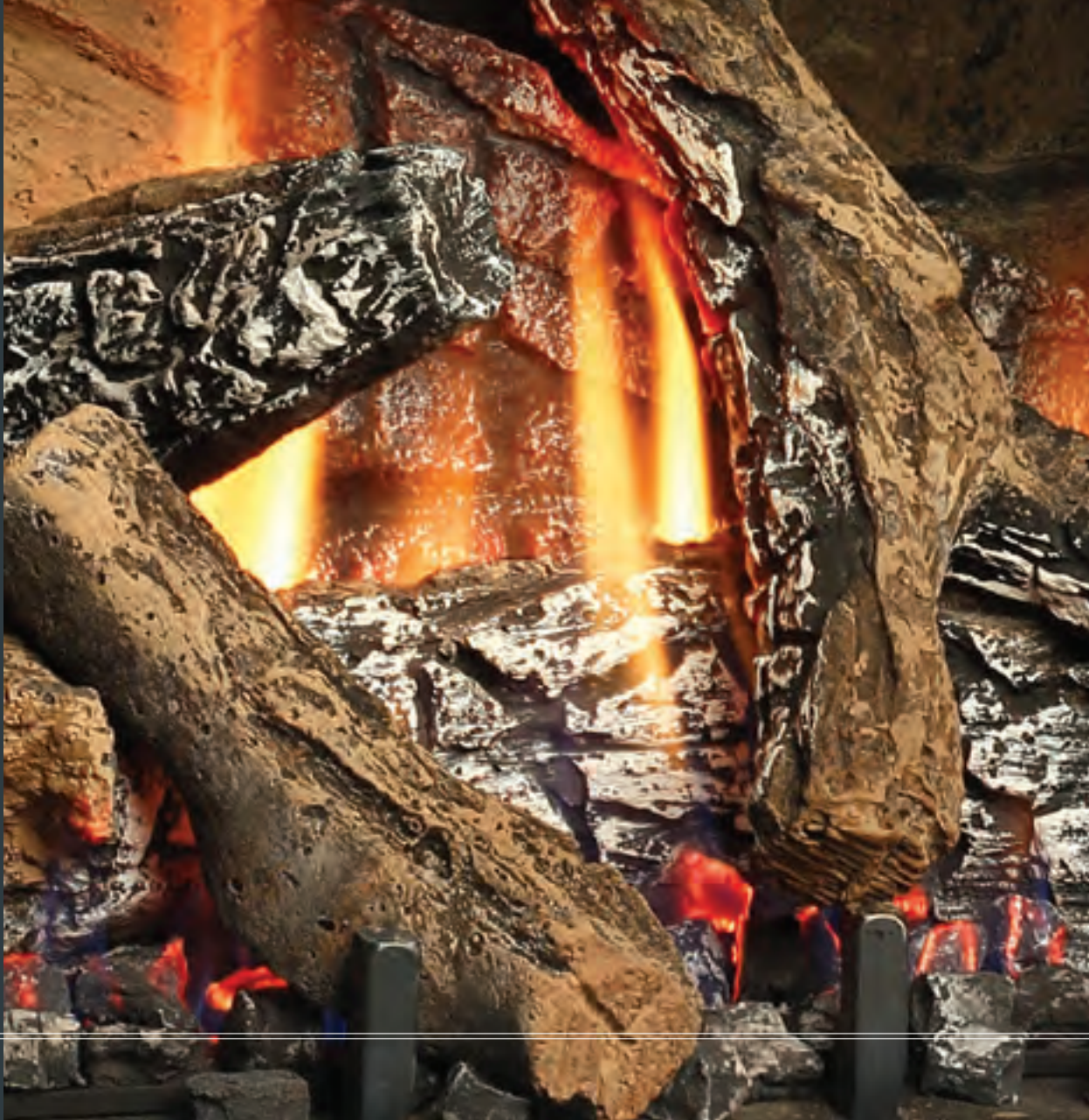
MQZDV3318	30 3/8"	33 3/8"	33 9/16"	33 7/8"	18 9/16"	17 3/4"
ZCV3622	33 1/2"	37 1/4"	36"	36 3/8"	17 7/16"	17 1/2"

SOLARA II PRODUCT SPECIFICATIONS

MODEL	MQZDV3318N MQZDV3318NE	MQZDV3318LP MQZDV3318LPE	ZCV3622N ZCV3622NE	ZCV3622LP ZCV3622LPE
Fuel	Natural Gas	Propane	Natural Gas	Propane
Input Max.	19,000 BTU	18,000 BTU	18,000 BTU	18,000 BTU
Input Min.	12,100 BTU	11,900 BTU	13,000 BTU	15,000 BTU
FE (P.4.1-15)	51.72% / 54.25%	55.49% / 57.91%	60.54% / 63.46%	62.09% / 65.09%

Unit Illustrated:
ZCV3622N Zero Clearance
Direct Vent Natural Gas
Fireplace, ZCV36SWFBL
Surround (Flatt -Black),
ZCV3622PRL Porcelain
Reflective Liner, MQLOGC23
Log Set (Driftwood).





FREESTANDING STOVES



VANTAGE

FREE STANDING DIRECT VENT GAS STOVE



Unit Illustrated: MQFDV453N Free Standing Direct Vent Stove – Natural Gas, F450FBL Door Front – Charcoal with Black Posts, MQ453SDBL Side Doors with Black Frame and Charcoal Panel, MQLOGF453 Log Set – Driftwood, MQ453RLH Herringbone Brick Liner, F45FK Fan Kit.

GET THE BEST VANTAGE.

Every angle gives you a beautiful view of the flames with the **VANTAGE**. This contemporary take on a classic woodstove adds warmth with 3-sided glass and sleek charcoal finish with flat black or stainless steel accents. Amp up the impact with your choice of log sets, decorative stones, rocks, and cannonballs or even ember glass.



FDV451N Free Standing Stove – Natural Gas, F450FBL Door Front – Charcoal with Black Posts, F451SDSBL Side Doors – Solid Charcoal Panel with Black Frame, MQG5C Bronze Glass (x3), MQROCK3 Rock Set – Multi-Colored, F451RLT Traditional Brick Liner, F45FK Fan Kit.

FDV451N Free Standing Direct Vent Stove – Natural Gas, F450FBL Door Front – Charcoal with Black Posts, F451SDSBL Side Doors – Solid Charcoal Panel with Black Frame, MQG5C Bronze Glass (x3), RBCB1 Cannonballs, F45LG Log Grate, F45FK Fan Kit.

MQFDV453N Free Standing Stove – Natural Gas, F450FBL Door Front – Charcoal with Black Posts, MQ453SDBL Side Doors with Black Frame and Charcoal Panel, MQG5C Bronze Glass (x3), MQSTONES Decorative Stones, MQ451RLH Herringbone Brick Liner, F45FK Fan Kit.

STANDARD FEATURES

- Dual burner system, with Realistic Flame Pattern
- Millivolt or IPI valve system allows operation during a power failure with Hi/Low heat and flame adjustment
- Heat radiating ceramic glass
- Mobile home approved
- Approved for installation in a bedroom or bed sitting room
- Proflame II Models include Remote Control; features flame, fan, thermostat, smart thermostat (FDV451NE2, FDV451LPE2, MQFDV453NE2 and MQFDV453LPE2 Models only)

OPTIONAL FEATURES

Fan Kit:

Heat activated with variable speed control

Colour Options:

Charcoal with your choice of accent colour: Flat Black or Stainless, with matching side panels

Media:

Contemporary Rocks, Decorative Stones, Decorative Ember Glass (Glacier Ice, Cobalt Blue, Black, Bronze, White), Ember Chunks or Multi-Colored Cannonballs

Log Sets:

Driftwood or Oak

Liners:

Traditional, Herringbone or Black Fluted Refractory Brick Liner, or Porcelain Reflective Liner

Thermostat:

Wall Mount Thermostat or Programmable Thermostat

Remote Controls (Millivolt or IPI PF1):

Thermostat on/off, Thermostat on/off modulating, Thermostat on/off modulating and fan control

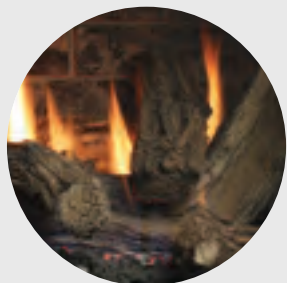
B-Vent Adapter:

Convert Stove to 4" B-Vent

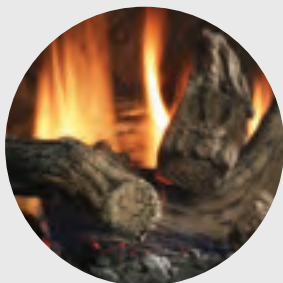


VANTAGE ACCESSORIES

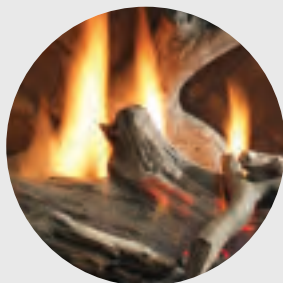
LOG SETS



LOGF451
Oak
Log Set

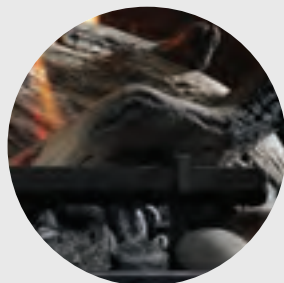


MQLOGF452
Oak
Log Set



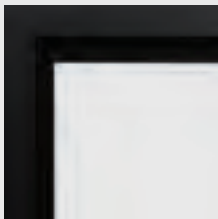
MQLOGF453
Driftwood
Log Set

LOG GRATE

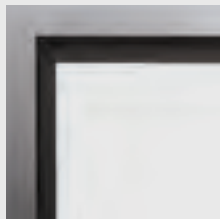


F45LG
Log Grate
(optional)

COLOURS



Flat Black

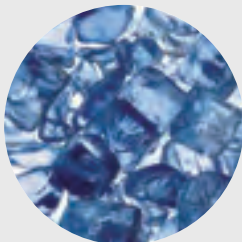


Stainless

MEDIA OPTIONS



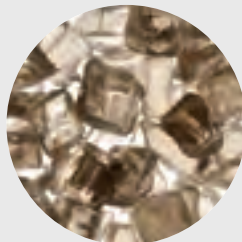
MQG5ZG
Zircon Glacier
Ice Glass



MQG5A
Cobalt
Ember Glass



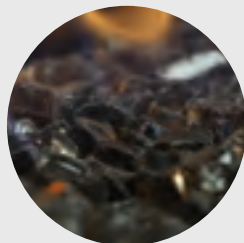
MQG5B
Black
Ember Glass



MQG5C
Bronze
Ember Glass



MQG5W
White
Ember Glass



MQEMBER
Ember
Chunks



MQSTONE
Decorative
Stones



MQROCK2
Natural
Rock Set

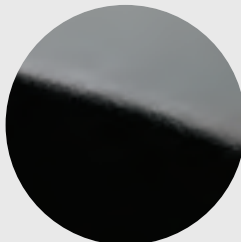


MQROCK3
Multi-Colored
Rock Set



RBCB1
Multi-Colored
Cannonballs

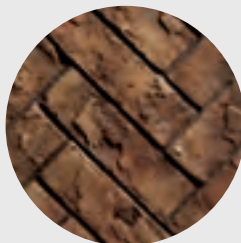
LINERS



Porcelain
Reflective
Liner



Traditional
Brick Liner

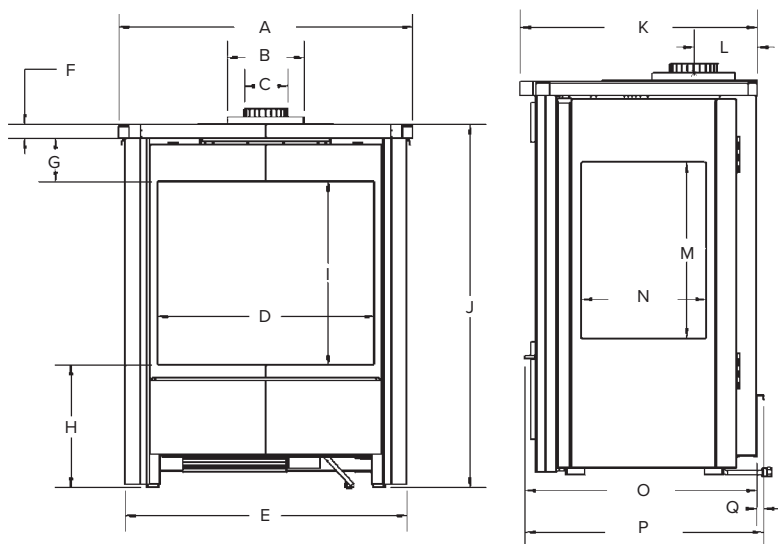


Herringbone
Brick Liner



Fluted
Liner

VANTAGE PRODUCT DIMENSIONS



- A 27 1/8"
- B 7"
- C 4"
- D 20"
- E 26"
- F 1 1/4"
- G 4"
- H 11 5/16"
- I 16 15/16"
- J 33 1/2"
- K 20 1/8"
- L 5 3/8"
- M 15"
- N 10 5/8"
- O 19 3/4"
- P 20 5/16"
- Q 9/16"

MINIMUM CLEARANCES TO COMBUSTIBLES:

- 36" from front of unit
- 15 1/2" from side of unit
- 2 1/2" from back of unit

ALCOVE INSTALLATION:

- 48" depth (max.)
- 71 1/2" height (min.)
- 58" width (min.)



Stainless Steel and Flat Black
Vent Lid

VANTAGE PRODUCT SPECIFICATIONS

MODEL	FDV451N FDV451NE2	FDV451LP FDV451LPE2	MQFDV453N MQFDV453NE2	MQFDV453LP MQFDV453LPE2
Fuel	Natural Gas	Propane	Natural Gas	Propane
Gas Control	Millivolt / IPI	Millivolt / IPI	Millivolt / IPI	Millivolt / IPI
Input Max.	34,500 BTU	31,000 BTU	34,500 BTU	31,000 BTU
Input Min.	23,750 BTU	24,500 BTU	23,750 BTU	24,500 BTU
FE (P.4.1-15)	65.89% / 67.72%	72.14% / 74.06%	65.89% / 67.72%	72.14% / 74.06%
Glass	Single	Single	Three	Three



Unit Illustrated: MQFDV453N Free Standing Direct Vent Stove – Natural Gas, F450FSS Door Front - Charcoal with Stainless Steel Posts, MQ453SDSS Side Doors with Stainless Steel Frame and Charcoal Panel, MQG5C Bronze Glass (x3), MQ453PL Porcelain Liner, F45FK Fan Kit.

SENTINEL

FREE STANDING DIRECT VENT GAS STOVE

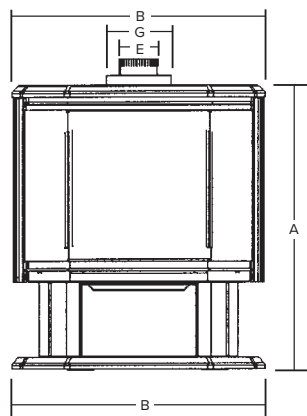


Unit Illustrated: FDV350N Direct Vent Natural Gas Stove, F35DB Black Door and Ceramic Glass, LOGF35 Fibre Oak Log Set with Embers.

STANDING AT ATTENTION.

The **SENTINEL** is a safe and efficient heating appliance with the convenience of gas. Your best choice for installation anywhere throughout your home.

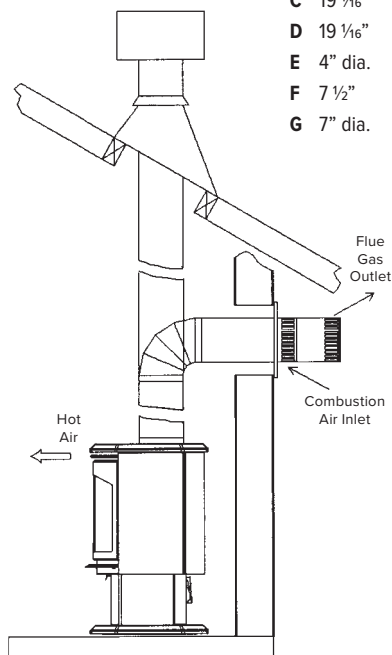
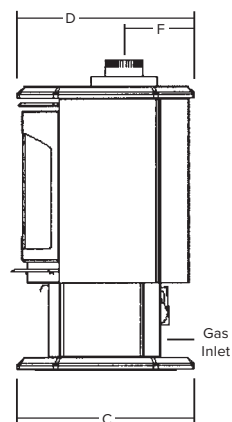
SENTINEL PRODUCT DIMENSIONS



With a direct vent appliance you can vent either through the side wall above the unit or straight up through the roof.

FDV350

- A 30 3/8"
- B 27 5/16"
- C 19 1/16"
- D 19 1/16"
- E 4" dia.
- F 7 1/2"
- G 7" dia.



SENTINEL PRODUCT SPECIFICATIONS

MODEL	FDV350N FDV350NE2	FDV350LP FDV350LPE2
Fuel	Natural Gas	Propane
Input Max.	37,000 BTU	35,000 BTU
Input Min.	29,000 BTU	27,000 BTU
FE (P.4.1-15)	66.63% / 67.90%	67.64% / 70.10%



Safety Screen
Barrier

STANDARD FEATURES

- Millivolt Valve with Hi-Low heat and flame adjustment and allows operation during a power failure
- Proflame II (PF2) Models include Remote Control – Features flame, fan, thermostat, smart thermostat and battery backup
- Dual burner system, with realistic flame pattern
- Heat radiating ceramic glass with panoramic view from three sides
- Mobile home approved
- Approved for installation in a bedroom or bed sitting room
- Black Louver
- Fibre Oak Log Set with Embers

OPTIONAL FEATURES

Fan Kit:

Heat activated with variable speed control

Liner:

Refractory Brick

Thermostat:

Wall Mount Millivolt Thermostat or Programmable Thermostat

Remote Control (Millivolt):

On/Off, Thermostat On/Off, Thermostat On/Off modulating, Thermostat On/Off modulating

B-Vent Adapter:

Convert Stove to 4" B-Vent

MINIMUM CLEARANCES TO COMBUSTIBLES

- 12" from side of unit
- 3" from back of unit
- 3" from side of unit in corner

ALCOVE INSTALLATION

- 30" depth (max.)
- 55 1/2" height (min.)
- 52 1/2" width (min.)



PF2



PF1
OR MV



GFRC,
MV OR PF1

TITAN

FREE STANDING DIRECT VENT GAS STOVE

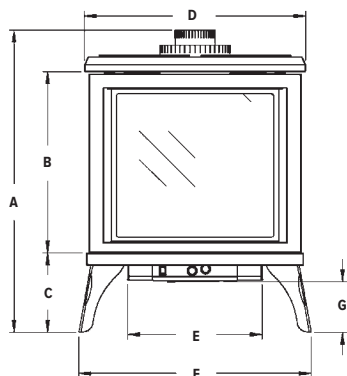


Unit Illustrated: FDV200SN Free Standing Stove (Natural Gas), LOGC200 Log Set (Cast Split Oak with glowing embers), FDV200RL Refractory Brick Liner.

A GREAT STRENGTH.

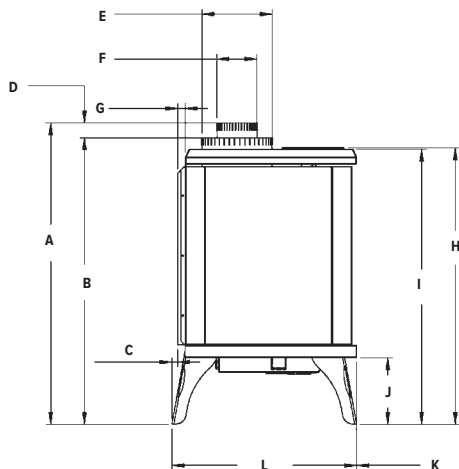
The **TITAN** provides sealed combustion where it draws outside air for combustion. This model can be vented either horizontally or vertically.

TITAN PRODUCT DIMENSIONS



FRONT VIEW

- A 30 ⁹/₁₆"
- B 18 ¹/₈"
- C 8 ⁵/₁₆"
- D 22 ⁵/₃₂"
- E 13 ¹/₂"
- F 23 ¹³/₃₂"
- G 5 ⁷/₁₆"



SIDE VIEW

- A 30 ⁹/₁₆"
- B 29 ¹/₁₆"
- C 5 ⁵/₈"
- D 1 ¹/₂"
- E 7"
- F 4"
- G 25 ⁵/₃₂"
- H 28 ¹/₃₂"
- I 27 ²⁹/₃₂"
- J 7 ¹/₁₆"
- K 7 ⁷/₃₂"
- L 18 ¹⁹/₃₂"

TITAN PRODUCT SPECIFICATIONS

MODEL	FDV200SN FDV200SNE2	FDV200SLP FDV200SLPE2
Fuel	Natural Gas	Propane
Input Max.	28,500 BTU	26,000 BTU
Input Min.	19,500 BTU	20,000 BTU
FE (P.4.1-15)	66.14%/68.56%	67.47%/69.89%

LOG SET



LOGC200
Cast Split Oak

STANDARD FEATURES

- Millivolt valve system allows operation during a power failure with Hi-Low heat and flame adjustment
- Proflame II (PF2) models include Remote Control – features flame, fan, thermostat, smart thermostat and battery backup
- Dual burner system, with realistic flame pattern
- Heat radiating ceramic glass
- Mobile home approved
- Approved for installation in a bedroom or bed sitting room
- Safety Screen Barrier
- Cast Oak Log Set with glowing embers

OPTIONAL FEATURES

Blower:

Heat activated with variable speed control

Liner:

Refractory Brick (3 pieces)

Remote Control (Millivolt):

On/Off, Thermostat On/Off, Thermostat On/Off Modulating

Thermostat:

Millivolt Wall Mount / Programmable Millivolt

MINIMUM CLEARANCES TO COMBUSTIBLES

- 6" from side of unit
- 3" from back of unit
- 3" from side of unit in corner

ALCOVE INSTALLATION

- 30" depth (max)
- 56" height (min.)
- 53" width (min.)



PF2



PF1
OR MV



GFRC,
MV OR PF1



INSERTS



CAPELLA 26

DIRECT VENT GAS FIREPLACE INSERT



Unit Illustrated: IDV26N Direct Vent Insert – Natural Gas, MOLOGF26 Fiber Split Oak Log Set, I26CV1BL Clean View Front – Black, I26S1BL Surround Black, IDV26RL Refractory Brick Liner.

UPDATE YOUR NATURAL BEAUTY.

Transform your existing wood burning fireplace into an updated focal point with the **CAPELLA** insert. Beautifully crafted, the Capella features the expansive Clean View and adapts easily to your style.



Unit Illustrated: Model IDV26N Direct Vent Insert – Natural Gas, I26CV2BL Clean View – Black, MOROCK3 Contemporary Rock Collection – Multi-Colored, MQRSP4 Rock Support Platform, IDV26PRL Porcelain Reflective Liner.

STANDARD FEATURES

- Dual Burner with glowing embers and decorative ash bed
- Millivolt valve system allows operation during power failure with adjustable flame control
- Matchless Piezo Ignition
- Heat radiating Ceramic Glass
- On/Off Rocker switch
- Heat activated blower with variable speed control
- Proflame II Models include Remote Control; features flame, fan, thermostat, smart thermostat (IDV26NE2, IDV26LPE2 Models only)
- Safety Screen Barrier



PF2



PF1
OR MV



GFRC,
MV OR PF1

OPTIONAL FEATURES

Clean View Kit:

Black

Picture Frame Clean View:

Black

Surrounds:

Black

Surrounds Picture Frame:

Black

Media (Glass or Rock Support Platform Required):

Contemporary Rocks, Driftwood Set, Decorative Stones, Decorative Ember Glass (Glacier Ice, Cobalt Blue, Black, Bronze, White), or Ember Chunks

Log Sets:

MQLOGF26 Fibre Split Oak or LOGF27 Fibre Split Oak

Liners:

Porcelain Reflective Liner or Brick Refractory Liner (Traditional)

Wall Mount Thermostat:

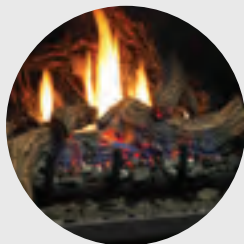
Standard On/Off or Programmable

Remote Control:

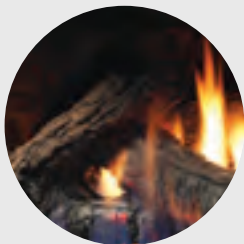
On/Off, Thermostat, Modulating Thermostat

CAPELLA 26 ACCESSORIES

LOG SETS

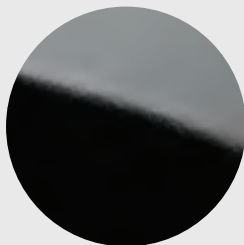


MQLOGF26
Fibre Split Oak



LOGF27
Fibre Split Oak

LINERS

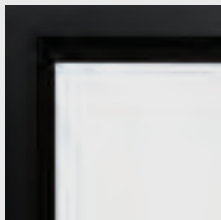


Porcelain
Reflective
Liner



Traditional
Brick Liner

TRIM



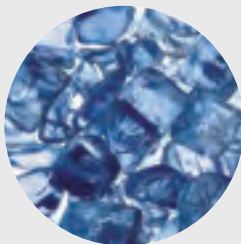
Flat Black

MEDIA OPTIONS

REQUIRES GLASS SUPPORT PLATFORMS



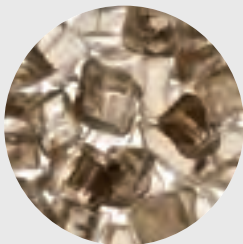
MQG5ZG
Zircon Glacier
Ice Glass



MQG5A
Cobalt
Ember Glass



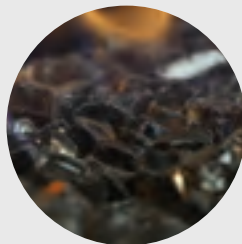
MQG5B
Black
Ember Glass



MQG5C
Bronze
Ember Glass



MQG5W
White
Ember Glass



MQEMBER
Ember
Chunks



MQSTONE
Decorative
Stones



MQROCK2
Natural
Rock Set



MQROCK3
Multi-Colored
Rock Set



CAPELLA 26 PRODUCT DIMENSIONS

MINIMUM FIREPLACE OPENING

MODEL	WIDTH	HEIGHT	DEPTH
IDV26	33"/28"	21 3/8"	14 3/8"

*Components In (CV1) 33", Components Out (CV2) 28"

MINIMUM UNIT COVERAGE

MODEL	WIDTH	HEIGHT
IDV26		
I26CV1 (Clean View)*	34 1/2"	22"
I26CV2 (Clean View)*	41 1/2"	25 1/2"
I26CV3 (Clean View)*	34"	22"

*Back Frame Dimension of Clean View Kit

CLEAN VIEW AND SURROUND SIZES

MODEL	WIDTH	HEIGHT	DEPTH
IDV26			
Clean View Three Sided			
I26CV1	35 5/8"	22 3/4"	1 3/4"
I26CV2	44 5/8"	26 5/8"	1 3/4"
I26CV3	35 5/8"	22 3/4"	3 1/2"
Clean View Picture Frame			
I26CVPF1	35 5/8"	25 7/8"	
I26CVPF2	44 7/8"	33 1/2"	
Surrounds – 3 Sided			
I26S1	42"	27 1/2"	
I26SU*	47 1/2"	28 5/8"	
Surrounds – Picture Frame			
I26CSPF1	39 3/8"	29 3/4"	
I26SU*	47 1/2"	35 5/8"	

*Universal Surround can be cut to size for custom application.

Opposite page, top to bottom:

IDV26N Direct Vent Insert (Natural Gas), MQLOGF26 Log Set, I26CVPF2BL Clean View Picture Frame (Black), IDV26RL Refractory Brick Liner.

IDV26N Direct Vent Insert (Natural Gas), MQLOGF26 Log Set, I26CV3BL Clean View (Black), and IDV26RL Brick Liner.

IDV26N Direct Vent Insert (Natural Gas), I26CV1BL Clean View (Black), MQLOGF26 Log Set, I26S1BL Surround (Black), IDV26RL Refractory Brick Liner.

CAPELLA 26 PRODUCT SPECIFICATIONS

MODEL	IDV26N	IDV26NE2	IDV26LP	IDV26LPE2
Fuel	Natural Gas	Propane	Natural Gas	Propane
Gas Control	Millivolt / IPI	Millivolt / IPI	Millivolt / IPI	Millivolt / IPI
Input Max.	30,000 BTU	30,000 BTU	30,000 BTU	30,000 BTU
Input Min.	21,000 BTU	21,000 BTU	25,000 BTU	25,000 BTU
FE (P.4.1-15)	65.25%	67.37%	66.30%	68.30%



Unit Illustrated: IDV26N Direct Vent Insert – Natural Gas, I26CV1BL Clean View – Black, MQSP8 Glass Support Platform, MQG5A Decorative Ember Glass – Cobalt Blue, IDV26PRL Porcelain Reflective Liner.

CAPRI 34/44

DIRECT VENT GAS FIREPLACE INSERT



Unit Illustrated: IDV44N Direct Vent Insert (Natural Gas), MQLOGF453 Log Set (Driftwood), MQRSP11 Support Platform (Driftwood), MQ44CV3BL Clean View (Black), MQ44SF1BL Door Frame (Black), I44S4432BL Surround (Black), IDV36RLT Brick Liner.

INSERT YOUR STYLE HERE.

The **CAPRI** Insert is a wonder, able to transform an existing wood burning fireplace into an updated focal point in any room. This Flush Mount Series is available in two sizes and your choice of liner, driftwood, oak or birch log set, decorative stone, or five different colors of crushed glass media.

With so many options, you'll find the **CAPRI** is perfectly attuned to your décor vision.



Unit Illustrated: IDV44N Direct Vent Insert (Natural Gas), LOGF36 Oak Log Set, MQ44CV2BL Clean View (Black), I44S4432BL Surround (Black), IDV36RLT Brick Liner.

STANDARD FEATURES

- Dual Burner with glowing embers and decorative ash bed
- Millivolt or IPI (Intermittent Pilot Ignition) valve system allows operation during power failure with adjustable flame control
- Heat activated blower with variable speed control
- Heat radiating Ceramic Glass
- On/Off Rocker switch
- Proflame II Models include Remote Control; features flame, fan, thermostat, and smart thermostat (IDV34NE2, IDV34LPE2, IDV44NE2, IDV44LPE2 Models only)
- Safety Screen Barrier



PF2



PF1
OR MV



GFRC,
MV OR PF1

OPTIONAL FEATURES

Designer Doors and Frames:

Black; Picture Frame or Series 1 Designer Door

Surrounds:

Black; Picture Frame or Universal

Liners:

Traditional Brick, Herringbone Brick, Porcelain Reflective or Fluted

Media Options:

Decorative Stones, Ember Chunks, Decorative Ember Glass (Glacier Ice, Cobalt Blue, Black, Bronze, White), Natural Rocks, or Multi-Colored Rocks

Log Sets:

Choice of Two Split Oak Sets, Two Driftwood Sets, or a Birch Log Set

Thermostats:

Standard On/Off or Programmable (wall mount)

CAPRI VARIATIONS

CLEAN VIEW CV3 WITH DOOR FRAME



CLEAN VIEW CV6 WITH BACKER SURROUND





CAPRI PRODUCT SPECIFICATIONS

MODEL	IDV34N IDV34NE2	IDV34LP IDV34LPE2	IDV44N IDV44NE2	IDV44LP IDV44LPE2
Fuel	Natural Gas	Propane	Natural Gas	Propane
Gas Control	Millivolt / IPI	Millivolt / IPI	Millivolt / IPI	Millivolt / IPI
Input Max.	31,000 BTU	28,500 BTU	34,250 BTU	30,000 BTU
Input Min.	20,900 BTU	23,100 BTU	24,000 BTU	22,840 BTU
Glass Size	25 5⁄8"W x 14 1⁄8"H	25 5⁄8"W x 14 1⁄8"H	29 7⁄8"W x 18 3⁄8"H	29 7⁄8"W x 18 3⁄8"H
FE (P.4.1-15)	62.86% / 64.73%	63.63% / 65.63%	60.18% / 61.70%	60.20% / 61.85%
Venting	3" / 3"	3" / 3"	4" / 3"	4" / 3"

CLEAN VIEW CV1 WITH DOOR FRAME & SURROUND

CLEAN VIEW CV2 WITH SURROUND

CLEAN VIEW CV4 WITH PICTURE FRAME



Unit Illustrated: IDV34N Direct Vent Fireplace Insert (Natural Gas), I34CV1BL Clean View (Black), MQRSP8 Glass Support Platform, MQSTONE Decorative Stones.

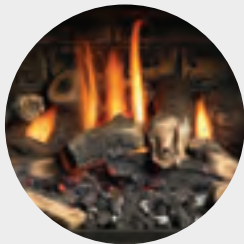
Unit Illustrated: IDV44N Direct Vent Fireplace Insert (Natural Gas), MQ44CV2BL Clean View (Black), LOGF36 Log Set (Fibre Split Oak), I44S4432BL Surround (Black), IDV36RLT Refractory Brick Liner (Traditional).

Unit Illustrated: IDV34N Direct Vent Insert (Natural Gas), MQ34CV4PFBL Clean View – Picture Frame (Black), MQ34SF1BL Door Frame (Black), MQRSP8 Glass Support Platform, MQG5A Decorative Ember Glass (Cobalt Blue), IDV33PRL Porcelain Reflective Liner.

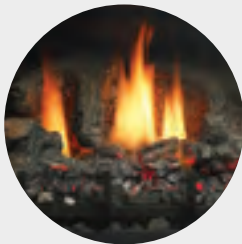
CAPRI ACCESSORIES

DESIGNER
DOORS & FRAMES
REQUIRED FOR MQ34CV3,
MQ34CV4PF AND MQ44CV3

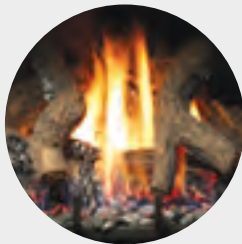
LOG SETS



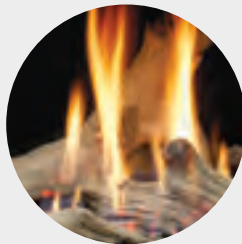
MQLOGF34
Fiber Split Oak
(for IDV34/44)



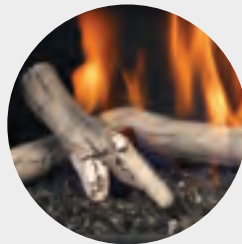
LOGF35
Fiber Split Oak
(for IDV34)



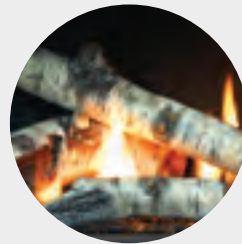
LOGF36
Fiber Split Oak
(for IDV44)



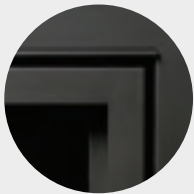
MQLOGF33
MQLOGF453
Driftwood
(MQRSP11 required)



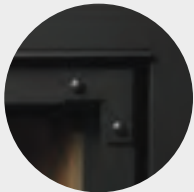
MQRBD4
Driftwood
(MQRSP11 and 15 lbs
Glass Media required)



MQRBRW
Birch
(MQRSP11 and 15 lbs
Glass Media required)



Designer Frame



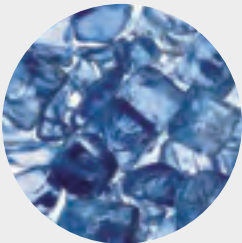
Designer Door

MEDIA OPTIONS

REQUIRES GLASS SUPPORT PLATFORM (MQRSP8) OR ROCK SUPPORT PLATFORM (MQRSP4)



MQG5ZG
Zircon Glacier
Ice Glass



MQG5A
Cobalt
Ember Glass



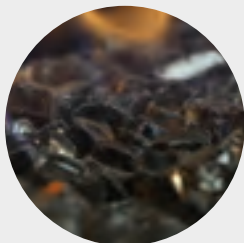
MQG5B
Black
Ember Glass



MQG5C
Bronze
Ember Glass



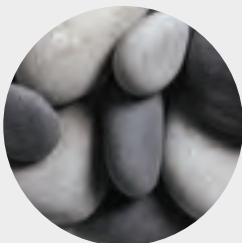
MQG5W
White
Ember Glass



MQEMBER
Ember
Chunks



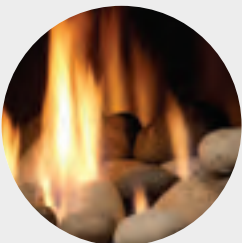
MQSTONE
Decorative
Stones



MQSTONE10
Decorative
Stones



MQROCK2
Natural
Rock Set

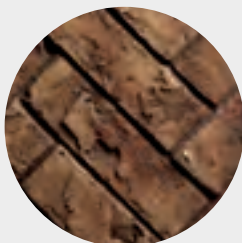


MQROCK3
Multi-Colored
Rock Set

LINERS



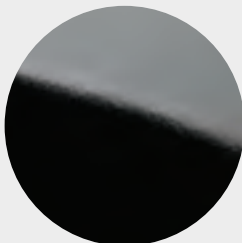
IDV33RL
IDV36RLT
Traditional Brick



IDV36RLH
Herringbone Brick
(IDV44 only)



MQ33RLF
MQ43RLF
Fluted



IDV33PRL
IDV36PRL
Porcelain Reflective

IDV34

IDV44

CLEAN VIEW KITS (REQUIRED) AND SURROUNDS (IF NEEDED)

Minimum Fireplace Opening	Width	Height	Depth
IDV34 with: I34CV1 / MQ34CV2 / MQ34CV3 / MQ34CV4PF	28 5/8"	21 1/2"	17 3/4"
IDV34 with: I34CV6BL	26 1/4"	21 3/8"	14 3/8"

Clean View Kits	Width	Height	Depth
I34CV1BL (Clean View)	35 1/4"	24 3/16"	13/16"
I34CV6BL (Clean View)	37 5/8"	26 15/16"	2 3/4"
MQ34CV2BL (Clean View)	35 5/8"	24 1 1/16"	1 3/4"

Clean View Kit – with Screen Door or Designer Frame	Width	Height	Depth
MQ34CV3BL (Clean View)*	37 1/8"	25 3/16"	1 7/16"
MQ34DD1BL (Designer Door – Series 1)			
MQ34SF1BL (Door Frame)			

*NOTE: When using an MQ34CV3BL a Designer Door or Door Frame is required.

Clean View Picture Frame	Width	Height	Depth
MQ34CV4PFBL (Clean View)*	37 1/8"	27 3/8"	1 7/16"
MQ34DD1BL (Designer Door – Series 1)			
MQ34SF1BL (Door Frame)			

*NOTE: When using an MQ34CV4PFBL a Designer Door or Door Frame is required.

Surrounds	Width	Height
I34S3927BL (Surround)	39"	27 5/16"
I34SPF4131BL (Surround Picture Frame)	41 1/8"	31 3/8"
I34SU4541BL (Surround Universal)*	45"	41"

*Trim to Size

Minimum Fireplace Opening	Width	Height	Depth
IDV44	32 7/8"	25 3/4"	18"

Clean View Kits	Width	Height	Depth
I44CV1BL (Clean View)	39 9/16"	28 1/2"	13/16"
MQ44CV2BL (Clean View)	39 5/8"	29 1/16"	1 3/4"

Clean View Kit – with Screen Door or Designer Frame	Width	Height	Depth
MQ44CV3BL (Clean View)*	41 7/16"	29 1/8"	1 7/16"
MQ44DD1BL (Designer Door – Series 1)			
MQ44SF1BL (Door Frame)			

*NOTE: When using an MQ44CV3BL a Designer Door or Door Frame is required.

Surrounds	Width	Height
I44S4432BL (Surround)	44"	32 1/16"
I44SPF4436BL (Surround Picture Frame)	44"	36"
I44SU4742BL (Surround Universal)*	47"	42"

*Trim to Size

VENTING

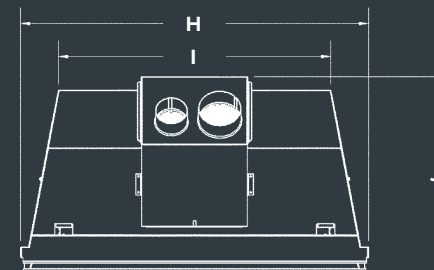
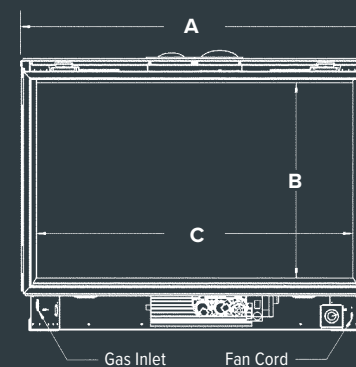
IDVVT36	Vertical Vent Termination	IDVVT43	Vertical Vent Termination
IDVFK25	Flex Pipe Kit	I43FK25	Flex Pipe Kit
IDVLCF	Block Off Plate – for Lower Chase	I43LCP	Block Off Plate – for Lower Chase
ZDV3FC	Flex Connector 3" Diameter	ZDV3FC	Flex Connector 3" Diameter
		ZDV4FC	Flex Connector 4" Diameter

*MG Duravent (Order Kit #46DVA-CL33)

*MG Duravent (Order Kit #46DVA-CL34)

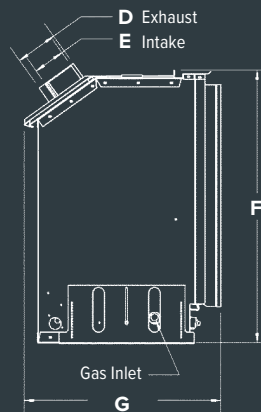
CAPRI PRODUCT DIMENSIONS

FRONT VIEW



TOP VIEW

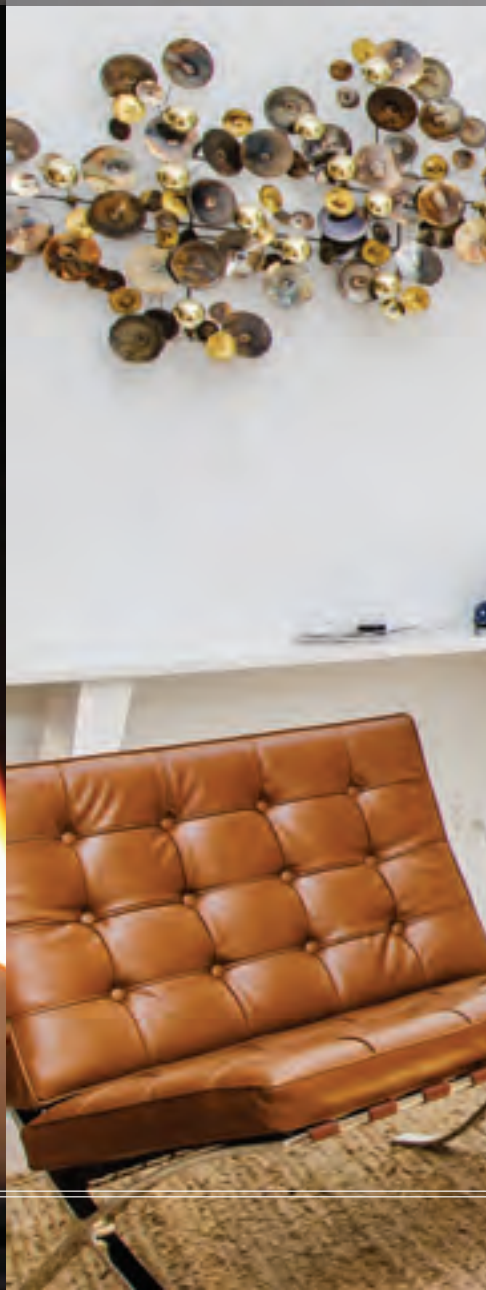
SIDE VIEW



	IDV34	IDV44
A	28 5/8"	32 7/8"
B	14 1/8"	18 3/8"
C	25 5/8"	29 7/8"
D	3"	4"
E	3"	3"
F	21 3/8"	25 3/4"
G	18 1/4"	18 9/16"
H	28 9/16"	32 7/8"
I	21 1/4"	25 3/4"
J	18 1/4"	18 9/16"



Unit Illustrated: IDV34N
Direct Vent Insert (Natural Gas), MQ34CV4PFBL Clean View (Picture Frame – Black), MQ34SF1BL Door Frame (Black), MQLOGF33 Driftwood Log Set, MQRSP11 Support Platform for Driftwood, IDV33PRL Porcelain Reflective Liner.



MULTI-SIDED FIREPLACES



GEMINI

ZERO CLEARANCE DIRECT VENT SEE-THROUGH
GAS FIREPLACE



Unit Illustrated: MDVL31N Multi-Sided Direct Vent Gas Fireplace – Natural Gas, M30SK See-Through Kit, MOROCK3 Contemporary Rock Collection – Multi-Colored, MQRSP7 Rock Support Platform, Z36CVCK Designer Clean View Circulating Kit (x2).

TWO SIDES, NO ARGUMENTS.

It's easy to agree on a fireplace when it's this spectacular! The multi-sided **GEMINI** is the perfect solution as a dramatic room divider or corner focal point in a great room. Build the hearth of your choice around this statement fireplace and you'll find yourself taking sides over which view is the best.

Unit Illustrated: MDVL31N Multi-Sided Direct Vent Gas Fireplace – Natural Gas, M30SK See-Through Kit, MQRCK2 Contemporary Rock Collection, MQRSP7 Rock Support Platform, Z36CVCK Designer Clean View Circulating Kit (x2).

STANDARD FEATURES

- Millivolt or IPI valve system allows operation during a power failure with Hi/low heat and flame adjustment
- A triple burner for use with our contemporary rock collection or log set
- Safety Screen Barrier



PF1
OR MV



GFRC,
MV OR PF1

OPTIONAL FEATURES

Designer Clean View Circulating Kit:

No Louvers Required *(Available as See-Through only, see manual for framing instructions)*

Grills:

Black

Fan Kit:

Heat activated with variable speed control

Brick Refractory Liners:

End Panel, Side Panel

Thermostat:

Wall Mount or Programmable Thermostat

Remote Control:

On/Off, Thermostat, Thermostat/Modulating or Thermostat/Modulating Fan

Log Set or Contemporary Rock Collection:

MQRSP7 Rock Support Platform required for rock collection

GEMINI ACCESSORIES

LOG SETS



LOGC31
Seven Piece Cast
Split Oak Log Set

MEDIA OPTIONS

REQUIRES ROCK SUPPORT PLATFORM (MQRSP7)



MQROCK2
Natural Rock Set



MQROCK3
Multi-Colored
Rock Set

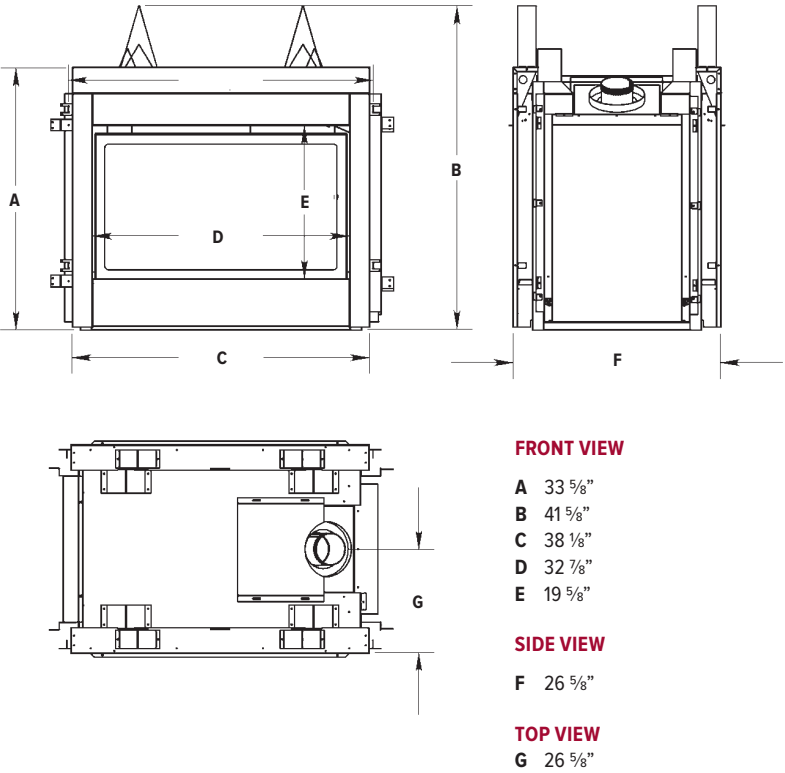


Unit Illustrated: MDVR31N Multi-Sided Direct Vent Fireplace in natural gas, LOGC31 Log Set (Seven Piece Cast Split Oak), M30CK Corner Kit, MGCKBL Grill Kit (Black), optional Refractory Liners MDV38RLE (End) and MDV38RLS (Side).

GEMINI PRODUCT DIMENSIONS

TOP FLUE MODEL	Height		Front Width		Depth	
	Actual	Framing	Actual	Framing	Actual	Framing
LOUVERS						
Corner	36 1/8"	37"	38 1/6"	48 1/2"	21 11/16"	27 1/4"
Penninsula	36 1/8"	37"	38 1/6"	48 1/2"	21 11/16"	20 5/8"
See-Through	36 1/8"	37"	48 1/8"	41 1/2"	21 11/16"	20 5/8"
CLEAN VIEW CIRCULATING KIT (CVCK)						
See-Through	41 5/8"	42 1/2"	38 1/8"	46 1/8"	26 5/8"	25 5/8"

Consult Manual for proper framing instructions in order to meet clearances to combustibles.



GEMINI PRODUCT SPECIFICATIONS

MODEL	MDV31N	MDV31LP	MDV31NE	MDV31LPE
Fuel	Natural Gas	Propane	Natural Gas	Propane
Input Max.	30,000 BTU	30,000 BTU	30,000 BTU	30,000 BTU
Input Min.	22,500 BTU	25,000 BTU	22,500 BTU	25,000 BTU
Glass Type	Tempered	Tempered	Tempered	Tempered
Bedroom Approved	Yes*	Yes*	Yes*	Yes*
FE (P.4.1-15)	60.94%	60.94%	63.27%	63.27%

*Must be installed with listed thermostat in Canada. Check local jurisdiction in USA. Louvered model only.



Unit Illustrated: MDV31N Multi-Sided Direct Vent Fireplace in Natural Gas, LOGC31 Log Set (Seven Piece Cast Split Oak), M30PK Peninsula Kit, MGPBBL Grill Kit (Black), Optional MDV38RLE Refractory Liner.

INFINITE

ZERO CLEARANCE DIRECT VENT GAS FIREPLACE



Unit Illustrated: MQRB4436N Infinite Linear Direct Vent Fireplace (Natural Gas), MQRB44BK Back Shield Kit (Single-Sided Viewing), MQRB4436PLB Porcelain Liner Back, MQRB5143PLE Porcelain Liner Ends.

INFINITE POSSIBILITIES.

A fabulously sleek stretch of dancing flames delivers **INFINITE** possibilities in this modern zero clearance gas fireplace.



Unit Illustrated: MQRB5143N Infinite Linear Direct Vent Fireplace (Natural Gas), MQRB51BK Single Side Kit, MQRB5143PLB Porcelain Back, MQRB5143PLE Porcelain Liner Ends, MQRB5019SB Surround Trim (Edge Black), MQRBRW Birch Log Set, MQSTONE10 Decorative Stones.



Unit Illustrated: MQRB5143N Infinite Linear Direct Vent Fireplace (Natural Gas), MQRB51SK See-Through Kit, MQRB5143PLE Porcelain Liner Ends, MQRB5019SSS Surround Trim (Edge Stainless Steel), MQG5A Glass Media Cobalt Blue.

STANDARD FEATURES

- SIT Valve with Hi/Lo Flame and BTU adjustment
- Millivolt or IPI valve system allows operation during a power failure with Hi/Low heat and flame adjustment
- Accent Lighting with Decorative (White) Glass Ember Bed
- Proflame II Models include Remote Control; features flame, thermostat, smart thermostat, accent lighting (MQRB4436NE2, MQRB4436LPE2, MQRB5143NE2, MQRB5143LPE2, MQRB6961NE2 and MQRB6961LPE2 Models only)

OPTIONAL FEATURES

Choose Your View:

Single-Sided or See-Through for your viewing pleasure

Choose Surround Trim Kit:

Black or Stainless; Available in two sizes – Frame and Edge

Liner:

Porcelain Reflective or Fluted

Media Options:

Contemporary Rocks, Decorative Stones, Decorative Ember Glass (Glacier Ice, Cobalt Blue, Black, Bronze, White), Ember Chunks or Multi-Colored Cannonballs

Log Sets:

4 Piece Driftwood Set with 4 Rocks, 3 or 5 Piece Driftwood Set, 3 Piece Large Driftwood Set (5143/6961 Models only), or Birch Set.

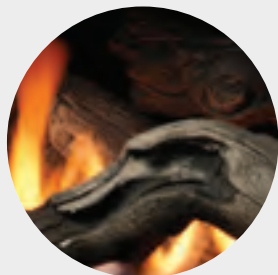
Fan Kit:

Heat activated with variable speed control (for Single-Sided Installation only)

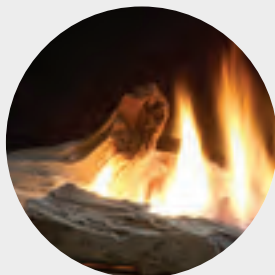


INFINITE ACCESSORIES

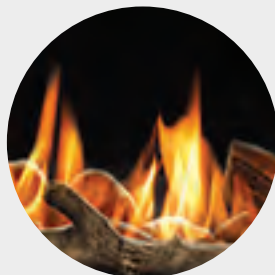
LOG SETS



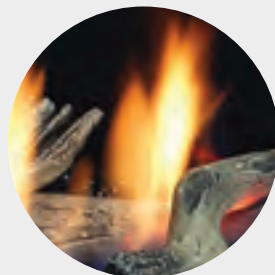
MQ46D
3-Piece Large
Driftwood Set
(5143/6961
Models only)



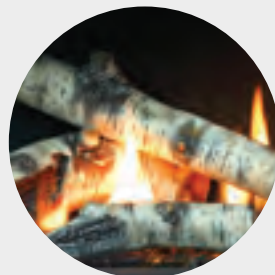
MQRBD1
4-Piece
Driftwood Set
with 4 Rocks



MQRBD2
3-Piece
Driftwood
Log Set



MQRBD3 (5-Piece)
or MQRBD4 (3-Piece)
Driftwood Set

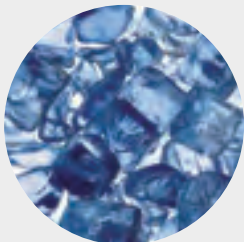


MQRBRW
Birch Set

MEDIA OPTIONS



MQG5ZG
Zircon Glacier
Ice Glass



MQG5A
Cobalt
Ember Glass



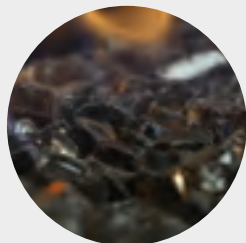
MQG5B
Black
Ember Glass



MQG5C
Bronze
Ember Glass



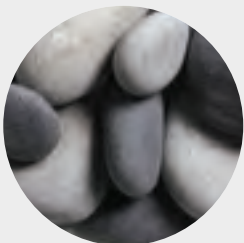
MQG5W
White
Ember Glass



MQEMBER
Ember
Chunks



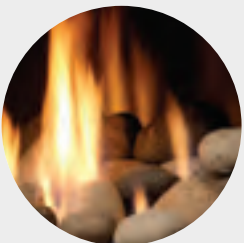
MQSTONE
Decorative
Stones



MQSTONE10
Decorative
Stones

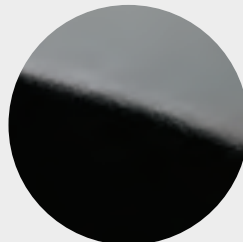


MQROCK2
Natural
Rock Set



MQROCK3
Multi-Colored
Rock Set

LINERS



Porcelain
Reflective



Fluted

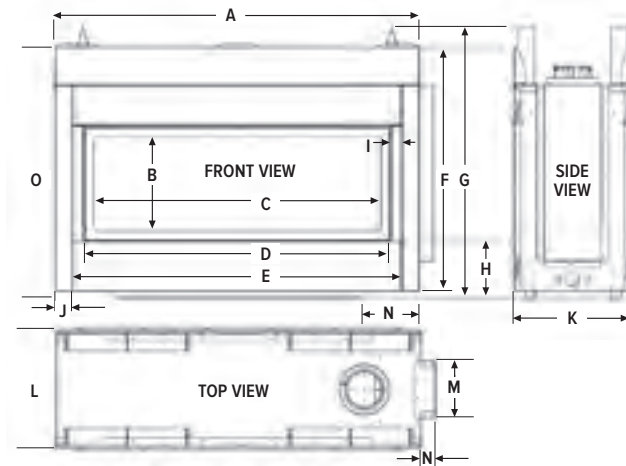


INFINITE PRODUCT SPECIFICATIONS

MODEL	MQRB4436N/NE MQRB4436NE2	MQRB4436LP/LPE MQRB4436LPE2	MQRB5143N/NE MQRB5143NE2	MQRB5143LP/LPE MQRB5143LPE2	MQRB6961N/NE MQRB6961NE2	MQRB6961LP/LPE MQRB6961LPE2
Fuel	Natural Gas	Propane	Natural Gas	Propane	Natural Gas	Propane
Gas Control	Millivolt	Millivolt	Millivolt	Millivolt	Millivolt	Millivolt
Input Max.	31,500 BTU	31,000 BTU	38,500 BTU	38,000 BTU	59,000 BTU	58,500 BTU
Input Min.	22,500 BTU	23,000 BTU	22,500 BTU	29,500 BTU	42,500 BTU	46,000 BTU
Glass Window	Ceramic	Ceramic	Ceramic	Ceramic	Ceramic	Ceramic
Glass Size	35"W x 15 1/4"H	35"W x 15 1/4"H	42"W x 15 1/4"H	42"W x 15 1/4"H	60"W x 15 1/4"H	60"W x 15 1/4"H
FE (P.4.1-15)	53.19% / 54.87%	53.19% / 54.87%	58.71% / 59.94%	58.71% / 59.94%	52.42% / 53.21%	52.42% / 53.21%
Venting	5" / 7" Kingsman Flex Vent	5" / 7" Kingsman Flex Vent	5" / 7" Kingsman Flex Vent / 5" / 8" Hard Pipe*	5" / 7" Kingsman Flex Vent / 5" / 8" Hard Pipe*	7" / 10" Kingsman Flex Vent	7" / 10" Kingsman Flex Vent

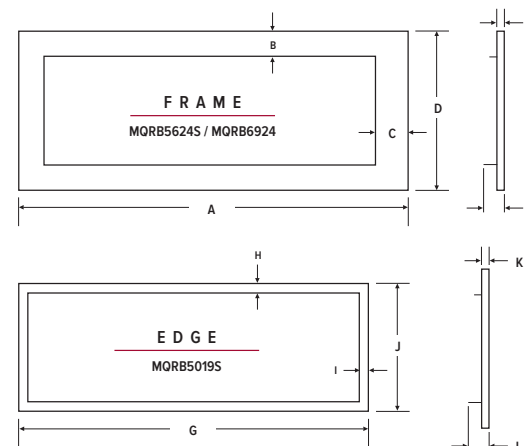
*With adapter.

INFINITE PRODUCT DIMENSIONS



MQRB4436 MQRB5143 MQRB6961

A	44 1/8"	51 1/8"	69 1/8"
B	13 1/4"	13 1/4"	13 1/4"
C	33 1/8"	40 1/8"	58 1/8"
D	36 1/4"	43 1/4"	61 1/4"
E	39"	46"	64 1/8"
F	34"	34"	38"
G	37 5/8"	37 5/8"	45 3/8"
H	7 7/8"	7 7/8"	7 7/8"
I	1 1/2"	1 1/2"	1 1/2"
J	2 1/2"	2 1/2"	2 1/2"
K	16 1/2"	16 1/2"	20 1/2"
L	16 1/2"	16 1/2"	20 1/2"
M	8 1/8"	8 1/8"	12 1/8"
N	2"	2"	2 7/8"
O	35"	35"	39"



MQRB4436 MQRB5143 MQRB6961

A	49 7/8"	56 7/8"	74 7/8"
B	3 7/8"	3 7/8"	3 7/8"
C	4 3/8"	4 3/8"	4 3/8"
D	23 3/4"	23 3/4"	23 3/4"
E	1"	1"	1"
F	2 3/8"	2 3/8"	2 3/8"
G	44 1/8"	51 1/8"	69 1/8"
H	1 1/2"	1 1/2"	1 1/2"
I	1 1/2"	1 1/2"	1 1/2"
J	19 1/8"	19 1/8"	19 1/8"
K	1"	1"	1"
L	2 3/8"	2 3/8"	2 3/8"

Unit Illustrated: MQRB6961N Linear Multi-sided Direct Vent Fireplace (Natural Gas), MQRB69BK Back Shield Kit (for Single-Sided Viewing), MQRBD2 Driftwood Branches (3 Piece Set), MQROCK3 Rock Set (Contemporary Collection – Multi-Colored), MQEMBER Ember Chunks x2.

ATRIUM

ZERO CLEARANCE DIRECT VENT GAS FIREPLACE



Unit Illustrated: MCV42NH Peninsula Fireplace (Natural Gas), MP42GT Glass Tray, MQ65C Glass Media (Bronze x5), MQ42LOG1 Driftwood Log Set, MP42PL Porcelain Reflective Panel.

A VIEW FROM ALL ANGLES.

When the view is this good, you want to be able to see it from every angle. That's why the **ATRIUM** is an ideal 3-sided designer option to divide entertaining areas and create maximum impact and warmth. Our Peninsula can be customized with your choice of brick liner, driftwood, logs, ember glass or rocks.



Unit Illustrated: MCV42NH Peninsula Fireplace (Natural Gas), MP42GT Glass Tray, MQG5ZG Glass Media (Zircon Ice x5), MP42PL Porcelain Reflective Liner.



Unit Illustrated: MCV42NH Peninsula Fireplace (Natural Gas), MP42GT Glass Tray, MQG5C Glass Media (Bronze x5), MQSTONE Decorative Stones, MP42PL Porcelain Reflective Liner.



Unit Illustrated: MCV42NH Peninsula Fireplace (Natural Gas), MP42GT Glass Tray, MQG5C Glass Media (Bronze x5), MQROCK2 Rock Set (Contemporary Collection – Natural), MP42PL Porcelain Reflective Liner.

STANDARD FEATURES

- Dedicated Clean View appliance
- Millivolt or IPI valve system allows operation during a power failure with Hi/Low heat and flame adjustment
- Safety Screen Barrier

OPTIONAL FEATURES

Media Options (Glass Tray Required):

Contemporary Rocks, Decorative Stones, Decorative Ember Glass (Glacier Ice, Cobalt Blue, Black, Bronze, White), Ember Chunks or Multi-Colored Cannonballs

Accent lighting:

for use with glass tray

Log Sets (Log Grate or Glass Tray Required):

Two Driftwood Sets (6 or 8 Piece), Two Oak Sets (7 or 8 Piece)

Liners:

Porcelain Reflective or Traditional Brick

Thermostat:

Wall Mount Millivolt or Programmable

Remote Controls:

Thermostat on/off, Thermostat on/off modulating, Thermostat on/off modulating and light control



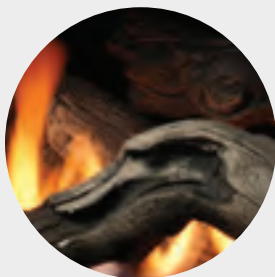
PF1
OR MV



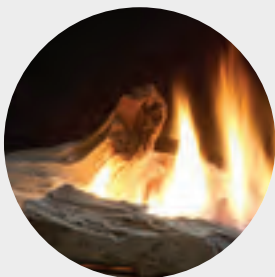
GFRC,
MV OR PF1

ATRIUM ACCESSORIES

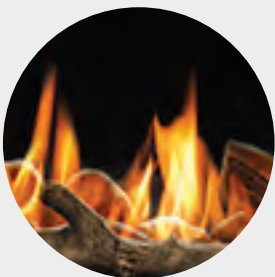
LOG SETS



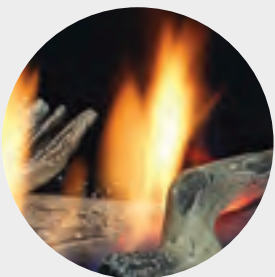
M42LOG4
8 Piece Oak
Log Set



MQ42LOG2
7 Piece Oak
Log Set



M42LOG3
6 Piece Oak
Driftwood Set



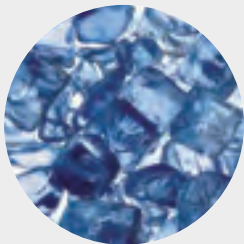
MQ42LOG1
8 Piece Oak
Driftwood Set

MEDIA OPTIONS

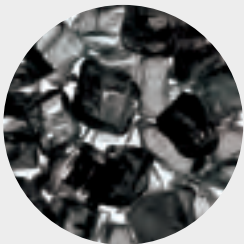
REQUIRES GLASS SUPPORT PLATFORM



MQG5ZG
Zircon Glacier
Ice Glass



MQG5A
Cobalt
Ember Glass



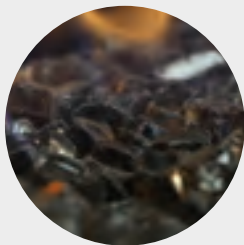
MQG5B
Black
Ember Glass



MQG5C
Bronze
Ember Glass



MQG5W
White
Ember Glass



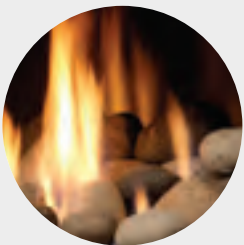
MQEMBER
Ember
Chunks



MQSTONE
Decorative
Stones



MQROCK2
Natural
Rock Set



MQROCK3
Multi-Colored
Rock Set

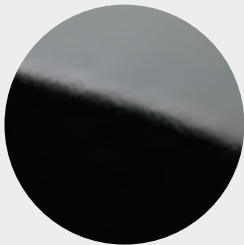


RBCB1
Multi-Colored
Cannonballs

LINERS



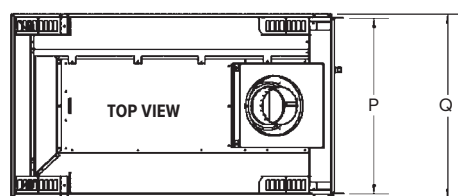
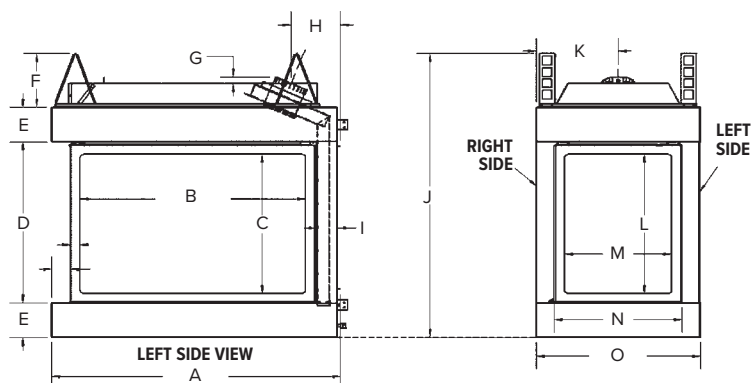
Traditional
Brick Liner



Porcelain
Reflective



ATRIUM PRODUCT DIMENSIONS



MQRB4436

A	43 1/16"	J	42 1/4"
B	33 1/16"	K	12 1/4"
C	20 5/8"	L	20 5/8"
D	23 15/16"	M	16"
E	5 3/16"	N	19"
F	8"	O	24 1/2"
G	1"	P	23 1/2"
H	7 3/8"	Q	24 1/2"
I	3"		

MODEL	Height		Front Width		Depth	
	Actual	Framing	Actual	Framing	Actual	Framing
MCVP42	42 1/4"	42 3/8"	43 1/16"	42 1/2"	24 1/2"	23 5/16"

ATRIUM PRODUCT SPECIFICATIONS

MODEL	MCVP42N MCVP42NE	MCVP42LP MCVP42LPE	MCVP42NH MCVP42NHE	MCVP42LPH MCVP42LPHE
Fuel	Natural Gas	Propane	Natural Gas	Propane
Gas Control	Millivolt / IPI	Millivolt / IPI	Millivolt / IPI	Millivolt / IPI
Input Max.	30,250 BTU	28,500 BTU	31,250 BTU	29,000 BTU
Input Min.	21,000 BTU	23,000 BTU	21,250 BTU	23,000 BTU
Glass Type	Tempered	Tempered	Ceramic	Ceramic
FE (P.4.1-15)	53% / 54.63%	53.82% / 55.32%	64.55% / 66.49%	65.66% / 67.42%



Unit Illustrated: MCVP42NH Peninsula Fireplace (Natural Gas), MP42GT Glass Tray, MQG5ZG Glass Media (Zircon Ice x2), MP42PL Porcelain Reflective Liner.



BENTLEY ST

ZERO CLEARANCE DIRECT VENT SEE-THROUGH
GAS FIREPLACE



Unit Illustrated: Model MCVST42NH See-Through Fireplace (Natural Gas), M42LG Log Grate, MQ42LOG2 Oak Log Set, MST42RLT Traditional Brick Liner, MQ42DD2BL Designer Door Series 2.

TWO SIDES TO THIS STORY.

With an expansive glass viewing area and clever designer options, we thought the Bentley was pure designer perfection. Now, we've introduced the see-through **BENTLEY ST** which means you get the same view... twice!

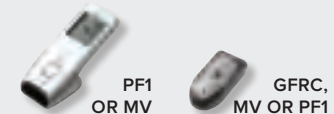
Being able to enjoy the beauty and warmth from both sides means we've doubled the reasons to love the **BENTLEY ST**.



Unit Illustrated: Model MCVST42NH
See-Through Fireplace (Natural Gas),
M42LG Log Grate, MQ42LOG2 Oak Log
Set, MST42RLT Traditional Brick Liner,
MQ42DD2BL Designer Door Series 2.

STANDARD FEATURES

- Dedicated Clean View appliance
- Millivolt or IPI valve system allows operation during a power failure with Hi/Low heat and flame adjustment
- Safety Screen Barrier



OPTIONAL FEATURES

Fan Kit:

Heat activated with variable speed control

Designer Doors:

3 styles – Arch, Straight Black (2 options)

Surrounds:

Hearth Mount 4" Wide
(Covers 44 5/8" W x 38 1/8" H)
Picture Frame 4" Wide
(Covers 44 5/8" W x 40 1/8" H)
Picture Frame 1 5/8" Wide
(Covers 40 1/8" W x 35 5/8" H)

Liners:

Porcelain Reflective or Traditional Brick

Glass Tray:

Contemporary Rocks (2 options), Driftwood Set, Decorative Stones, Decorative Ember Glass (Glacier Ice, Cobalt Blue, Black, Bronze, White), Ember Chunks or Multi-Colored Cannonballs

Accent Lighting:

for use with the Glass Tray

Log Sets:

Two Driftwood Sets (6 or 8 Piece), Two Oak Sets (7 or 8 Piece)

Remotes Controls:

Thermostat on/off, Thermostat on/off modulating, Thermostat on/off modulating and fan/light control

Thermostats:

Wall Mount or Programmable

BENTLEY ST VARIATIONS



Unit Illustrated: Model MCVST42NH See-Through Fireplace – Natural Gas, MST42GT Glass Tray, MQG5C Glass Media – Bronze x (5), MQSTONE Decorative Stones, MST42PL Porcelain Liner.





MCVST42NH See-Through Fireplace (Natural Gas), ZCV42S1BL Surround (Hearth Mount 4" Wide), MST42GT Glass Tray, MQG5C Glass Media (Bronze x5), MOROCK2 Rock Set – Contemporary Collection (Natural), MST42PL Porcelain Liner.



MCVST42NH See-Through Fireplace (Natural Gas), ZCV42S1PFBLL Surround (Picture Frame 4" Wide), MST42GT Glass Tray, MQG5C Glass Media (Bronze x5), RBCB1 Cannonballs, MST42PL Porcelain Liner.



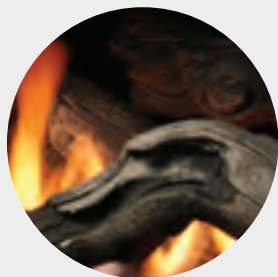
MCVST42NH See-Through Fireplace (Natural Gas), ZCV42S2PFBLL Surround (Picture Frame 1 5/8" Wide), MST42GT Glass Tray, MQG5ZG Glass Media (Zircon Ice x2), MST42PL Porcelain Liner.



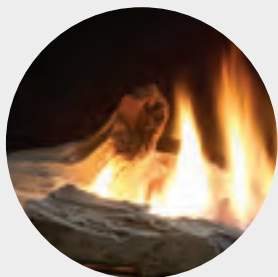
MCVST42NH See-Through Fireplace (Natural Gas), ZCV42S1PFBLL Surround (Picture Frame 4" Wide), MST42GT Glass Tray, MQG5ZG Glass Media (Zircon Ice x5), MST42PL Porcelain Liner.

BENTLEY ST ACCESSORIES

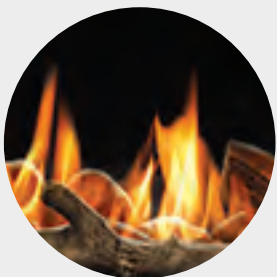
LOG SETS



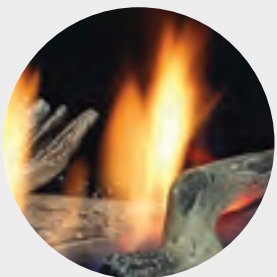
M42LOG4
8 Piece Oak
Log Set



MQ42LOG2
7 Piece Oak
Log Set



M42LOG3
6 Piece Oak
Driftwood Set



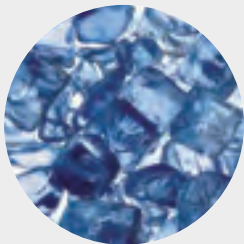
MQ42LOG1
8 Piece Oak
Driftwood Set

MEDIA OPTIONS

REQUIRES GLASS SUPPORT PLATFORM



MQG5ZG
Zircon Glacier
Ice Glass



MQG5A
Cobalt
Ember Glass



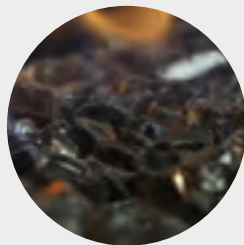
MQG5B
Black
Ember Glass



MQG5C
Bronze
Ember Glass



MQG5W
White
Ember Glass



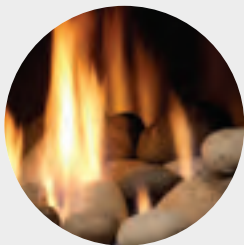
MQEMBER
Ember
Chunks



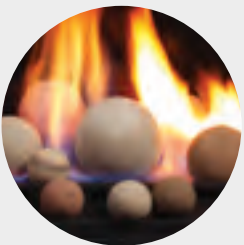
MQSTONE
Decorative
Stones



MQROCK2
Natural
Rock Set



MQROCK3
Multi-Colored
Rock Set



RBCB1
Multi-Colored
Cannonballs

DESIGNER DOORS

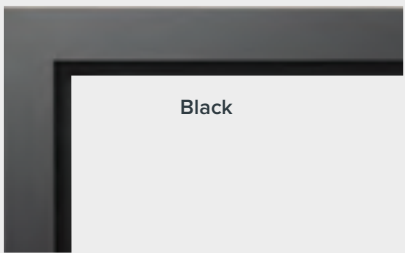


DD1

DD2

DD3

WALL SURROUND



Black

LINERS

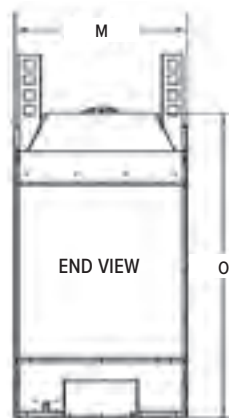
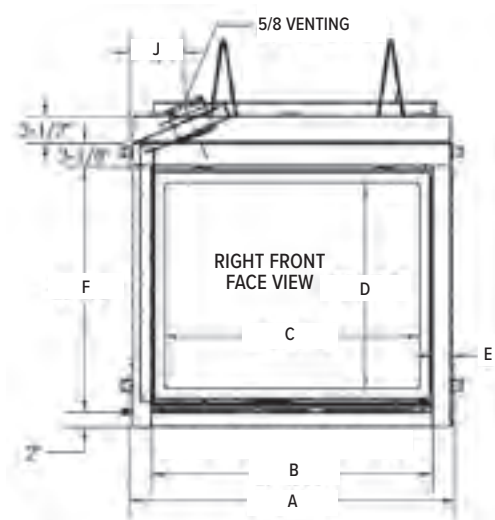


Traditional
Brick Liner



Porcelain
Reflective

BENTLEY ST PRODUCT DIMENSIONS



MCVST42

- A 43 1/16"
- B 37 1/16"
- C 33 1/16"
- D 27 3/16"
- E 2 1/2"
- F 32 1/2"
- G 2"
- H 3 1/8"
- I 3 1/2"
- J 7 1/4"
- K 23 1/8"
- L 24 1/4"
- M 24 1/4"
- N 51 1/4"
- O 42 7/8"

MODEL	Height		Front Width		Depth	
	Actual	Framing	Actual	Framing	Actual	Framing
MCVST42	51 1/4"	51 3/8"	43 1/16"	43 1/8"	24 1/4"	23 1/16"

BENTLEY ST PRODUCT SPECIFICATIONS

MODEL	MCVST42N MCVST42NE	MCVST42LP MCVST42LPE	MCVST42NH MCVST42NHE	MCVST42LPH MCVST42LPHE
Fuel	Natural Gas	Propane	Natural Gas	Propane
Gas Control	Millivolt / IPI	Millivolt / IPI	Millivolt / IPI	Millivolt / IPI
Input Max.	30,250 BTU	29,000 BTU	31,000 BTU	29,250 BTU
Input Min.	20,750 BTU	23,000 BTU	21,000 BTU	23,000 BTU
Glass Type	Tempered	Tempered	Ceramic	Ceramic
FE (P.4.1-15)	57.56% / 59.55%	58.56% / 55.32%	66.45% / 68.58%	67.88% / 70.36%



Unit Illustrated: Model MCVST42NH See-Through Fireplace – Natural Gas, MST42GT Glass Tray, MQG5C Glass Media – Bronze x(5), MQ42LOG1 Driftwood Log Set, MST42PL Porcelain Reflective Liner, ZCV42S1PFBL Surround – Picture Frame 4" Wide.

ENCLAVE

ZERO CLEARANCE DIRECT VENT BAY PENINSULA
GAS FIREPLACE



Unit Illustrated: Model MQVLBG60NE2 Bay Peninsula Direct Vent Fireplace (Natural Gas), MQG5C Glass Media (Bronze x3), VL60PLB Porcelain Reflective Liner. (Chase must be vented below and above appliance – consult manual for instructions).

CREATING A NEW DIMENSION.

Its wraparound view captivates from every angle. Luring you in with its three-dimensional sightlines, the **ENCLAVE** creates a sleek and cleverly designed gathering point for the heart of your home.

Amazingly versatile, this beguiling fireplace adapts to suit any room with options for a Single Side, Corner or a Bay Peninsula. It transforms completely with your choice of fireplace liner and accessories that range from driftwood logs and contemporary rocks to cannonballs and glass.

With the **ENCLAVE'S** innovative vented chase technology you may now cover the fireplace with combustible materials up to the glass door opening.

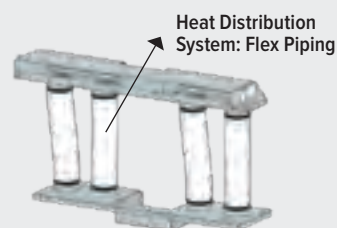


Unit Illustrated: Model MQVLBG48NE2 Bay Peninsula Direct Vent Fireplace (Natural Gas), VLBGCK Corner Kit, MQG5C Glass Media (Bronze x2), MQSTONE Decorative Stones. (Chase must be vented below and above appliance – consult manual for instructions).

STANDARD FEATURES

- LED Accent Lighting*
- Proflame II Models include Remote Control with the following features: flame adjustment, thermostat, smart thermostat and accent lighting control
- Zero Clearances to TVs and Artwork
- Invisible Glass Safety Barrier

**non-dimmable*



OPTIONAL FEATURES

Surround:

Black or Stainless; Single-Sided Models only

Liner:

Porcelain Reflective, Reflective Glass, Fluted Brick, or Stacked Brick

Media Options (Required):

Glass Media (Glacier Ice, Cobalt Blue, Black, Bronze, White)

Additional Media (Optional):

Cannonballs, Decorative Stones, Contemporary Rocks (natural and multi-colored), Ember Chunks.

Log Sets:

4 Piece Driftwood Set with 4 Rocks, 3 or 5 Piece Driftwood Set, 3 Piece Large Driftwood Set, 6 Piece Driftwood Set, or Birch Set.

Enclosure Grill:

Unfinished

Corner Kit:

Available for Bay Peninsula Unit

Side Extension Panels:

Black; Single-Sided Models only

Heat Distribution System:

Plenum (Enclave 48 only)

ENCLAVE 48



Unit Illustrated: Model MQVLBG48NE2 Bay Peninsula Direct Vent Fireplace (Natural Gas), VL48EG Grill Kit for Enclosure, MORBRW Birch Log Set, MQG5C Glass Media (Bronze x2), MQSTONE10 Decorative Stones, MQVL48RGB Reflective Glass Liner (Black). (Chase must be vented below and above appliance – consult manual for instructions).



ADDITIONAL ENCLAVE 48 STYLES



MQVLBG48NE2 Bay Peninsula Direct Vent Fireplace (Natural Gas), VLBGCK Corner Kit, MQG5C Glass Media (Bronze x2), MQRBD3 Driftwood Log Set.



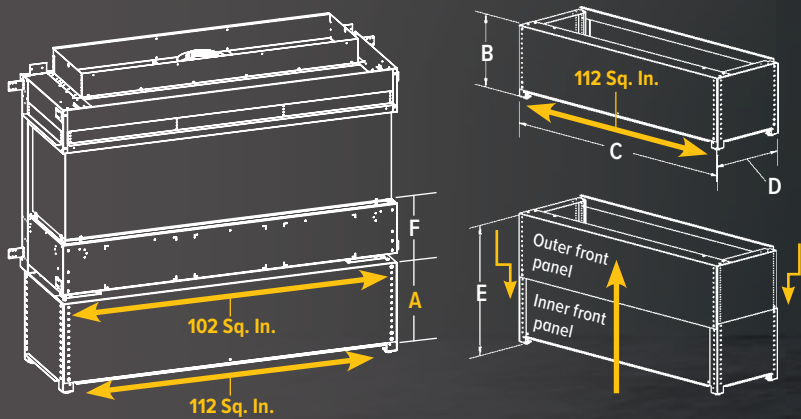
MQVLBG48NE2 Direct Vent Fireplace (Natural Gas), VLBGCK Corner Kit, MQG5C Glass Media (Bronze x2), MQ46D Driftwood Log Set.



MQVLBG48NE2 Direct Vent Fireplace (Natural Gas), MQG5C Glass Media (Bronze x2), MQVL48RFB2 Liner (back - Fluted)

ENCLAVE 48 ADJUSTABLE VENTED PLATFORMS

Save on framing and adjust platform to your required height. Height is variable from 14 3/16" to 27 1/4". Ventilation Slots are provided at the bottom and between the fireplace and the platform. Note: Bottom of fireplace to glass measures 9 3/4"



VL48AVP

A	14 3/16" to 27 1/4"
B	14 13/16"
C	56"
D	17 1/8"
E	27 1/8"
F	9 3/4"

*NOTE: the fireplace chase must be vented both above and below appliance.

Unit Illustrated: Model MQVL48NE2 Direct Vent Fireplace (Natural Gas), VL48EG Grill Kit for Enclosure, MQG5W Glass Media (White x2), MQVL48RGB Reflective Glass Liner (Black), MQVL48S1BL Surround (Black). (Chase must be vented below and above appliance – consult manual for instructions).

Room air coming IN
Hot air coming OUT

Your choice of enclosure grill (front or sides) or top opening is required

Use any finish (including combustibles) right to the edge of the fireplace door opening

Design your own chase vent solution to suit your style*

ENCLAVE 48 PRODUCT SPECIFICATIONS

MODEL	MQVLBG48NE2	MQVLBG48LPE2	MQVL48NE2	MQVL48LPE2
Type	BAY PENINSULA	BAY PENINSULA	SINGLE-SIDED	SINGE-SIDED
Fuel	Natural	Propane	Natural	Propane
Gas Control	IPI PF2	IPI PF2	IPI PF2	IPI PF2
Input Max.	35,000 BTU	35,000 BTU	35,000 BTU	35,000 BTU
Input Min.	25,000 BTU	27,000 BTU	25,000 BTU	27,000 BTU
Venting*	5/8"	5/8"	5/8"	5/8"
Glass Size	49 1/16" W x 17 7/8" H	49 1/16" W x 17 7/8" H	48" W x 17 7/8" H	48" W x 17 7/8" H
Glass Type	Ceramic	Ceramic	Ceramic	Ceramic
FE (P.4.1-15)	53.20%	53.20%	53.20%	53.20%

Ventilation Required:

THE FIREPLACE CHASE MUST BE VENTED BOTH ABOVE AND BELOW APPLIANCE**

ABOVE the appliance:
151 sq./in.

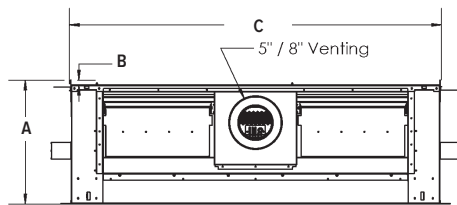
BELOW the appliance:
84 sq./in.

*This appliance is approved for use with 5/8" Kingsman Flex, M&G-DuraVent Direct Vent system (Model DV-GS Series) and Snorkel, BDM Pro Form Direct Vent, Ameri-Vent Direct Vent Pipe System, ICC Excel Direct, Metal Fab Sure-Seal DV and Selkirk Direct Temp. When using ICC Excel Direct a one-foot section of 5/8" MG DuraVent must be used as a starter collar at the flue of the appliance.

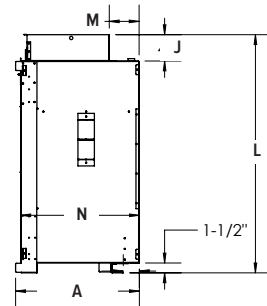
**Consult Installation Manual for further clarification.

PRODUCT DIMENSIONS

TOP VIEW



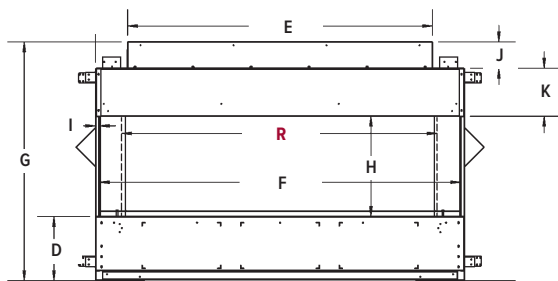
SIDE VIEW – SINGLE SIDED



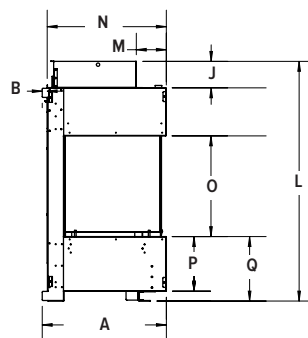
MQVL48

- A 18 13/16"
- B 3/4"
- C 56 1/2"
- D 9 3/4"
- E 46 3/8"
- F 54 15/16"
- G 36 5/16"
- H 15 1/4"
- I 9/16"
- J 4"
- K 7 5/16"
- L 36 1/4"
- M 4 9/16"
- N 18"
- O 15 1/4"
- P 8 1/4"
- Q 9 3/4"
- R 48"

FRONT VIEW

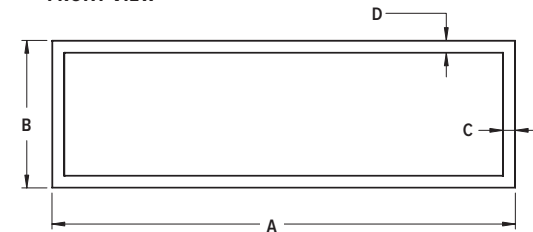


SIDE VIEW – BAY PENINSULA



WALL SURROUND

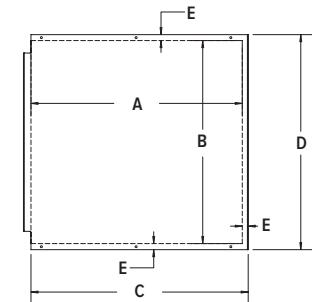
FRONT VIEW



MQVL48S1

- A 58 1/16"
- B 18 1/2"
- C 1 1/2"
- D 1 1/2"

SIDE EXTENSION PANELS

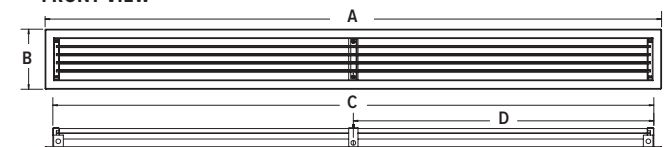


VL48SEP

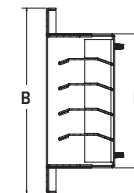
- A 17 7/8"
- B 17 1/8"
- C 18 3/8"
- D 18 3/16"
- E 1/2"

FRONT ENCLOSURE GRILL

FRONT VIEW



SIDE VIEW

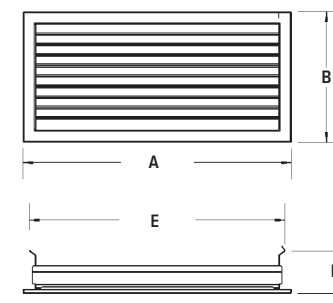


VL48EG

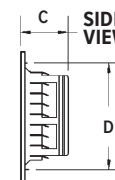
- A 49 3/4"
- B 4 13/16"
- C 48 1/2"
- D 24 1/4"
- E 3 1/2"

SIDE ENCLOSURE GRILL (PAIR)

FRONT VIEW



SIDE VIEW



VL60EGS

- A 16 3/16"
- B 7 7/8"
- C 2 7/8"
- D 6 7/16"
- E 15 7/16"
- F 2 9/16"

ENCLAVE 60



Unit Illustrated: Model MQVLBG60NE2 Bay Peninsula Direct Vent Fireplace (Natural Gas), VL60EG Grill Kit for Enclosure, MQG5C Glass Media (Bronze x3), MOVL60RLSB Liner (Back – Stacked Brick). (Chase must be vented below and above appliance – consult manual for instructions).

Unit Illustrated: Model MQVLBG60NE2 Bay Peninsula Direct Vent Fireplace (Natural Gas), MQG5C Glass Media (Bronze x3), MQLOGF48D Driftwood Log Set, MQSTONE10 Decorative Stone, MQVL60RLSB Brick Liner (Stacked Brick).
(Chase must be vented below and above appliance – consult manual for instructions).



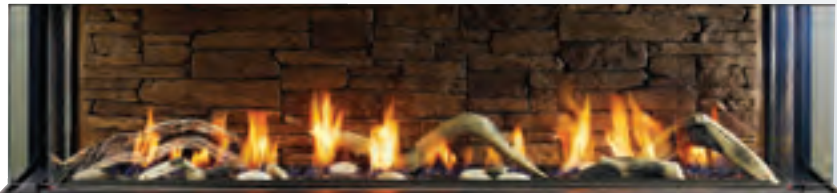
ADDITIONAL ENCLAVE 60 STYLES



MQVLBG60NE2 Bay Peninsula Direct Vent Fireplace (Natural Gas), MQG5C Glass Media (Bronze x 3), MQLOGF48D Driftwood Log Set, MQSTONE10 Decorative Stone (10 PCE), MQVL60RLSB Stacked Brick Liner.



MQVLBG60NE2 Bay Peninsula Direct Vent Fireplace (Natural Gas), MQG5C Glass Media (Bronze x3), Porcelain Reflective Liner.



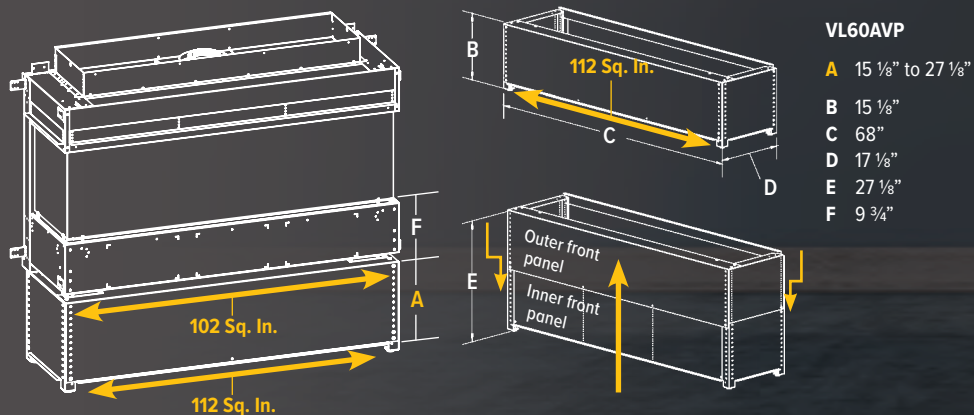
MQVLBG60NE2 Bay Peninsula Direct Vent Fireplace (Natural Gas), MQG5C Glass Media (Bronze x 3), MQRBD3 Driftwood Log Set (5 PCE), MQSTONE10 Decorative Stones (10 PCE), MQVL60RLSB Stacked Brick Liner.

ENCLAVE 60 ADJUSTABLE VENTED PLATFORMS

Save on framing and adjust platform to your required height. Height is variable from 15 $\frac{1}{8}$ " to 27 $\frac{1}{8}$ ".

Ventilation Slots are provided at the bottom and between the fireplace and the platform.

Note: Bottom of fireplace to glass measures 9 $\frac{3}{4}$ "



*NOTE: the fireplace chase must be vented both above and below appliance.

Unit Illustrated: Model MQVL60NE2 Direct Vent Fireplace (Natural Gas), MQG5C Glass Media (Bronze x3), RBCB1 Cannonballs. (Chase must be vented below and above appliance – consult manual for instructions).

Room air coming **IN**
Hot air coming **OUT**

Zero clearances
to TVs and artwork

Use any finish
(including
combustibles)
right to the edge
of the fireplace
door opening

Design your own
chase vent solution
to suit your style

ENCLAVE 60 PRODUCT SPECIFICATIONS

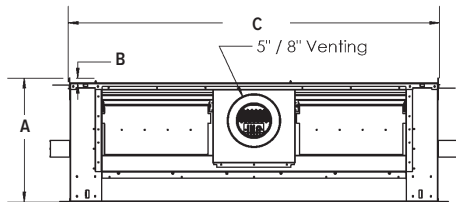
MODEL	MQVLBG60NE2	MQVLBG60LPE2	MQVL60NE2	MQVL60LPE2
Type	BAY PENINSULA	BAY PENINSULA	SINGLE-SIDED	SINGE-SIDED
Fuel	Natural	Propane	Natural	Propane
Gas Control	IPI PF2	IPI PF2	IPI PF2	IPI PF2
Input Max.	45,000 BTU	44,000 BTU	45,000 BTU	44,000 BTU
Input Min.	32,000 BTU	35,000 BTU	32,000 BTU	35,000 BTU
Venting*	5/8"	5/8"	5/8"	5/8"
Glass Size	61 1/32" W x 17 7/8" H	61 1/32" W x 17 7/8" H	61 1/32" W x 17 7/8" H	61 1/32" W x 17 7/8" H
Glass Type	Ceramic	Ceramic	Ceramic	Ceramic
FE (P.4.1-15)	56.18%	56.52%	56.18%	56.52%

*This appliance is approved for use with 5/8" Kingsman Flex, M&G-DuraVent Direct Vent system (Model DV-GS Series) and Snorkel, BDM Pro Form Direct Vent, Ameri-Vent Direct Vent Pipe System, ICC Excel Direct, Metal Fab Sure-Seal DV and Selkirk Direct Temp. When using ICC Excel Direct a one-foot section of 5/8" MG DuraVent must be used as a starter collar at the flue of the appliance.

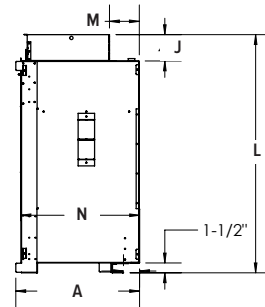
**Consult Installation Manual for further clarification.

PRODUCT DIMENSIONS

TOP VIEW



SIDE VIEW – SINGLE SIDED



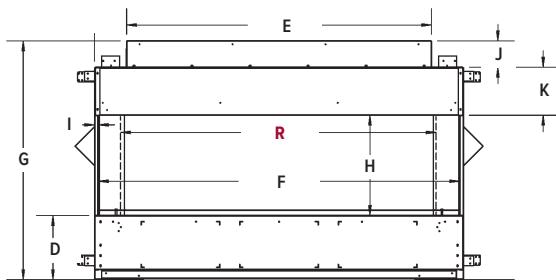
MQVL60
Single Side

A	20 1/16"
B	2"
C	68 1/2"
D	9 3/4"
E	58 1/2"
F	66 1/16"
G	36 5/16"
H	15 1/4"
I	1 1/16"
J	4"
K	7 5/16"
L	36 5/16"
M	4 9/16"
N	18"
O	15 1/4"
P	8 1/4"
Q	9 3/4"
R	60"

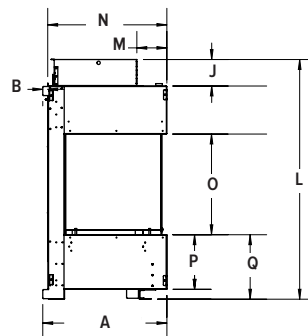
MQVLBG60
Bay Peninsula

A	20 1/16"
B	2"
C	68 1/2"
D	9 3/4"
E	58 1/2"
F	66 1/16"
G	36 5/16"
H	15 1/4"
I	1 1/16"
J	4"
K	7 5/16"
L	36 5/16"
M	4 9/16"
N	18"
O	15 1/4"
P	8 1/4"
Q	9 3/4"
R	60 3/4"

FRONT VIEW



SIDE VIEW – BAY PENINSULA



Ventilation Required:

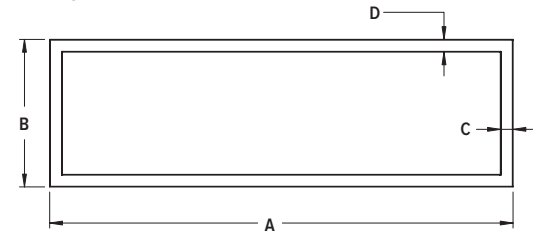
THE FIREPLACE CHASE MUST BE VENTED BOTH ABOVE AND BELOW APPLIANCE**

ABOVE the appliance:
200 sq./in.

BELOW the appliance:
102 sq./in.

WALL SURROUND

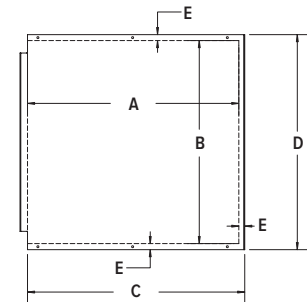
FRONT VIEW



MQVL60S1

A	70 1/16"
B	18 1/2"
C	1 1/2"
D	1 1/2"

SIDE
EXTENSION
PANELS

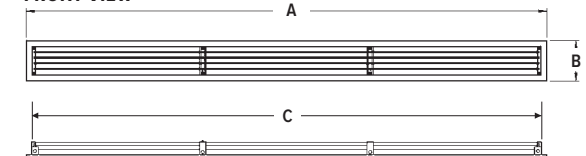


VL48SEP

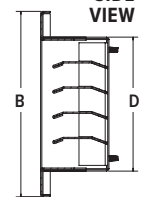
A	17 7/8"
B	17 1/8"
C	18 3/8"
D	18 3/16"
E	1/2"

FRONT ENCLOSURE GRILL – VL60EG

FRONT VIEW



SIDE
VIEW

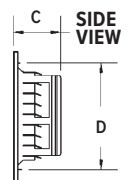
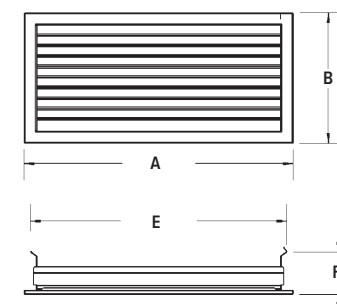


VL60EG

A	61 3/4"
B	4 7/8"
C	60 1/2"
D	3 5/8"

SIDE
ENCLOSURE
GRILL – VL60EGS

FRONT VIEW

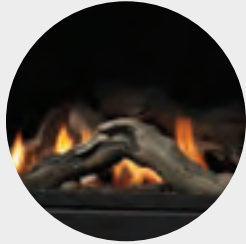


VL60EGS

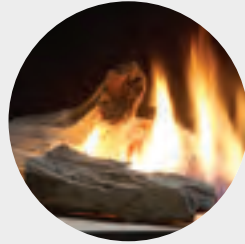
A	16 3/16"
B	7 7/8"
C	2 7/8"
D	6 7/16"
E	15 7/16"
F	2 9/16"

ENCLAVE ACCESSORIES

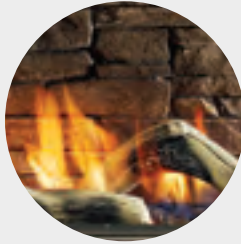
LOG SETS



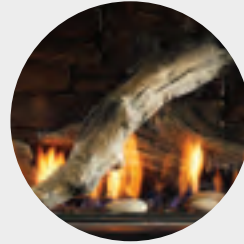
MQ46D
3-Piece
Driftwood Set



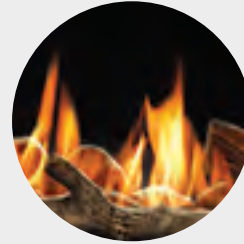
MQRBD1
4-Piece
Driftwood Set
with 4 Rocks



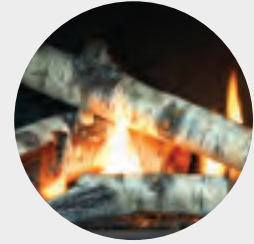
MQRBD3 (5-Piece)
or MQRBD4 (3-Piece)
Driftwood Set



MQLOGF48D
6-Piece
Driftwood Set

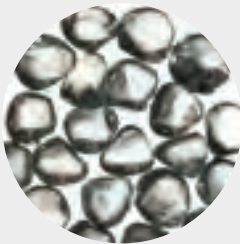


MQRBD2
3-Piece
Driftwood Set

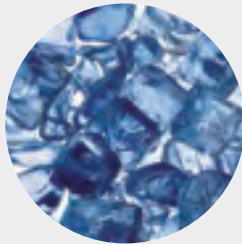


MQRBRW
5-Piece
Birch Log Set

MEDIA OPTIONS



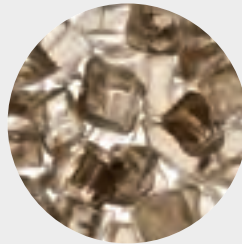
MQG5ZG
Zircon Glacier
Ice Glass



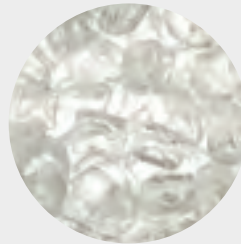
MQG5A
Cobalt
Ember Glass



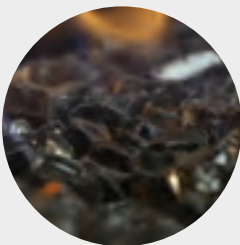
MQG5B
Black
Ember Glass



MQG5C
Bronze
Ember Glass



MQG5W
White
Ember Glass



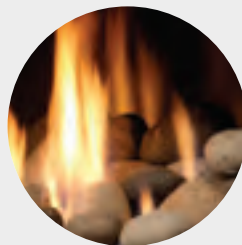
MQEMBER
Ember
Chunks



MQSTONE
Decorative
Stones



MQROCK2
Natural
Rock Set

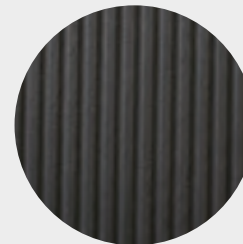


MQROCK3
Multi-Colored
Rock Set



RBCB1
Multi-Colored
Cannonballs

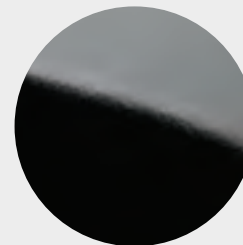
LINERS



Fluted



Stacked Brick



Porcelain
Reflective
Liner



Glass
Reflective
Liner



OUTDOOR LIVING



AURORA

ZERO CLEARANCE OUTDOOR GAS FIREPLACE



Unit Illustrated: OFP42NS Outdoor Fireplace in Stainless Steel – Natural Gas, MQROCK3 Multi-colored – Contemporary Rock Set, MQG5W White Glass decorates the bottom of the fireplace.

LIGHT UP YOUR NIGHTS.

Nights will never be the same with the new **AURORA**. Designed for your outdoor oasis, this fireplace captures your attention with its Satin Coat Black or Stainless Steel Finish and your choice of a contemporary rock collection or log set. Looks like the stars in the sky now have a little competition.

STANDARD FEATURES

- Hi/lo Millivolt valve with variable adjustment of flame and BTU
- A flame sensor that constantly monitors the pilot flame and provides 100% gas shut off if pilot is not sensed
- Stainless steel pull screen
- Lava rock

SCREENED PORCH INSTALLATION GUIDELINES

- Porch Area – 96 sq. ft.
- Ceiling Height – 92"
- A minimum of two walls can be screened but must be open to outside ventilation:
Top of screen height – 78"
Screen Area – 64 sq. ft

Refer to installation manual for additional details of framing specifications and clearances.

OPTIONAL FEATURES

Surround:
Stainless steel

Refractory Liner:
Traditional and Herringbone

Decorative Glass:
Decorative Ember Glass (Glacier Ice, Cobalt Blue, Black, Bronze, White)

Spark Assist:
Battery operated pilot burner ignitor

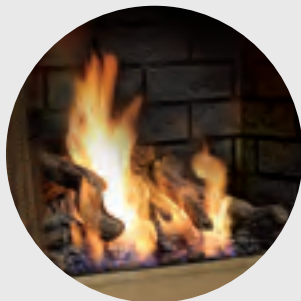
Weather Cover:
Stainless steel or black

Remote Control:
On/Off



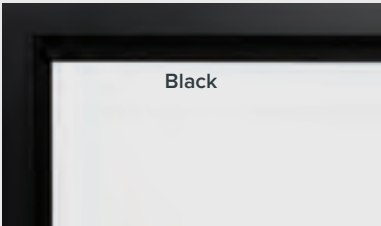
AURORA ACCESSORIES

LOG SET

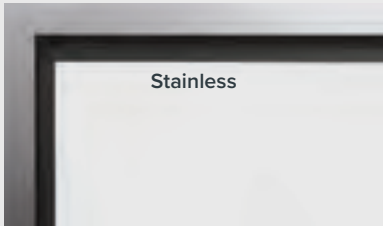


LOGF37
Split Oak Log Set

TRIM

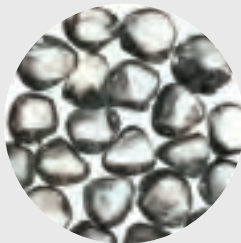


Black

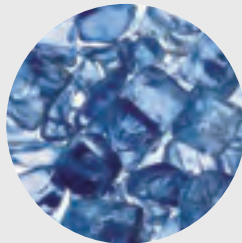


Stainless

MEDIA OPTIONS



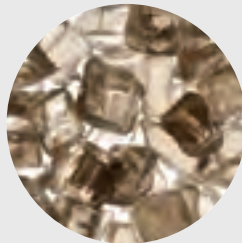
MQG5ZG
Zircon Glacier
Ice Glass



MQG5A
Cobalt
Ember Glass



MQG5B
Black
Ember Glass



MQG5C
Bronze
Ember Glass



MQG5W
White
Ember Glass

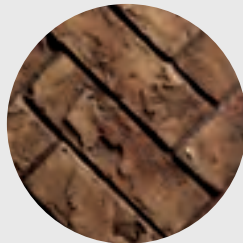


MQROCK2
Natural
Rock Set



MQROCK3
Multi-Colored
Rock Set

LINERS

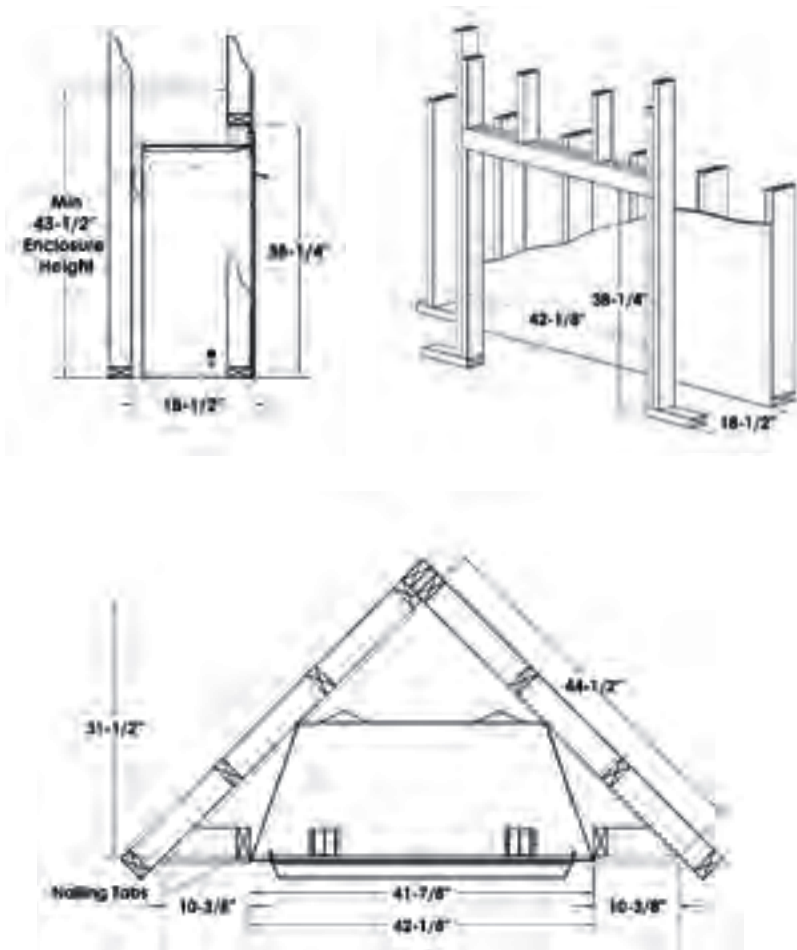


Herringbone
Brick



Traditional
Brick Liner

AURORA PRODUCT DIMENSIONS



AURORA PRODUCT SPECIFICATIONS

MODEL	OFP42N (Black)	OFP42NS (Stainless)	OFP42LP (Black)	OFP42LPS (Stainless)
Fuel	Natural Gas	Natural Gas	Propane	Propane
Input Max.	55,000 BTU	55,000 BTU	55,000 BTU	55,000 BTU
Input Min.	38,000 BTU	38,000 BTU	44,000 BTU	44,000 BTU



Unit Illustrated: MOFP42NS Outdoor Fireplace in Stainless Steel – Natural Gas, LOGF37 Split Oak Log Set, OFP42RLT Traditional Brick Liner.

BOLA

OUTDOOR GAS FIRE BOWL

The outdoor fire bowl can be installed on top of wood decks or patios, 24" clearance to side walls. Allow 7 feet clearance from top of fire bowl to any ceiling.



Unit Illustrated: FP2085LP Outdoor Fire Pit – Propane, FPB30SG Smooth Grey Concrete Fire Bowl.

LIGHT UP THE OUTDOORS.

The **BOLA** is perfect way to enhance the enjoyment of any outdoor space. Ideally suited for use on a wood deck or patio, Bola comes complete with lava rock and is fuelled by either natural gas or propane. Decorate your Bola with your choice of decorative stone, or five different colors of crushed glass media.

Unit Illustrated: FPB2085LP Outdoor Fire Pit (Propane), FPB30SG Smooth Grey Concrete Fire Bowl, MQSTONES Decorative Stones, FPB30TRG Trim Ring (Charcoal).
FPB30TRG Trim Ring: 31 3/4" diameter x 1 1/16" high.

BOLA PRODUCT SPECIFICATIONS

MODEL	FPB30 FP2085N	FPB30 FP2085LP
Fuel	Natural Gas	Propane
Input Max.	65,000 BTU	65,000 BTU
Height	14"	14"
Diameter	30"	30"

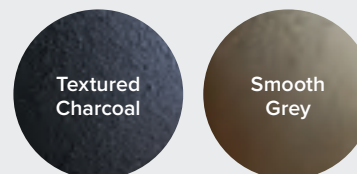
OPTIONAL COVER



FEATURES

- Concrete Fire Bowl available in your choice of Textured Charcoal and Smooth Grey
- Optional Fire Bowl Cover (Black)
- Optional Trim Ring (Charcoal)
- Liquid Propane Fire Pit comes complete with 5 ft. hose and regulator (LP tank not included)

COLOURS



FP2085N Outdoor Fire Pit (Natural Gas), MQSTONES Decorative Stones, FPB30TB Textured Charcoal Fire Bowl.



FP2085N Outdoor Fire Pit (Natural Gas), MQSTONES Decorative Stones.



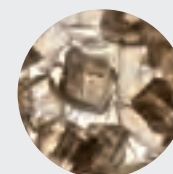
FP2085LP Outdoor Fire Pit (Propane), FPB30TB Textured Charcoal Fire Bowl, MQG10C Reflective Glass (Bronze x4).



FP2085N Outdoor Fire Pit (Natural Gas), FP20SSR Stainless Steel Ring.



MEDIA OPTIONS



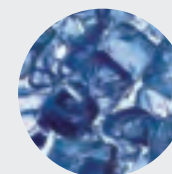
MQG5C Bronze
Ember Glass



MQG5W White
Ember Glass



MQG5ZG Zircon
Glacier Ice Glass



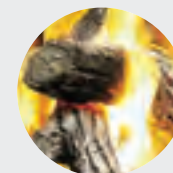
MQG5A Cobalt
Ember Glass



MQG5B Black
Ember Glass



MLR1410
Lava Rock



LOGC85 4-Piece
Oak Log Set



MQSTONE
Decorative Stone

EXTRAORDINARY STYLE. REVOLUTIONARY FLEXIBILITY.

STYLING OPTIONS

FLAME DISPLAYS	6.1
FLAME CHART	6.3
WALL SURROUNDS	6.4
ADDITIONAL OPTIONS	6.5

The **MARQUIS COLLECTION** was created with you in mind. Each fireplace can be customized with our accessories and surrounds to suit your personal style.

For a classic look, you may choose a Herringbone Brick Liner and log set. Going modern? Check out our clean and dramatic Wall Surrounds together with our Contemporary Rock Collection or eye-catching decorative glass. With so many options, you can make a unique statement with every Marquis Fireplace.



STYLING OPTIONS



FLAME DISPLAYS





FLAME CHART

To determine which Flame Display models accommodate your desired fireplace, please refer to the chart below.

		Multi-Colour Rock	Natural Rock	Decorative Ember Glass	Decorative Stones	Contemporary Rock and Driftwood Options	Glass or Rock Support Platform	Multi-Colour Cannonballs	LOG SETS		
MARQUIS COLLECTION MODELS									Oak Log Set	Driftwood Log Set	Birch Log Set
NAME	MODELS										
ATRIUM	MCVP42	•	•	•	•	•	•	•	•	•	
AURORA	OFP42	•	•	•	•				•		
BOLA	FPB30	•	•	•	•				•		
BENTLEY	ZCV39	•	•	•	•	•	•	•	•	•	
	ZCV42	•	•	•	•	•	•	•	•	•	
	MQZCV48	•	•	•	•	•	•	•	•	•	
BENTLEY ST	MCVST42	•	•	•	•	•	•	•	•	•	
CAPELLA	IDV26	•	•	•	•		•		•		
CAPRI	IDV34/44	•	•	•	•		•		•	•	•
COVE	MQZDV3927	•	•	•			•		•		
	MQZDV4634	•	•	•			•		•		
ENCLAVE	MQVL48/60	•	•	•	•	•		•	•	•	•
	MQVLB48/60	•	•	•	•	•		•	•	•	•
GEMINI	MDV31	•	•				•		•		
INFINITE	QMRB4436	•	•	•	•	•		•		•	•
	QMRB5143	•	•	•	•	•		•		•	•
	QMRB6961	•	•	•	•	•		•		•	•
SERENE	ZCVRB47/60	•	•	•	•	•		•		•	•
SKYLINE	ZCVRB3622	•	•	•	•	•		•		•	
	QMRB4236	•	•	•	•	•		•		•	
SOLARA II	ZCV3622	•	•				•		•	•	
SOLACE	MQHBZDV3636	•	•				•		•		
	MQHBZDV4236	•	•				•		•		
	MQHBZDV4736	•	•								
SOLACE II	HBZDV3624	•	•				•		•		
	HBZDV4224	•	•				•		•		
	HBZDV4228	•	•				•		•		

WALL SURROUNDS

SKYLINE



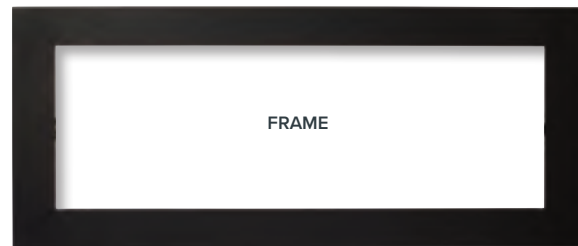
ZCVRB36SWFBL Flatt Surround

SOLARA II

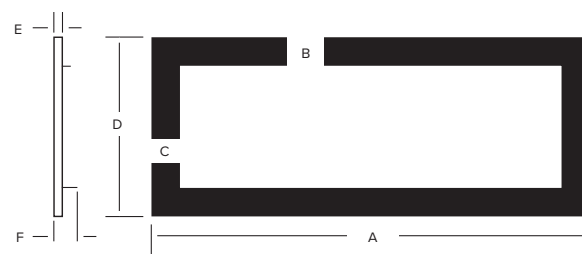
ZCV36SWFBL Flatt Surround



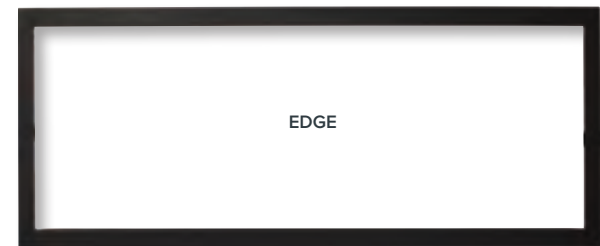
INFINITE, SERENE AND SKYLINE SURROUNDS



BLACK

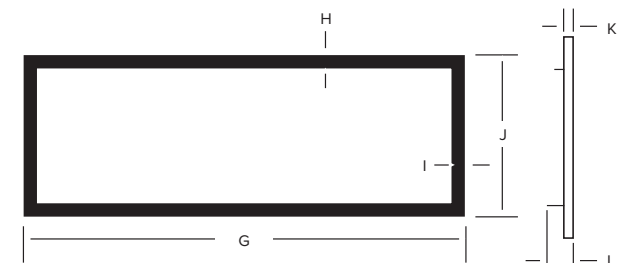


	MQRB4436	MQRB5143	MQRB6961
A	49 7/8"	56 7/8"	74 7/8"
B	3 7/8"	3 7/8"	3 7/8"
C	4 3/8"	4 3/8"	4 3/8"
D	23 3/4"	23 3/4"	23 3/4"
E	1"	1"	1"
F	2 3/8"	2 3/8"	2 3/8"



BLACK

STAINLESS



	MQRB4436	MQRB5143	MQRB6961	ZCVRB47	ZCVRB60	ZCVRB3622
G	44 1/8"	51 1/8"	69 1/8"	44 3/8"	64"	36"
H	1 1/2"	1 1/2"	1 1/2"	1 1/2"	1 1/2"	1 1/2"
I	1 1/2"	1 1/2"	1 1/2"	1 1/2"	1 1/2"	1 1/2"
J	19 1/8"	19 1/8"	19 1/8"	17 3/4"	23"	22 1/2"
K	1"	1"	1"	1"	3/4"	1"
L	2 3/8"	2 3/8"	2 3/8"	1 3/4"	—	—

ADDITIONAL OPTIONS

LINERS



FLUTED



HERRINGBONE
RED BRICK



STACKED
BRICK



TRADITIONAL
BRICK



HERRINGBONE
TRADITIONAL BRICK



PORCELAIN
REFLECTIVE

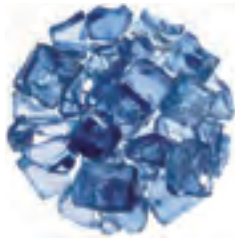


GLASS
REFLECTIVE

DECORATIVE EMBER GLASS



BRONZE 1/2" GLASS
MQG5C



COBALT 1/2" GLASS
MQG5A



WHITE 1/2" GLASS
MQG5W



BLACK 1/2" GLASS
MQG5A



ZIRCON GLACIER ICE
MQG5ZG

REMOTE CONTROLS



PF1/MV



PF2



PF1/MV

DECORATIVE STONE AND ROCK



DECORATIVE
STONES
MQSTONE



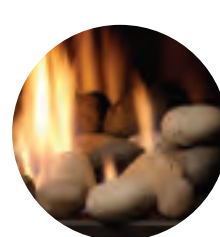
DECORATIVE
STONES
MQSTONE10



MULTI-COLORED
CANNONBALLS
RBCB1



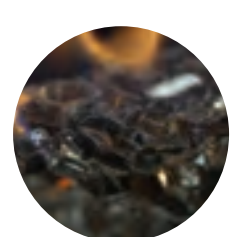
DECORATIVE
ROCK (NATURAL)
MQROCK2



DECORATIVE ROCK
(MULTI-COLORED)
MQROCK3



LAVA
ROCK
MLR1410



EMBER
CHUNKS
MQEMBER

LIMITED LIFETIME WARRANTY

This Limited Lifetime Warranty applies only while the unit remains at the site of the original installation and only if the unit is installed inside the continental United States, Alaska, Hawaii, and Canada. The warranty applies only if the unit is installed and operated in accordance with the printed instructions and in compliance with applicable installation and building codes and good trade practices.

BASIC ONE YEAR WARRANTY

During the first year after installation, we will provide a replacement for any component part of your unit found to be defective in materials or workmanship, including labour costs. Repair work requires prior approval by Kingsman, labour costs are based on a predetermined rate schedule and any repair work must be done through an authorized Kingsman dealer. (Excluded Components: Accent Light Bulbs, Gasketing and Paint.)

LIMITED LIFETIME WARRANTY

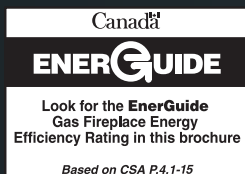
The heat exchanger, combustion chamber and burner of every Kingsman product excluding the Outdoor Firepit are warranted against materials or workmanship during the period the product is owned by the original owner. The part to be replaced must be returned to our distributor in exchange for the replacement part. Any labor, material, freight and/or handling charges associated with any repair or replacement pursuant to this Limited Lifetime Warranty will not be covered by this warranty.

GENERAL TERMS

In lieu of providing a replacement part, we may, at our option, provide the distributor's component purchase price from us or a credit equal to the distributor's component purchase price from us toward the purchase of any new unit which we distribute. If a credit is given in lieu of a replacement part, the rating plate from the unit being replaced must be submitted on a warranty claim, and the unit being replaced must be made available to our distributor for disposition.

In establishing the date of installation for any purpose, including determination of the starting date for the term of this Limited Lifetime Warranty, reasonable proof of the original installation date must be presented*, otherwise the effective date will be based upon the date of manufacture plus thirty (30) days. We will not be responsible for and you, the user, will pay for: (a) damages caused by accident, abuse, negligence, misuse, riot, fire, flood, or Acts of God (b) damages caused by operating the unit where there is a corrosive atmosphere containing chlorine, fluorine, or any other damaging chemicals (other than in a normal residential environment) (c) damages caused by any unauthorized alteration or repair of the unit affecting its stability or performance (d) damages caused by improper matching or application of the unit or the unit's components (e) damages caused by failing to provide proper maintenance and service to the unit (f) any expenses incurred for erecting, disconnecting or dismantling the unit (g) parts or supplies used in connection with service or maintenance (h) damage repairs, inoperation or inefficiency resulting from faulty installation or application (i) electricity or fuel costs or any increase in electricity or fuel cost whatsoever including additional or unusual use of supplemental electric heat.

We shall not be liable for any incidental, consequential, or special damages or expenses in connection with any use or failure of this unit. We have not made and do not make any representation or warranty of fitness for a particular use or purpose, and there is no implied condition of fitness for a particular use or purpose. We make no express warranties except as stated in this Limited Lifetime Warranty. No one is authorized to change this Limited Lifetime Warranty or to create for us any other obligation or liability in connections with this unit. Any implied warranties shall last for one year after the original installation. Some states and provinces do not allow the exclusion or limitation of incidental or consequential damages or do not allow limitations on how long an implied warranty or condition lasts, so the above limitations or exclusions may not apply to you. The provisions of this limited warranty are in additions to and not a modification of or subtraction from any statutory warranties and other rights and remedies provided by law.



Marquis Fireplaces maintains a program of continuous testing, refinement and improvements of all its products. Some aspect of units shown here may be changed at any time without notice or obligation.



Crafted entirely in Canada, each Marquis fireplace is built to the highest standards and made to last.

LIMITED LIFETIME WARRANTY

2340 Logan Avenue
Winnipeg, Manitoba, CAN R2R 2V3
Phone: 204.632.1962 Fax: 204.632.1960
marquisfireplaces.net

Printed in Canada
B072 – 01/2020